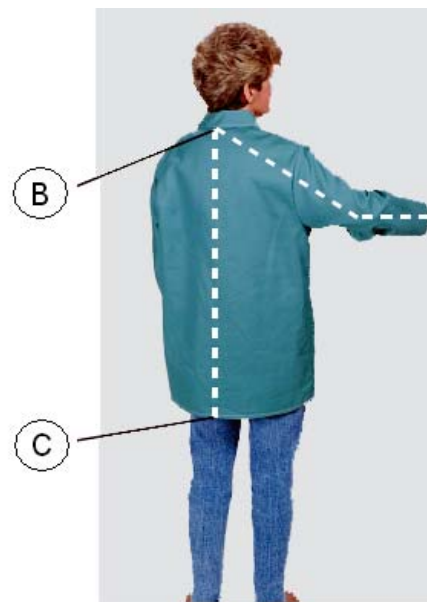


## Guide to a proper fitting garment

The Body Measurement Sizing Guide **must be applied** in conjunction with the **Steel Grip Standard Garment Sizing Charts** (see pages 2 and 3).

1. Always have someone else take measurements.
2. When measuring, keep the tape snug, but not tight.
3. Place the measuring tape exactly on those body portions illustrated in the the photographed example.
4. For actual body chest and waist **measurements falling between two sizes** = order the next largest size.



	<b>Measured Value in inches</b>	
<b>A</b> = Chest Size		Measure around the fullest part of the chest just under the arms and across the shoulder blades.
<b>B</b> = Sleeve Length		With elbow bent, measure from base of neck and back of center, down and around the elbow and continue to the wrist.
<b>C</b> = Coat Length		Measure from base of neck and back at center, down to the desired length.
<b>D</b> = Waist Size		Measure circumference of the narrowest part of trunk below ribs and above the hip bone where top of pants will ride.
<b>E</b> = Inseam Length		Measure along inside of the seam of one leg from crotch point down to heel of shoe.
<b>F</b> = Height		Measure from top of head to heel of leg.
<b>G</b> = Hand Circumference		Measure circumference of hand palm.

SIZE CHART	SECONDARY WORKWEAR									
	SHIRT (MEN'S) (ORDER BY CHEST SIZE & GARMENT LENGTH)									
CHEST SIZE ( Alpha )	SM		MD		LG		XL		2XL	
CHEST SIZE ( A )	36	38	40	42	44	46	48	50	52	54
SLEEVE LENGTH ( B )	31		33		34		35		36	
<i>OPTIONAL LENGTHS</i>										
• Short	- 2" Sleeve Length - 1.5" Tail Length									
• Regular	Per Specifications									
• Long	+ 2" Sleeve Length + 1.5" Tail Length									
• Tall	+ 3" Tail Length Only									
Special Optional Sleeve Lengths	CONTACT PMMI									

SIZE CHART	SECONDARY WORKWEAR									
	PANTS (MEN'S) (ORDER BY WAIST SIZE & INSEAM LENGTH)									
WAIST SIZE ( D )	30	32	34	36	38	40	42	44	46	48
SPECIFY DESIRED INSEAM ( E ) : Inseam Lengths: 28" 30" 32" 34" 36"										
Standard Inseam Length: 32"										

SIZE CHART	SECONDARY WORKWEAR									
	COVERALLS (MEN'S) (ORDER BY CHEST SIZE & OPTIONAL LENGTH)									
CHEST SIZE ( A )	36	38	40	42	44	46	48	50	52	54
SLEEVE LENGTH ( B )	32	32	34	34	35	35	36	36	37	37
STANDARD INSEAM LENGTH ( E )	27	27	28	28	29	29	30	30	31	31
<i>OPTIONAL LENGTHS</i>										
• Short	- 2" Sleeve Length and Inseam - 1.5" Torso									
• Regular	Per Specifications									
• Long	+ 2" Sleeve Length and Inseam + 1.5" Torso									
• Tall	+ 1.5" Torso Length Only									
Standard Inseam Fits 30" - 34" inseam										

SIZE CHART	ArcGear 25 cal/cm <sup>2</sup> and up							
	JACKETS & COATS							
CHEST SIZE ( Alpha )	SM		MD		LG		XL	
CHEST SIZE ( A )	36	38	40	42	44	46	48	50
SLEEVE LENGTH ( B )	31		33		34		35	

**OPTIONAL LENGTHS**

- Garment Length: 35", 50" and 55"

Special Optional Sleeve Lengths	CONTACT PMMI International
---------------------------------	----------------------------

**TO ASSIST YOU IN ORDERING COATS & LEGGINGS**

HEIGHT ( F ) up to 6' 2"	ORDER the 50" Length Coat & Leggings
HEIGHT ( F ) over 6' 2" and up to 6' 5"	ORDER the 55" Length Coat & Leggings
HEIGHT ( F ) over 6' 5"	CONTACT PMMI International

SIZE CHART	ArcGear 25 cal/cm <sup>2</sup> and up							
	OVER PANTS & BIB OVERALLS (ORDER BY WAIST SIZE)							
WAIST SIZE (Alpha)	SM		MD		LG		XL	
WAIST SIZE ( D )	30	32	34	36	38	40	42	44

Standard Inseam Fits 30" - 34" inseam

SPECIFY OPTIONAL INSEAM IF DESIRED

• Short	Fits under 30" inseam
• Long	Fits over 34" inseam

Hand Circumference ( G )	Glove Size
6 ½" - 7 ½"	8
7 ½" - 8 ½"	9
8 ½" - 9 ½"	10
9 ½" - 11"	11
Over 11"	12