

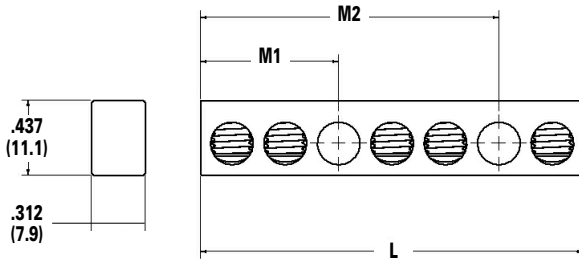
TYPE NBAS

Features

- Manufactured from high strength aluminum alloy
- Electro-tin plated
- Dual rated
- Assemblies available with 2-231 circuits
- UL Recognized and CSA Certified

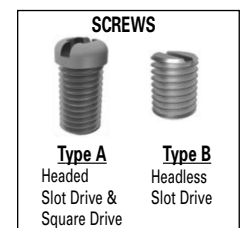
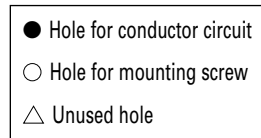
Benefits

- Provides maximum conductivity
- Low contact resistance
- Use with both copper and aluminum conductors
- Application versatility
- Ensures reliability



Catalog Number	Number of Circuits	Mounting Hole Locations ¹ in. (mm)		Screw Type	Configuration	Dimensions in. (mm)	
		M1	M2			L	
NBAS-002-1-A	2	0.492 (12.5)	-	A	●○●	0.984	(25.0)
NBAS-002-1-B	2	0.492 (12.5)	-	B	●○●	0.984	(25.0)
NBAS-003-1-A	3	0.804 (20.4)	-	A	●●○●	1.296	(32.9)
NBAS-003-1-B	3	0.804 (20.4)	-	B	●●○●	1.296	(32.9)
NBAS-004-1-B	4	0.804 (20.4)	-	B	●●○●●	1.608	(40.8)
NBAS-004-2-B	4	0.180 (4.6)	1.740 (44.2)	B	○●●●○	1.920	(48.8)
NBAS-006-1-B	6	1.116 (28.3)	-	B	●●●○●●	2.232	(56.7)
NBAS-008-2-A	8	0.492 (12.5)	2.676 (68.0)	A	●○●●●●●○●	3.168	(80.5)
NBAS-009-2-A	9	0.180 (4.6)	3.300 (83.8)	A	○●●●●●●●○△	3.792	(96.3)
NBAS-010-1-B	10	2.052 (52.1)	-	B	●●●●△○△●●●●	4.104	(104.2)
NBAS-012-1-B	12	2.364 (60.0)	-	B	●●●●△○△●●●●	4.728	(120.1)
NBAS-012-2-A	12	1.116 (28.3)	3.300 (83.8)	A	●●●○●●●●○●●●	4.416	(112.2)
NBAS-013-2-A	13	1.116 (28.3)	3.612 (91.7)	A	●●●○●●●●○●●●	4.728	(120.1)
NBAS-014-1-B	14	2.676 (60.0)	-	B	●●●●●△○△●●●●	5.354	(136.0)
NBAS-192-0-A*	192	-	-	A	● x 192	60.000	(1524.0)
NBAS-192-0-B	192	-	-	B	● x 192	60.000	(1524.0)
NBAS-231-0-A*	231	-	-	A	● x 231	72.000	(1828.8)
NBAS-231-0-B	231	-	-	B	● x 231	72.000	(1828.8)

¹ Mounting holes have a diameter of 0.203 in. (5.2mm)
 All wire sizes, unless noted otherwise, are American Wire Gauge (AWG)
 * Screws are provided unassembled
 Tested to UL 486A/B, UL File E6207 and CSA C22.2 No. 65-03



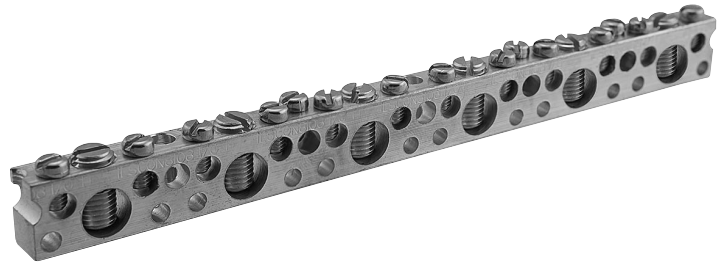
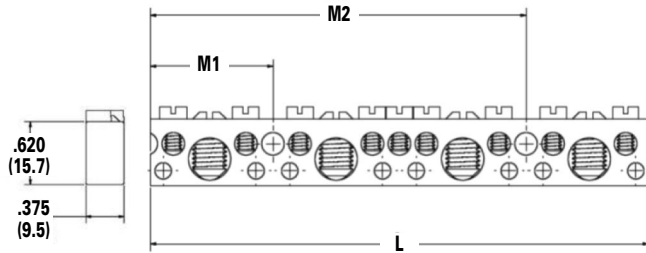
TYPE NBAE

Features

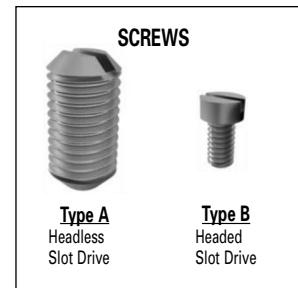
- Manufactured from high strength aluminum alloy
- Electro-tin plated
- Dual rated
- Assemblies available with 6-123 circuits
- UL Recognized and CSA Certified

Benefits

- Provides maximum conductivity
- Low contact resistance
- Use with both copper and aluminum conductors
- Application versatility
- Ensures reliability



Catalog Number	Number of Large Circuits ¹	Number of Small Circuits ²	Mounting Hole Locations ³ in. (mm)				Dimensions in. (mm)	
			M1		M2		L	
NBAE-0204-1	2	4	1.133	(28.8)	-	-	2.265	(57.5)
NBAE-0307-1	3	7	2.305	(58.5)	-	-	3.438	(87.3)
NBAE-0409-2	4	9	1.133	(28.8)	3.477	(88.3)	4.609	(117.1)
NBAE-0410-1	4	10	2.305	(58.5)	-	-	4.609	(117.1)
NBAE-0512-2	5	12	2.305	(58.5)	4.648	(118.1)	5.781	(146.8)
NBAE-0615-2	6	15	3.477	(88.3)	5.821	(147.9)	6.954	(176.6)
NBAE-0924-2	9	24	2.305	(58.5)	9.336	(237.1)	10.468	(265.9)
NBAE-1233-2	12	33	5.820	(147.8)	8.164	(207.4)	13.986	(355.2)
NBAE-3192-0	31	92	-	-	-	-	36.250	(920.8)



¹ Large Circuits have a conductor range of 1/0-14AWG

² Small Circuits have a conductor range of 6-14AWG

³ Mounting holes have a diameter of 0.203 in. (5.2mm)

Catalog Number	Configuration
NBAE-0204-1	★●★○★●★
NBAE-0307-1	★●★●★●★○★●★
NBAE-0409-2	★●★○★●★●★●★○★●★
NBAE-0410-1	★●★●★●★○★●★●★●★
NBAE-0512-2	★●★●★●★○★●★●★●★○★●★
NBAE-0615-2	★●★●★●★●★○★●★●★●★○★●★
NBAE-0924-2	★●★●★●★○★●★●★●★●★●★●★●★●★●★●★●★○★●★
NBAE-1233-2	★●★●★●★●★●★●★●★●★●★○★●★●★●★○★●★●★●★●★●★●★●★
NBAE-3192-0	★●★●★●● ★★●● x 28 ★★●●★

All wire sizes, unless noted otherwise, are American Wire Gauge (AWG)
Tested to UL 486A/B, UL File E6207 and CSA C22.2 No. 65-03

- ★ Hole for small circuit
- Hole for large circuit
- Hole for mounting screw



Copper Neutral Bars

Extended Conductors

Conductor Range: #6-#14 and 1/0-#14

RoHS
Compliant



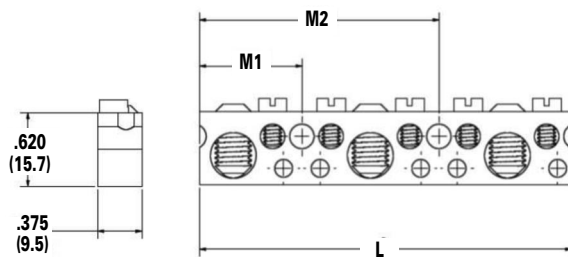
TYPE NBCE

Features

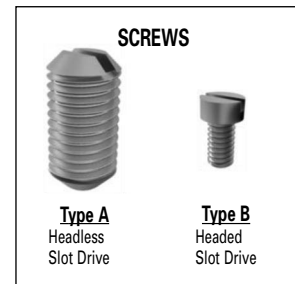
- Manufactured from high strength copper
- Electro-tin plated
- Assemblies available with 8-123 circuits
- UL Recognized and CSA Certified

Benefits

- Provides maximum conductivity
- Low contact resistance
- Application versatility
- Ensures reliability



Catalog Number	Number of Large Circuits ¹	Number of Small Circuits ²	Mounting Hole Locations ³ in. (mm)				Dimensions in. (mm)	
			M1		M2		L	
NBCE-0305-2	3	5	1.133	(28.8)	2.305	(58.5)	3.176	(80.7)
NBCE-0615-2	6	15	3.477	(88.3)	5.821	(147.9)	6.954	(176.6)
NBCE-1336-2	13	36	5.821	(147.9)	8.165	(207.4)	15.158	(385.0)
NBCE-3192-0	31	92	-	-	-	-	36.250	(920.8)



¹ Large Circuits have a conductor range of 1/0-14AWG
² Small Circuits have a conductor range of 6-14AWG
³ Mounting holes have a diameter of 0.203 in. (5.2mm)

Catalog Number	Configuration
NBCE-0305-2	★●★○★●★○★●
NBCE-0615-2	★●★★★●★★★●○★●★★★●★★○●★★
NBCE-1336-2	★●★★★●★★★●★★★●★★★●○★●★★★●★★★●★★★●★★★●★★★●★★★●★★★●★★★●★★★●
NBCE-3192-0	★●★★★● ★★● x 28 ★★●★

All wire sizes, unless noted otherwise, are American Wire Gauge (AWG)
 Tested to UL 486A/B, UL File E6207 and CSA C22.2 No. 65-03

★ Hole for small circuit
 ● Hole for large circuit
 ○ Hole for mounting screw

