

Product Data Sheet



PDH-22-500-X

Replace "X" with 1, 2 or 3 for number of poles

Power Distribution Block

760 Amps, 600 Volts (AC/DC)

1,000V AC/DC CE (IEC 60947-7-1)



Line side: (2) 500 kcmil - #4
Load Side: (2) 500 kcmil - #4

[See tables below for SCCR wire ranges, flexible stranded and multiple wire approvals](#)

Electrical Ratings:

- 760A copper wire, 620A Aluminum wire (Based on NEC Table 310-16, 75°C columns)
- CE Rated Voltage (U_i): 1,000 V AC/DC per IEC 60947-7-1
- Material Group: IIIa
- Pollution Degree: 3
- 600 Volts AC/DC (UL 1059 Class C, User Group - General Industrial)
- Factory and Field Wiring

Short Circuit Current Ratings (Copper wire only):

Wire Class	Suitable Conductors (kcmil/AWG)		Overcurrent Protection Fuse Required Class/Max Amp Rating						SCCR, RMS SYM Amps	Volts Max
	Line	Load	J	T	RK1	RK5	G	CC		
B, C	500 - 4	500 - 4	600	600	400	200	60	30	100,000	600
G, H, I, K	350 - 2	350 - 2	600	600	600	600	60	30	100,000	600

- Short Circuit Current Rating investigated in 16 x 12 x 6 enclosure. Use in smaller enclosure is subject to end-use evaluation.

Mechanical Ratings:

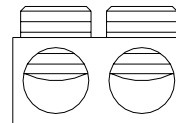
- Maximum insulator base temperature: 150°C (302°F) UL RTI
- Flammability rating of insulator base: UL 94 V-0
- * Use outside these ratings needs to be judged in the end-use application.

Materials:

- Connector: High conductivity aluminum, tin plated
- Insulator base: Phenolic
- Terminal set screws: Aluminum, tin plated
- Connector mounting screws: Steel, zinc plated

Agency Approvals:

- UL Recognized, UL 1059 Terminal Block Standard, File No. E84782
- CSA Certified, CSA C22.2 No. 158, File No. MC 249467 (Wire Classes B & C only)
- CE compliant to IEC 60947-7-1
- RoHS Compliant

Wire Approvals:**Line and Load Side Wire Approvals:**

		Copper Wire Stranding Classes - Number of Strands						
Wire Size	Torque	Solid	Class B	Class C	Class G	Class H	Class I	Class K
500 kcmil	375 in. lbs		37	61				
400	375 in. lbs		37	61	~ 259	~ 427	~ 980	
350	375 in. lbs		37	61	~ 259	~ 427	~ 882	~ 3458
300	375 in. lbs		37	61	~ 259	~ 427	~ 735	~ 2989
250	375 in. lbs		37	61	~ 259	~ 427	~ 637	~ 2499
4/0	375 in. lbs		19	37	~ 133	~ 259	~ 532	~ 2107
3/0	375 in. lbs		19	37	~ 133	~ 259	~ 418	~ 1666
2/0	375 in. lbs		19	37	~ 133	~ 259	~ 342	~ 1323
1/0	375 in. lbs		19	37	~ 133	~ 259	~ 266	~ 1064
1	375 in. lbs		19	37	~ 133	~ 259	~ 210	~ 836
2	375 in. lbs		7	19	~ 49	~ 133	~ 161	~ 665
4	375 in. lbs		7	19				

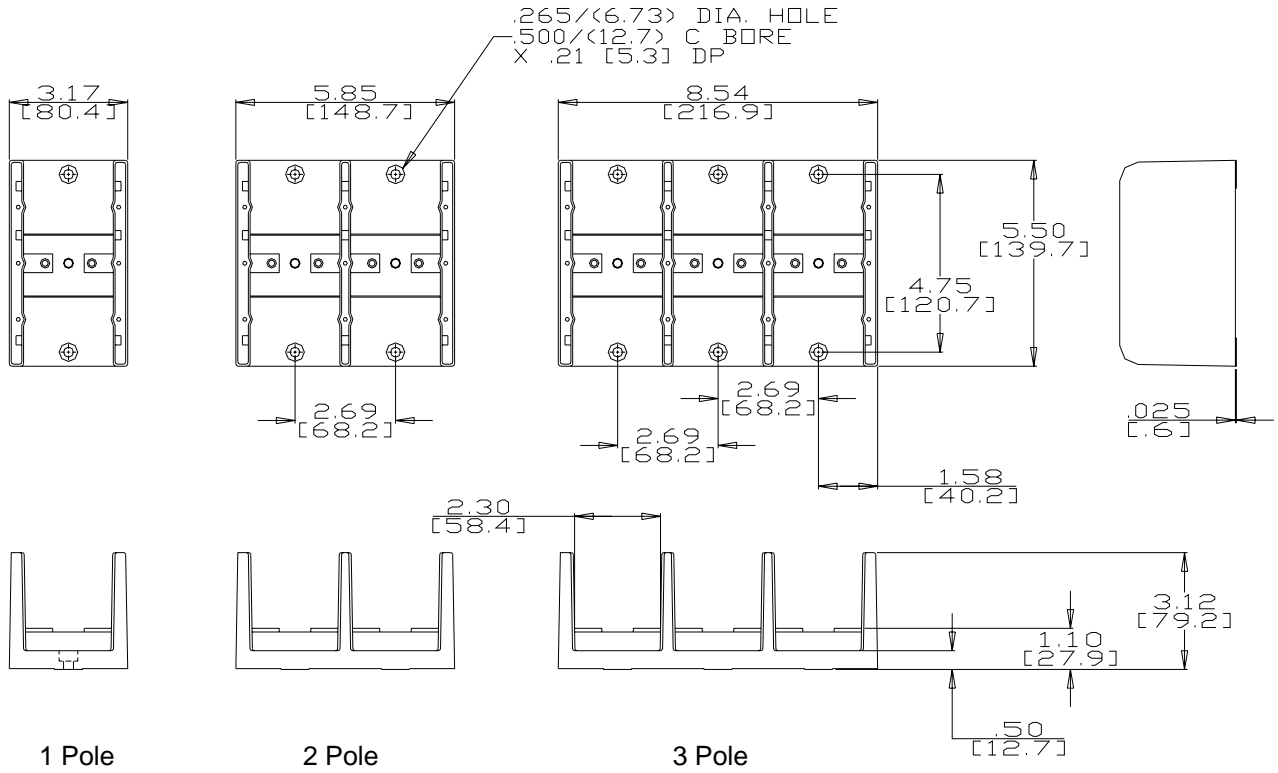
~Quantity of strands for Classes G, H, I, K may vary by manufacturer.

Aluminum stranded wire range: 500 kcmil – #4 AWG

- Wire strip length, line and load side taps – 1 3/8”
- Hex key required: 3/8”
- Panel mountable: 1/4” (M6) fastener, torque to 30 - 40 in. lbs.

Accessories:

- Clear cover (screws provided): C-6-X (replace X with 1, 2, or 3 for no. of poles)



WWW.ILSCO.COM
1-800-776-9775