

Product Data Sheet



PDH-28-500-X

Replace "X" with 1, 2 or 3 for number of poles

Power Distribution Block
760 Amps, 600 Volts (AC/DC)
1,000V AC/DC CE (IEC 60947-7-1)



Wire Range:

Line side: (2) 500 kcmil - #6
 Load Side: (8) 2/0 - #14 AWG

Electrical Ratings:

- 760A copper wire, 620A Aluminum wire (Based on NEC Table 310-16, 75°C columns)
- CE Rated Voltage (U_i): 1,000 V AC/DC per IEC 60947-7-1
- Material Group: IIIa
- Pollution Degree: 3
- 600 Volts AC/DC (UL 1059 Class C, User Group - General Industrial)
- Factory and Field Wiring

Short Circuit Current Ratings (Copper wire only):

| Wire Class | Suitable Conductors (kcmil/AWG) | | Overcurrent Protection Fuse Required Class/Max Amp Rating | | | | | | SCCR, RMS SYM Amps | Volts Max |
|------------|---------------------------------|----------|---|-----|-----|-----|----|----|--------------------|-----------|
| | Line | Load | J | T | RK1 | RK5 | G | CC | | |
| B, C | 500 - 250 | 2/0 - 4 | 600 | 600 | 400 | 200 | 60 | 30 | 100,000 | 600 |
| B, C | 4/0 - 4 | 2/0 - 10 | 400 | 400 | 400 | 200 | 60 | 30 | 100,000 | 600 |
| B, C | 4/0 - 4 | 2/0 - 10 | 600 | 600 | - | - | - | - | 50,000 | 600 |
| G, H, I, K | 350 - 2 | 1 - 14 | 600 | 600 | 600 | 200 | 60 | 30 | 100,000 | 600 |

• Short Circuit Current Rating investigated in 16 x 12 x 6 enclosure. Use in smaller enclosure is subject to end-use evaluation.

Mechanical Ratings:

- Maximum insulator base temperature: 150°C (302°F) UL RTI
- Flammability rating of insulator base: UL 94 V-0
- * Use outside these ratings needs to be judged in the end-use application.

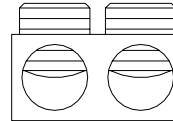
Materials:

- Connector: High conductivity aluminum, tin plated
- Insulator base: Phenolic
- Terminal set screws: Aluminum, tin plated
- Connector mounting screws: Steel, zinc plated

Agency Approvals:

- UL Recognized, UL 1059 Terminal Block Standard, File No. E84782
- CSA Certified, CSA C22.2 No. 158, File No. MC 249467 (Wire Classes B & C only)
- CE compliant to IEC 60947-7-1
- RoHS Compliant

Wire Approvals:

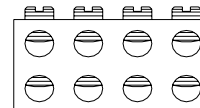


Line Side Wire Approvals:

| Copper Wire Stranding Classes - Number of Strands | | | | | | | | |
|---|-------------|-------|---------|---------|---------|---------|---------|---------|
| Wire Size | Torque | Solid | Class B | Class C | Class G | Class H | Class I | Class K |
| 500 kcmil | 375 in. lbs | | 37 | 61 | | | | |
| 400 | 375 in. lbs | | 37 | 61 | ~ 259 | ~ 427 | ~ 980 | |
| 350 | 375 in. lbs | | 37 | 61 | ~ 259 | ~ 427 | ~ 882 | ~ 3458 |
| 300 | 375 in. lbs | | 37 | 61 | ~ 259 | ~ 427 | ~ 735 | ~ 2989 |
| 250 | 375 in. lbs | | 37 | 61 | ~ 259 | ~ 427 | ~ 637 | ~ 2499 |
| 4/0 | 375 in. lbs | | 19 | 37 | ~ 133 | ~ 259 | ~ 532 | ~ 2107 |
| 3/0 | 375 in. lbs | | 19 | 37 | ~ 133 | ~ 259 | ~ 418 | ~ 1666 |
| 2/0 | 375 in. lbs | | 19 | 37 | ~ 133 | ~ 259 | ~ 342 | ~ 1323 |
| 1/0 | 375 in. lbs | | 19 | 37 | ~ 133 | ~ 259 | ~ 266 | ~ 1064 |
| 1 | 375 in. lbs | | 19 | 37 | ~ 133 | ~ 259 | ~ 210 | ~ 836 |
| 2 | 375 in. lbs | | 7 | 19 | ~ 49 | ~ 133 | ~ 161 | ~ 665 |
| 4 | 375 in. lbs | | 7 | 19 | | | | |
| 6 | 375 in. lbs | | 7 | 19 | | | | |

~Quantity of strands for Classes G, H, I, K may vary by manufacturer.

Aluminum stranded wire range: 500 kcmil – #6 AWG



Load Side Wire Approvals:

| Copper Wire Stranding Classes - Number of Strands | | | | | | | | |
|---|-------------|-------|---------|---------|---------|---------|---------|---------|
| Wire Size | Torque | Solid | Class B | Class C | Class G | Class H | Class I | Class K |
| 2/0 AWG | 120 in. lbs | | 19 | 37 | | | | |
| 1/0 | 120 in. lbs | | 19 | 37 | | | | |
| 1 | 120 in. lbs | | 19 | 37 | ~ 133 | ~ 259 | ~ 210 | ~ 836 |
| 2 | 120 in. lbs | | 7 | 19 | ~ 49 | ~ 133 | ~ 161 | ~ 665 |
| 4 | 120 in. lbs | | 7 | 19 | ~ 49 | ~ 133 | ~ 105 | ~ 420 |
| 6 | 120 in. lbs | | 7 | 19 | ~ 49 | ~ 133 | ~ 63 | ~ 266 |
| 8 | 40 in. lbs | | 7 | 19 | ~ 49 | ~ 133 | ~ 41 | ~ 168 |
| 10 | 35 in. lbs | 1 | 7 | 19 | | | ~ 27 | ~ 104 |
| 12 | 35 in. lbs | 1 | 7 | 19 | | | ~ 19 | ~ 65 |
| 14 | 35 in. lbs | 1 | 7 | 19 | | | ~ 19 | ~ 41 |

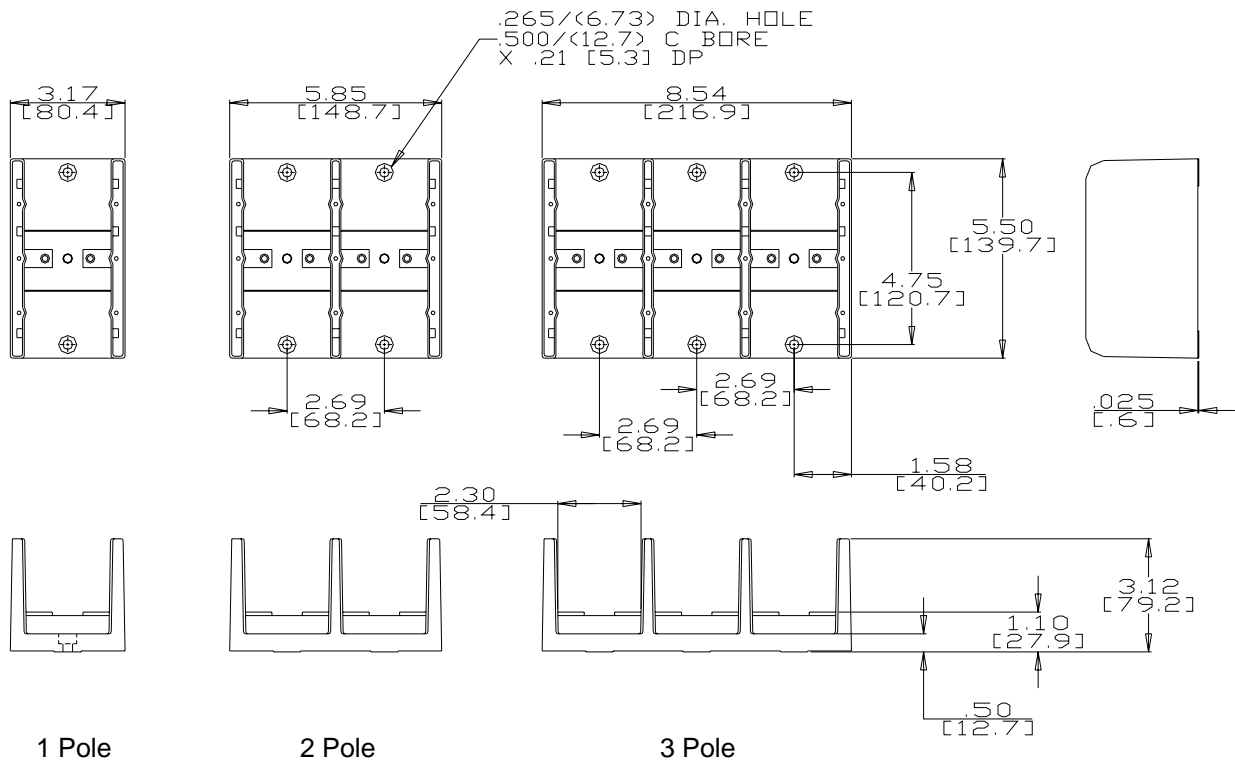
~Quantity of strands for Classes G, H, I, K may vary by manufacturer.

Aluminum stranded wire range: 2/0 – #12 AWG

- Wire strip length, line side tap – 1 5/16"
- Wire strip length, load side taps, top holes – 3/4", bottom holes - 1 5/16"
- Hex keys required: line side - 3/8", load side – 5/16"
- Panel mountable: 1/4" (M6) fastener, torque to 30 - 40 in. lbs.

Accessories:

- Clear cover (screws provided): C-6-X (replace X with 1, 2, or 3 for no. of poles)



WWW.ILSCO.COM
1-800-776-9775