



SURECRIMP™ CATALOG SUPPLEMENT

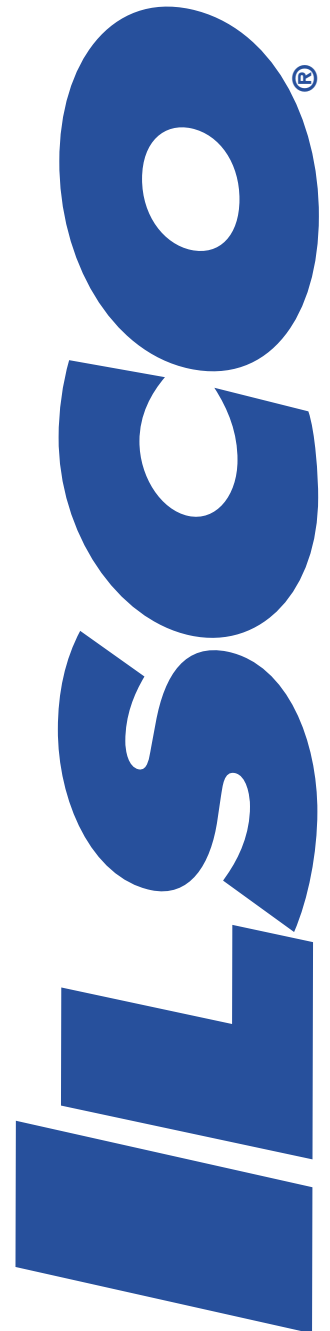


Table of Contents



ILSCO Catalog Numbering System 1

CSWS 2 - 4

CSWD 5 - 10

CLWS 11 - 13

CLNS 14 - 16

CLWD 17 - 22

CLND 23 - 28

CLNF 29 - 30

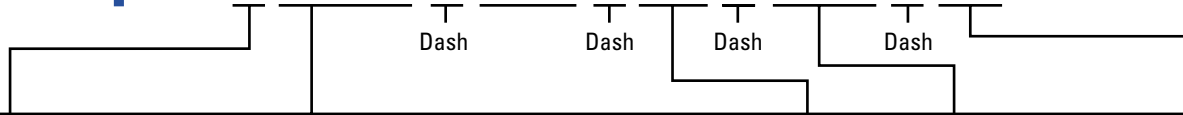
CT 31

CTL 32

Compression Dies 33

Tooling Information 34 - 39

Example: CLWD - 500 - 12 - 134

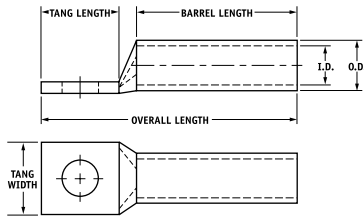


Material	Configuration	Wire Size	Bolt Size	Bolt Hole Spacing (If applicable)	Options
C = Copper	LNS = Long Barrel w/o Sight, 1-H LND = Long Barrel w/o Sight, 2-H LWS = Long Barrel w/Sight, 1-H LWD = Long Barrel w/Sight, 2-H SNS = Short Barrel w/o Sight, 1-H SND = Short Barrel w/o Sight, 2-H SWS = Short Barrel w/Sight, 1-H SWD = Short Barrel w/Sight, 2-H LNF = Long Barrel w/o Sight, Flared End LWF = Long Barrel w/Sight, Flared End LNB = Long Barrel w/o Sight, Bent-Tang LWB = Long Barrel w/Sight, Bent-Tang SNB = Short Barrel w/o Sight, Bent-Tang SWB = Short Barrel w/Sight, Bent-Tang	8 = 8 AWG 6 = 6 AWG 4 = 4 AWG 3 = 3 AWG 2 = 2 AWG 1 = 1 AWG 1/0 = 1/0 AWG 2/0 = 2/0 AWG 3/0 = 3/0 AWG 4/0 = 4/0 AWG 250 = 250 kcmil 300 = 300 kcmil 350 = 350 kcmil 400 = 400 kcmil 500 = 500 kcmil 550 = 550 kcmil 700 = 700 kcmil 750 = 750 kcmil 1000 = 1000 kcmil	06 = #6 08 = #8 10 = #10 14 = 1/4" 516 = 5/16" 38 = 3/8" 12 = 1/2" 58 = 5/8" 34 = 3/4" 78 = 7/8" 1 = 1"	Blank = 1 Hole 12 = 1/2" 58 = 5/8" 1116 = 11/16" 34 = 3/4" 78 = 7/8" 1 = 1" 116 = 1-1/16" 118 = 1-1/8" 114 = 1-1/4" 112 = 1-1/2" 134 = 1-3/4" 178 = 1-7/8" 2 = 2"	Blank = (Sn) Tin Plated Straight Tang A = (Ag) Silver Plated 4 = 45 Degree Bent-Tang 9 = 90 Degree Bent-Tang U = Undrilled X(###) = Special

TYPE CSWS

Features

- Manufactured from high strength seamless copper tubing.
- Electro-Tin plated.
- Maximum conductivity and excellent crimping characteristics.
- Chamfered entry.
- Color coded.
- UL 486A 90°C Listed and CSA Certified for 600 Volts.
- If proper high voltage spacing and insulation techniques are used, may be used for high voltage applications up to 35KV.
- For Copper conductor only.
- IlSCO connectors are UL Listed and CSA Certified with ILSCO or other Manufacturers' tools.
- UL File E6207



Catalog Number	Wire Size	Alt Wire Size	Expanded* Wire Range	Bolt Size	Stud Hole Dia.	Tang Length	Tang Width	Barrel Length	Overall Length	Die Color Code	Die Index	Die Catalog Number	O.D.	I.D.
CSWS-8-10	#8 AWG	#8 FLEX	-	10	0.219	0.562	0.374	0.500	1.257	Red	I-21	ILD-21	0.272	0.179
+ CSWS-8-14	#8 AWG	#8 FLEX	-	1/4	0.281	0.680	0.486	0.500	1.375	Red	I-21	ILD-21	0.272	0.179
+ CSWS-8-516	#8 AWG	#8 FLEX	-	5/16	0.343	0.875	0.532	0.500	1.570	Red	I-21	ILD-21	0.272	0.179
+ CSWS-8-38	#8 AWG	#8 FLEX	-	3/8	0.406	0.875	0.593	0.500	1.570	Red	I-21	ILD-21	0.272	0.179
CSWS-6-10	#6 AWG	-	-	10	0.219	0.562	0.411	0.500	1.257	Blue	I-24	ILD-24	0.295	0.203
CSWS-6-14	#6 AWG	-	-	1/4	0.281	0.680	0.411	0.500	1.375	Blue	I-24	ILD-24	0.295	0.203
+ CSWS-6-516	#6 AWG	-	-	5/16	0.343	0.875	0.532	0.500	1.570	Blue	I-24	ILD-24	0.295	0.203
+ CSWS-6-38	#6 AWG	-	-	3/8	0.406	0.875	0.593	0.500	1.570	Blue	I-24	ILD-24	0.295	0.203
+ CSWS-6-12	#6 AWG	-	-	1/2	0.562	1.250	0.750	0.500	1.945	Blue	I-24	ILD-24	0.295	0.203
+ CSWS-6-34	#6 AWG	-	-	3/4	0.781	1.687	0.411	0.500	2.382	Blue	I-24	ILD-24	0.295	0.203
CSWS-4-10	#4 AWG	#6 FLEX	4-6 AWG	10	0.219	0.562	0.486	0.500	1.296	Gray	I-29	ILD-29	0.343	0.250
CSWS-4-14	#4 AWG	#6 FLEX	4-6 AWG	1/4	0.281	0.680	0.486	0.500	1.414	Gray	I-29	ILD-29	0.343	0.250
CSWS-4-516	#4 AWG	#6 FLEX	4-6 AWG	5/16	0.343	0.875	0.486	0.500	1.609	Gray	I-29	ILD-29	0.343	0.250
+ CSWS-4-38	#4 AWG	#6 FLEX	4-6 AWG	3/8	0.406	0.875	0.593	0.500	1.609	Gray	I-29	ILD-29	0.343	0.250
+ CSWS-4-12	#4 AWG	#6 FLEX	4-6 AWG	1/2	0.562	1.250	0.750	0.500	1.984	Gray	I-29	ILD-29	0.343	0.250
CSWS-3-10	#3 AWG	#4 FLEX	3-6 AWG	10	0.219	0.562	0.532	0.625	1.442	White	I-29	ILD-29	0.375	0.275
CSWS-3-14	#3 AWG	#4 FLEX	3-6 AWG	1/4	0.281	0.680	0.532	0.625	1.560	White	I-29	ILD-29	0.375	0.275
CSWS-3-516	#3 AWG	#4 FLEX	3-6 AWG	5/16	0.343	0.875	0.532	0.625	1.755	White	I-29	ILD-29	0.375	0.275
+ CSWS-3-38	#3 AWG	#4 FLEX	3-6 AWG	3/8	0.406	0.875	0.593	0.625	1.755	White	I-29	ILD-29	0.375	0.275
+ CSWS-3-12	#3 AWG	#4 FLEX	3-6 AWG	1/2	0.562	1.250	0.750	0.625	2.130	White	I-29	ILD-29	0.375	0.275
CSWS-2-10	#2 AWG	-	2-6 AWG	10	0.219	0.562	0.599	0.625	1.473	Brown	I-33	ILD-33	0.421	0.312
CSWS-2-14	#2 AWG	-	2-6 AWG	1/4	0.281	0.680	0.599	0.625	1.591	Brown	I-33	ILD-33	0.421	0.312
CSWS-2-516	#2 AWG	-	2-6 AWG	5/16	0.343	0.875	0.599	0.625	1.786	Brown	I-33	ILD-33	0.421	0.312
CSWS-2-38	#2 AWG	-	2-6 AWG	3/8	0.406	0.875	0.599	0.625	1.786	Brown	I-33	ILD-33	0.421	0.312
+ CSWS-2-12	#2 AWG	-	2-6 AWG	1/2	0.562	1.250	0.750	0.625	2.161	Brown	I-33	ILD-33	0.421	0.312

+ Available 3rd quarter 2008

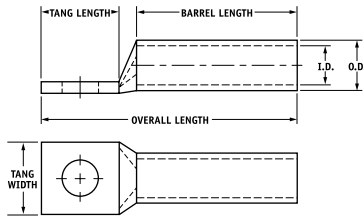
* When installed with specified dieless tools

See pages 34 to 39 for complete tooling information.

TYPE CSWS

Features

- Manufactured from high strength seamless copper tubing.
- Electro-Tin plated.
- Maximum conductivity and excellent crimping characteristics.
- Chamfered entry.
- Color coded.
- UL 486A 90°C Listed and CSA Certified for 600 Volts.
- If proper high voltage spacing and insulation techniques are used, may be used for high voltage applications up to 35KV.
- For Copper conductor only.
- IlSCO connectors are UL Listed and CSA Certified with ILSCO or other Manufacturers' tools.
- UL File E6207



Catalog Number	Wire Size	Alt Wire Size	Expanded* Wire Range	Bolt Size	Stud Hole Dia.	Tang Length	Tang Width	Barrel Length	Overall Length	Die Color Code	Die Index	Die Catalog Number	O.D.	I.D.
CSWS-1-10	#1 AWG	#2 FLEX	1-6 AWG	10	0.219	0.562	0.673	0.625	1.517	Green	I-37	ILD-37	0.468	0.359
CSWS-1-14	#1 AWG	#2 FLEX	1-6 AWG	1/4	0.281	0.875	0.673	0.625	1.830	Green	I-37	ILD-37	0.468	0.359
CSWS-1-516	#1 AWG	#2 FLEX	1-6 AWG	5/16	0.343	0.875	0.673	0.625	1.830	Green	I-37	ILD-37	0.468	0.359
CSWS-1-38	#1 AWG	#2 FLEX	1-6 AWG	3/8	0.406	0.875	0.673	0.625	1.830	Green	I-37	ILD-37	0.468	0.359
+ CSWS-1-12	#1 AWG	#2 FLEX	1-6 AWG	1/2	0.562	1.250	0.750	0.625	2.205	Green	I-37	ILD-37	0.468	0.359
CSWS-1/0-10	1/0 AWG	#1 FLEX	1/0-6 AWG	10	0.219	0.562	0.738	0.750	1.668	Pink	I-42	ILD-42	0.515	0.390
CSWS-1/0-14	1/0 AWG	#1 FLEX	1/0-6 AWG	1/4	0.281	0.875	0.738	0.750	1.981	Pink	I-42	ILD-42	0.515	0.390
CSWS-1/0-516	1/0 AWG	#1 FLEX	1/0-6 AWG	5/16	0.343	0.875	0.738	0.750	1.981	Pink	I-42	ILD-42	0.515	0.390
CSWS-1/0-38	1/0 AWG	#1 FLEX	1/0-6 AWG	3/8	0.406	0.875	0.738	0.750	1.981	Pink	I-42	ILD-42	0.515	0.390
CSWS-1/0-12	1/0 AWG	#1 FLEX	1/0-6 AWG	1/2	0.562	1.250	0.738	0.750	2.356	Pink	I-42	ILD-42	0.515	0.390
CSWS-2/0-10	2/0 AWG	1/0 FLEX	2/0-4 AWG	10	0.219	0.562	0.811	0.750	1.708	Black	I-45	ILD-45	0.562	0.437
CSWS-2/0-14	2/0 AWG	1/0 FLEX	2/0-4 AWG	1/4	0.281	0.875	0.811	0.750	2.021	Black	I-45	ILD-45	0.562	0.437
CSWS-2/0-516	2/0 AWG	1/0 FLEX	2/0-4 AWG	5/16	0.343	0.875	0.811	0.750	2.021	Black	I-45	ILD-45	0.562	0.437
CSWS-2/0-38	2/0 AWG	1/0 FLEX	2/0-4 AWG	3/8	0.406	0.875	0.811	0.750	2.021	Black	I-45	ILD-45	0.562	0.437
CSWS-2/0-12	2/0 AWG	1/0 FLEX	2/0-4 AWG	1/2	0.562	1.250	0.811	0.750	2.396	Black	I-45	ILD-45	0.562	0.437
CSWS-3/0-10	3/0 AWG	2/0 FLEX	3/0-2 AWG	10	0.219	0.562	0.885	0.750	1.751	Orange	I-50	ILD-50	0.609	0.484
CSWS-3/0-14	3/0 AWG	2/0 FLEX	3/0-2 AWG	1/4	0.281	0.875	0.885	0.750	2.064	Orange	I-50	ILD-50	0.609	0.484
CSWS-3/0-516	3/0 AWG	2/0 FLEX	3/0-2 AWG	5/16	0.343	0.875	0.885	0.750	2.064	Orange	I-50	ILD-50	0.609	0.484
CSWS-3/0-38	3/0 AWG	2/0 FLEX	3/0-2 AWG	3/8	0.406	0.875	0.885	0.750	2.064	Orange	I-50	ILD-50	0.609	0.484
CSWS-3/0-12	3/0 AWG	2/0 FLEX	3/0-2 AWG	1/2	0.562	1.250	0.885	0.750	2.439	Orange	I-50	ILD-50	0.609	0.484
CSWS-4/0-14	4/0 AWG	3/0 FLEX	4/0-1 AWG	1/4	0.281	0.875	0.999	0.875	2.241	Purple	I-54	ILD-54	0.687	0.546
CSWS-4/0-516	4/0 AWG	3/0 FLEX	4/0-1 AWG	5/16	0.343	0.875	0.999	0.875	2.241	Purple	I-54	ILD-54	0.687	0.546
CSWS-4/0-38	4/0 AWG	3/0 FLEX	4/0-1 AWG	3/8	0.406	0.875	0.999	0.875	2.241	Purple	I-54	ILD-54	0.687	0.546
CSWS-4/0-12	4/0 AWG	3/0 FLEX	4/0-1 AWG	1/2	0.562	1.250	0.999	0.875	2.616	Purple	I-54	ILD-54	0.687	0.546
CSWS-250-516	250kcmil	4/0 FLEX	250kcmil - 1/0 AWG	5/16	0.343	0.875	1.088	1.063	2.469	Yellow	I-62	ILD-62	0.750	0.593
CSWS-250-38	250kcmil	4/0 FLEX	250kcmil - 1/0 AWG	3/8	0.406	0.875	1.088	1.063	2.469	Yellow	I-62	ILD-62	0.750	0.593
CSWS-250-12	250kcmil	4/0 FLEX	250kcmil - 1/0 AWG	1/2	0.562	1.250	1.088	1.063	2.844	Yellow	I-62	ILD-62	0.750	0.593
CSWS-300-516	300kcmil	250 G,H FLEX	300kcmil - 2/0 AWG	5/16	0.343	0.875	1.189	1.063	2.525	White	I-66	ILD-66	0.812	0.660
CSWS-300-38	300kcmil	250 G,H FLEX	300kcmil - 2/0 AWG	3/8	0.406	0.875	1.189	1.063	2.525	White	I-66	ILD-66	0.812	0.660
CSWS-300-12	300kcmil	250 G,H FLEX	300kcmil - 2/0 AWG	1/2	0.562	1.250	1.189	1.063	2.900	White	I-66	ILD-66	0.812	0.660
CSWS-300-58	300kcmil	250 G,H FLEX	300kcmil - 2/0 AWG	5/8	0.656	1.437	1.189	1.063	3.087	White	I-66	ILD-66	0.812	0.660

+ Available 3rd quarter 2008

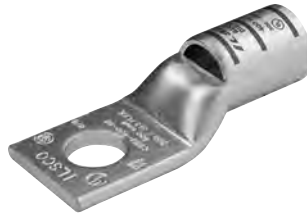
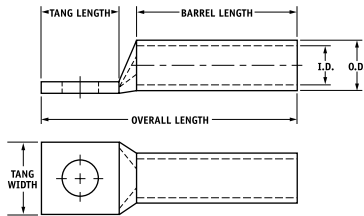
* When installed with specified dieless tools

See pages 34 to 39 for complete tooling information.

TYPE CSWS

Features

- Manufactured from high strength seamless copper tubing.
- Electro-Tin plated.
- Maximum conductivity and excellent crimping characteristics.
- Chamfered entry.
- Color coded.
- UL 486A 90°C Listed and CSA Certified for 600 Volts.
- If proper high voltage spacing and insulation techniques are used, may be used for high voltage applications up to 35KV.
- For Copper conductor only.
- IlSCO connectors are UL Listed and CSA Certified with ILSCO or other Manufacturers' tools.
- UL File E6207



Catalog Number	Wire Size	Alt Wire Size	Expanded* Wire Range	Bolt Size	Stud Hole Dia.	Tang Length	Tang Width	Barrel Length	Overall Length	Die Color Code	Die Index	Die Catalog Number	O.D.	I.D.
CSWS-350-38	350kcmil	250 I,K,M FLEX 262.2 DLO	350kcmil - 3/0 AWG	3/8	0.406	0.875	1.291	1.063	2.561	Red	I-71	ILD-71	0.890	0.703
CSWS-350-12	350kcmil	250 I,K,M FLEX 262.2 DLO	350kcmil - 3/0 AWG	1/2	0.562	1.250	1.291	1.063	2.936	Red	I-71	ILD-71	0.890	0.703
CSWS-350-58	350kcmil	250 I,K,M FLEX 262.2 DLO	350kcmil - 3/0 AWG	5/8	0.656	1.437	1.291	1.063	3.123	Red	I-71	ILD-71	0.890	0.703
CSWS-400-38	400kcmil	300 G,H,I,K,M FLEX 313.1 DLO	400kcmil - 4/0 AWG	3/8	0.406	0.875	1.365	1.188	2.730	Blue	I-76	ILD-76	0.937	0.750
CSWS-400-12	400kcmil	300 G,H,I,K,M FLEX 313.1 DLO	400kcmil - 4/0 AWG	1/2	0.562	1.250	1.365	1.188	3.105	Blue	I-76	ILD-76	0.937	0.750
CSWS-400-58	400kcmil	300 G,H,I,K,M FLEX 313.1 DLO	400kcmil - 4/0 AWG	5/8	0.656	1.437	1.365	1.188	3.292	Blue	I-76	ILD-76	0.937	0.750
CSWS-500-12	500kcmil	350 G,H,I,K,M FLEX 373.7 DLO	500kcmil - 250kcmil	1/2	0.562	1.250	1.535	1.300	3.282	Brown	I-87	ILD-87	1.062	0.828
CSWS-500-38	500kcmil	350 G,H,I,K,M FLEX 373.7 DLO	500kcmil - 250kcmil	3/8	0.406	0.875	1.535	1.300	2.907	Brown	I-87	ILD-87	1.062	0.828
CSWS-500-58	500kcmil	350 G,H,I,K,M FLEX 373.7 DLO	500kcmil - 250kcmil	5/8	0.656	1.437	1.535	1.300	3.469	Brown	I-87	ILD-87	1.062	0.828
CSWS-600-38	600kcmil	400 G,H,I,K,M FLEX 444.4 DLO	600kcmil - 250kcmil	3/8	0.406	0.875	1.712	1.375	3.059	Green	I-94	ILD-94	1.187	0.920
CSWS-600-12	600kcmil	400 G,H,I,K,M FLEX 444.4 DLO	600kcmil - 250kcmil	1/2	0.562	1.250	1.712	1.375	3.434	Green	I-94	ILD-94	1.187	0.920
CSWS-600-58	600kcmil	400 G,H,I,K,M FLEX 444.4 DLO	600kcmil - 250kcmil	5/8	0.656	1.437	1.712	1.375	3.621	Green	I-94	ILD-94	1.187	0.920
CSWS-700-38	700kcmil	500 G,H,I,K,M FLEX 535.3 DLO	700kcmil - 350kcmil	3/8	0.406	0.875	1.816	1.375	3.119	Pink	I-99	ILD-99	1.250	0.991
CSWS-700-12	700kcmil	500 G,H,I,K,M FLEX 535.3 DLO	700kcmil - 350kcmil	1/2	0.562	1.250	1.816	1.375	3.494	Pink	I-99	ILD-99	1.250	0.991
CSWS-700-58	700kcmil	500 G,H,I,K,M FLEX 535.3 DLO	700kcmil - 350kcmil	5/8	0.656	1.437	1.816	1.375	3.681	Pink	I-99	ILD-99	1.250	0.991
CSWS-750-38	750kcmil	600 G,H,I,K,M FLEX 646.4 DLO	750 kcmil - 500kcmil	3/8	0.406	0.875	1.901	1.500	3.277	Black	I-106	ILD-106	1.313	1.031
CSWS-750-12	750kcmil	600 G,H,I,K,M FLEX 646.4 DLO	750kcmil - 500kcmil	1/2	0.562	1.250	1.901	1.500	3.652	Black	I-106	ILD-106	1.313	1.031
CSWS-750-58	750kcmil	600 G,H,I,K,M FLEX 646.4 DLO	750kcmil - 500kcmil	5/8	0.656	1.437	1.901	1.500	3.839	Black	I-106	ILD-106	1.313	1.031
CSWS-1000-38	1000kcmil	750 G,H,I FLEX 777.7 DLO	1000kcmil - 750kcmil	3/8	0.406	0.875	2.169	1.625	3.525	White	I-125	ILD-125	1.500	1.172
CSWS-1000-12	1000kcmil	750 G,H,I FLEX 777.7 DLO	1000kcmil - 750kcmil	1/2	0.562	1.250	2.169	1.625	3.900	White	I-125	ILD-125	1.500	1.172
CSWS-1000-58	1000kcmil	750 G,H,I FLEX 777.7 DLO	1000kcmil - 750kcmil	5/8	0.656	1.437	2.169	1.625	4.087	White	I-125	ILD-125	1.500	1.172

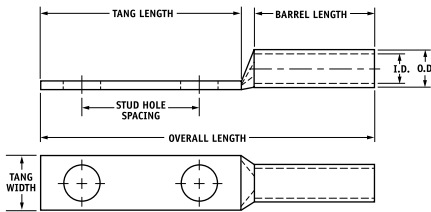
* When installed with specified dieless tools

See pages 34 to 39 for complete tooling information.

TYPE CSWD

Features

- Manufactured from high strength seamless copper tubing.
- Electro-Tin plated.
- Maximum conductivity and excellent crimping characteristics.
- Chamfered entry.
- Color coded.
- UL 486A 90°C Listed and CSA Certified for 600 Volts.
- If proper high voltage spacing and insulation techniques are used, may be used for high voltage applications up to 35KV.
- For Copper conductor only.
- IlSCO connectors are UL Listed and CSA Certified with ILSCO or other Manufacturers' tools.
- UL File E6207



Catalog Number	Wire Size	Alt Wire Size	Expanded* Wire Range	Bolt Size	Stud Hole Dia.	Stud Hole Spacing	Tang Length	Tang Width	Barrel Length	Overall Length	Die Color Code	Die Index	Die Catalog Number	O.D.	I.D.
CSWD-8-10-58	#8 AWG	#8 FLEX	-	10	0.219	0.625	1.250	0.374	0.500	1.945	Red	I-21	ILD-21	0.272	0.179
CSWD-8-10-34	#8 AWG	#8 FLEX	-	10	0.219	0.750	1.437	0.374	0.500	2.132	Red	I-21	ILD-21	0.272	0.179
+CSWD-8-14-58	#8 AWG	#8 FLEX	-	1/4	0.281	0.625	1.437	0.486	0.500	2.132	Red	I-21	ILD-21	0.272	0.179
+CSWD-8-14-34	#8 AWG	#8 FLEX	-	1/4	0.281	0.750	1.437	0.486	0.500	2.132	Red	I-21	ILD-21	0.272	0.179
+CSWD-8-14-1	#8 AWG	#8 FLEX	-	1/4	0.281	1.000	1.687	0.486	0.500	2.382	Red	I-21	ILD-21	0.272	0.179
+CSWD-8-38-1	#8 AWG	#8 FLEX	-	3/8	0.406	1.000	1.937	0.593	0.500	2.632	Red	I-21	ILD-21	0.272	0.179
CSWD-6-10-12	#6 AWG	-	-	10	0.219	0.500	1.250	0.411	0.500	1.945	Blue	I-24	ILD-24	0.295	0.203
CSWD-6-10-58	#6 AWG	-	-	10	0.219	0.625	1.250	0.411	0.500	1.945	Blue	I-24	ILD-24	0.295	0.203
CSWD-6-10-1116	#6 AWG	-	-	10	0.219	0.687	1.250	0.411	0.500	1.945	Blue	I-24	ILD-24	0.295	0.203
CSWD-6-10-34	#6 AWG	-	-	10	0.219	0.750	1.437	0.411	0.500	2.132	Blue	I-24	ILD-24	0.295	0.203
CSWD-6-14-12	#6 AWG	-	-	1/4	0.281	0.500	1.250	0.411	0.500	1.945	Blue	I-24	ILD-24	0.295	0.203
CSWD-6-14-58	#6 AWG	-	-	1/4	0.281	0.625	1.437	0.411	0.500	2.132	Blue	I-24	ILD-24	0.295	0.203
CSWD-6-14-34	#6 AWG	-	-	1/4	0.281	0.750	1.437	0.411	0.500	2.132	Blue	I-24	ILD-24	0.295	0.203
CSWD-6-14-1	#6 AWG	-	-	1/4	0.281	1.000	1.687	0.411	0.500	2.382	Blue	I-24	ILD-24	0.295	0.203
+CSWD-6-516-34	#6 AWG	-	-	5/16	0.343	0.750	1.687	0.532	0.500	2.382	Blue	I-24	ILD-24	0.295	0.203
+CSWD-6-516-1	#6 AWG	-	-	5/16	0.343	1.000	1.937	0.532	0.500	2.632	Blue	I-24	ILD-24	0.295	0.203
+CSWD-6-38-34	#6 AWG	-	-	3/8	0.406	0.750	1.687	0.593	0.500	2.382	Blue	I-24	ILD-24	0.295	0.203
+CSWD-6-38-78	#6 AWG	-	-	3/8	0.406	0.875	1.937	0.593	0.500	2.632	Blue	I-24	ILD-24	0.295	0.203
+CSWD-6-38-1	#6 AWG	-	-	3/8	0.406	1.000	1.937	0.593	0.500	2.632	Blue	I-24	ILD-24	0.295	0.203
+CSWD-6-12-134	#6 AWG	-	-	1/2	0.562	1.750	3.000	0.750	0.500	3.695	Blue	I-24	ILD-24	0.295	0.203

+ Available 3rd quarter 2008

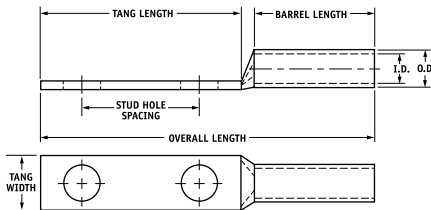
* When installed with specified dieless tools

See pages 34 to 39 for complete tooling information.

TYPE CSWD

Features

- Manufactured from high strength seamless copper tubing.
- Electro-Tin plated.
- Maximum conductivity and excellent crimping characteristics.
- Chamfered entry.
- Color coded.
- UL 486A 90°C Listed and CSA Certified for 600 Volts.
- If proper high voltage spacing and insulation techniques are used, may be used for high voltage applications up to 35KV.
- For Copper conductor only.
- IlSCO connectors are UL Listed and CSA Certified with ILSCO or other Manufacturers' tools.
- UL File E6207



Catalog Number	Wire Size	Alt Wire Size	Expanded* Wire Range	Bolt Size	Stud Hole Dia.	Stud Hole Spacing	Tang Length	Tang Width	Barrel Length	Overall Length	Die Color Code	Die Index	Die Catalog Number	O.D.	I.D.
CSWD-4-10-58	#4 AWG	#6 FLEX	4-6 AWG	10	0.219	0.625	1.250	0.486	0.500	1.984	Gray	I-29	ILD-29	0.343	0.250
CSWD-4-10-34	#4 AWG	#6 FLEX	4-6 AWG	10	0.219	0.750	1.437	0.486	0.500	2.171	Gray	I-29	ILD-29	0.343	0.250
CSWD-4-10-1	#4 AWG	#6 FLEX	4-6 AWG	10	0.219	1.000	1.687	0.486	0.500	2.421	Gray	I-29	ILD-29	0.343	0.250
CSWD-4-14-58	#4 AWG	#6 FLEX	4-6 AWG	1/4	0.281	0.625	1.437	0.486	0.500	2.171	Gray	I-29	ILD-29	0.343	0.250
CSWD-4-14-34	#4 AWG	#6 FLEX	4-6 AWG	1/4	0.281	0.750	1.437	0.486	0.500	2.171	Gray	I-29	ILD-29	0.343	0.250
CSWD-4-14-1	#4 AWG	#6 FLEX	4-6 AWG	1/4	0.281	1.000	1.687	0.486	0.500	2.421	Gray	I-29	ILD-29	0.343	0.250
CSWD-4-516-1	#4 AWG	#6 FLEX	4-6 AWG	1/4	0.343	1.000	1.937	0.486	0.500	2.671	Gray	I-29	ILD-29	0.343	0.250
+ CSWD-4-38-34	#4 AWG	#6 FLEX	4-6 AWG	3/8	0.406	0.750	1.687	0.593	0.500	2.421	Gray	I-29	ILD-29	0.343	0.250
+ CSWD-4-38-1	#4 AWG	#6 FLEX	4-6 AWG	3/8	0.406	1.000	1.937	0.593	0.500	2.671	Gray	I-29	ILD-29	0.343	0.250
+ CSWD-4-12-134	#4 AWG	#6 FLEX	4-6 AWG	1/2	0.562	1.750	3.000	0.750	0.500	3.734	Gray	I-29	ILD-29	0.343	0.250
CSWD-3-14-58	#3 AWG	#4 FLEX	3-6 AWG	1/4	0.281	0.625	1.437	0.532	0.625	2.317	White	I-29	ILD-29	0.375	0.275
CSWD-3-14-34	#3 AWG	#4 FLEX	3-6 AWG	1/4	0.281	0.750	1.437	0.532	0.625	2.317	White	I-29	ILD-29	0.375	0.275
CSWD-3-516-1	#3 AWG	#4 FLEX	3-6 AWG	5/16	0.343	1.000	1.937	0.532	0.625	2.817	White	I-29	ILD-29	0.375	0.275
+ CSWD-3-38-34	#3 AWG	#4 FLEX	3-6 AWG	3/8	0.406	0.750	1.687	0.593	0.625	2.567	White	I-29	ILD-29	0.375	0.275
CSWD-3-38-1	#3 AWG	#4 FLEX	3-6 AWG	3/8	0.406	1.000	1.937	0.593	0.625	2.817	White	I-29	ILD-29	0.375	0.275
+ CSWD-3-12-134	#3 AWG	#4 FLEX	3-6 AWG	1/2	0.562	1.750	3.000	0.750	0.625	3.880	White	I-29	ILD-29	0.375	0.275

+ Available 3rd quarter 2008

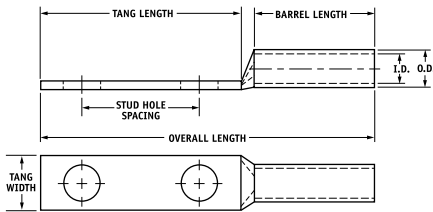
* When installed with specified dieless tools

See pages 34 to 39 for complete tooling information.

TYPE CSWD

Features

- Manufactured from high strength seamless copper tubing.
- Electro-Tin plated.
- Maximum conductivity and excellent crimping characteristics.
- Chamfered entry.
- Color coded.
- UL 486A 90°C Listed and CSA Certified for 600 Volts.
- If proper high voltage spacing and insulation techniques are used, may be used for high voltage applications up to 35KV.
- For Copper conductor only.
- IlSCO connectors are UL Listed and CSA Certified with ILSCO or other Manufacturers' tools.
- UL File E6207



Catalog Number	Wire Size	Alt Wire Size	Expanded* Wire Range	Bolt Size	Stud Hole Dia.	Stud Hole Spacing	Tang Length	Tang Width	Barrel Length	Overall Length	Die Color Code	Die Index	Die Catalog Number	O.D.	I.D.
CSWD-2-10-34	#2 AWG	-	2-6 AWG	10	0.219	0.750	1.437	0.599	0.625	2.348	Brown	I-33	ILD-33	0.421	0.312
CSWD-2-14-58	#2 AWG	-	2-6 AWG	1/4	0.281	0.625	1.437	0.599	0.625	2.348	Brown	I-33	ILD-33	0.421	0.312
CSWD-2-14-34	#2 AWG	-	2-6 AWG	1/4	0.281	0.750	1.437	0.599	0.625	2.348	Brown	I-33	ILD-33	0.421	0.312
CSWD-2-14-1	#2 AWG	-	2-6 AWG	1/4	0.281	1.000	1.687	0.599	0.625	2.598	Brown	I-33	ILD-33	0.421	0.312
CSWD-2-516-34	#2 AWG	-	2-6 AWG	5/16	0.343	0.750	1.687	0.599	0.625	2.598	Brown	I-33	ILD-33	0.421	0.312
CSWD-2-516-1	#2 AWG	-	2-6 AWG	5/16	0.343	1.000	1.937	0.599	0.625	2.848	Brown	I-33	ILD-33	0.421	0.312
CSWD-2-38-34	#2 AWG	-	2-6 AWG	3/8	0.406	0.750	1.687	0.599	0.625	2.598	Brown	I-33	ILD-33	0.421	0.312
CSWD-2-38-78	#2 AWG	-	2-6 AWG	3/8	0.406	0.875	1.937	0.599	0.625	2.848	Brown	I-33	ILD-33	0.421	0.312
CSWD-2-38-1	#2 AWG	-	2-6 AWG	3/8	0.406	1.000	1.937	0.599	0.625	2.848	Brown	I-33	ILD-33	0.421	0.312
CSWD-2-38-134	#2 AWG	-	2-6 AWG	3/8	0.406	1.750	2.625	0.599	0.625	3.536	Brown	I-33	ILD-33	0.421	0.312
+CSWD-2-12-134	#2 AWG	-	2-6 AWG	1/2	0.562	1.750	3.000	0.750	0.625	3.911	Brown	I-33	ILD-33	0.421	0.312
CSWD-1-14-58	#1 AWG	#2 FLEX	1-6 AWG	1/4	0.281	0.625	1.437	0.673	0.625	2.392	Green	I-37	ILD-37	0.468	0.359
CSWD-1-14-34	#1 AWG	#2 FLEX	1-6 AWG	1/4	0.281	0.750	1.437	0.673	0.625	2.392	Green	I-37	ILD-37	0.468	0.359
CSWD-1-14-1	#1 AWG	#2 FLEX	1-6 AWG	1/4	0.281	1.000	1.687	0.673	0.625	2.642	Green	I-37	ILD-37	0.468	0.359
CSWD-1-516-78	#1 AWG	#2 FLEX	1-6 AWG	5/16	0.343	0.875	1.687	0.673	0.625	2.642	Green	I-37	ILD-37	0.468	0.359
CSWD-1-516-1	#1 AWG	#2 FLEX	1-6 AWG	5/16	0.343	1.000	1.937	0.673	0.625	2.892	Green	I-37	ILD-37	0.468	0.359
CSWD-1-38-1	#1 AWG	#2 FLEX	1-6 AWG	3/8	0.406	1.000	1.937	0.673	0.625	2.892	Green	I-37	ILD-37	0.468	0.359
+CSWD-1-12-134	#1 AWG	#2 FLEX	1-6 AWG	1/2	0.562	1.750	3.000	0.750	0.625	3.955	Green	I-37	ILD-37	0.468	0.359
CSWD-1/0-14-58	1/0 AWG	#1 FLEX	1/0-6 AWG	1/4	0.281	0.625	1.437	0.738	0.750	2.543	Pink	I-42	ILD-42	0.515	0.390
CSWD-1/0-14-34	1/0 AWG	#1 FLEX	1/0-6 AWG	1/4	0.281	0.750	1.437	0.738	0.750	2.543	Pink	I-42	ILD-42	0.515	0.390
CSWD-1/0-14-1	1/0 AWG	#1 FLEX	1/0-6 AWG	1/4	0.281	1.000	1.687	0.738	0.750	2.793	Pink	I-42	ILD-42	0.515	0.390
CSWD-1/0-516-34	1/0 AWG	#1 FLEX	1/0-6 AWG	5/16	0.343	0.750	1.687	0.738	0.750	2.793	Pink	I-42	ILD-42	0.515	0.390
CSWD-1/0-516-78	1/0 AWG	#1 FLEX	1/0-6 AWG	5/16	0.343	0.875	1.687	0.738	0.750	2.793	Pink	I-42	ILD-42	0.515	0.390
CSWD-1/0-516-1	1/0 AWG	#1 FLEX	1/0-6 AWG	5/16	0.343	1.000	1.937	0.738	0.750	3.043	Pink	I-42	ILD-42	0.515	0.390
CSWD-1/0-38-1	1/0 AWG	#1 FLEX	1/0-6 AWG	3/8	0.406	1.000	1.937	0.738	0.750	3.043	Pink	I-42	ILD-42	0.515	0.390
CSWD-1/0-38-134	1/0 AWG	#1 FLEX	1/0-6 AWG	3/8	0.406	1.750	2.625	0.738	0.750	3.731	Pink	I-42	ILD-42	0.515	0.390
CSWD-1/0-12-1	1/0 AWG	#1 FLEX	1/0-6 AWG	1/2	0.562	1.000	2.125	0.738	0.750	3.231	Pink	I-42	ILD-42	0.515	0.390
CSWD-1/0-12-134	1/0 AWG	#1 FLEX	1/0-6 AWG	1/2	0.562	1.750	3.000	0.738	0.750	4.106	Pink	I-42	ILD-42	0.515	0.390

+ Available 3rd quarter 2008

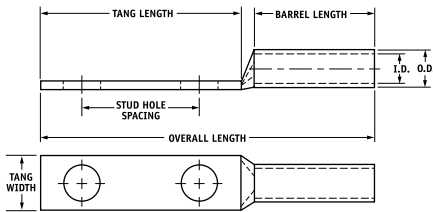
* When installed with specified dieless tools

See pages 34 to 39 for complete tooling information.

TYPE CSWD

Features

- Manufactured from high strength seamless copper tubing.
- Electro-Tin plated.
- Maximum conductivity and excellent crimping characteristics.
- Chamfered entry.
- Color coded.
- UL 486A 90°C Listed and CSA Certified for 600 Volts.
- If proper high voltage spacing and insulation techniques are used, may be used for high voltage applications up to 35KV.
- For Copper conductor only.
- IlSCO connectors are UL Listed and CSA Certified with ILSCO or other Manufacturers' tools.
- UL File E6207



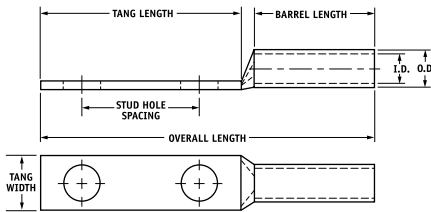
Catalog Number	Wire Size	Alt Wire Size	Expanded* Wire Range	Bolt Size	Stud Hole Dia.	Stud Hole Spacing	Tang Length	Tang Width	Barrel Length	Overall Length	Die Color Code	Die Index	Die Catalog Number	O.D.	I.D.
CSWD-2/0-14-58	2/0 AWG	1/0 FLEX	2/0-4 AWG	1/4	0.281	0.625	1.437	0.811	0.750	2.583	Black	I-45	ILD-45	0.562	0.437
CSWD-2/0-14-34	2/0 AWG	1/0 FLEX	2/0-4 AWG	1/4	0.281	0.750	1.437	0.811	0.750	2.583	Black	I-45	ILD-45	0.562	0.437
CSWD-2/0-14-1	2/0 AWG	1/0 FLEX	2/0-4 AWG	1/4	0.281	1.000	1.687	0.811	0.750	2.833	Black	I-45	ILD-45	0.562	0.437
CSWD-2/0-516-78	2/0 AWG	1/0 FLEX	2/0-4 AWG	5/16	0.343	0.875	1.687	0.811	0.750	2.833	Black	I-45	ILD-45	0.562	0.437
CSWD-2/0-516-1	2/0 AWG	1/0 FLEX	2/0-4 AWG	5/16	0.343	1.000	1.937	0.811	0.750	3.083	Black	I-45	ILD-45	0.562	0.437
CSWD-2/0-38-1	2/0 AWG	1/0 FLEX	2/0-4 AWG	3/8	0.406	1.000	1.937	0.811	0.750	3.083	Black	I-45	ILD-45	0.562	0.437
CSWD-2/0-38-134	2/0 AWG	1/0 FLEX	2/0-4 AWG	3/8	0.406	1.750	2.625	0.811	0.750	3.771	Black	I-45	ILD-45	0.562	0.437
CSWD-2/0-12-1	2/0 AWG	1/0 FLEX	2/0-4 AWG	1/2	0.562	1.000	2.125	0.811	0.750	3.271	Black	I-45	ILD-45	0.562	0.437
CSWD-2/0-12-134	2/0 AWG	1/0 FLEX	2/0-4 AWG	1/2	0.562	1.750	3.000	0.811	0.750	4.146	Black	I-45	ILD-45	0.562	0.437
CSWD-3/0-14-58	3/0 AWG	2/0 FLEX	3/0-2 AWG	1/4	0.281	0.625	1.437	0.885	0.750	2.626	Orange	I-50	ILD-50	0.609	0.484
CSWD-3/0-14-34	3/0 AWG	2/0 FLEX	3/0-2 AWG	1/4	0.281	0.750	1.437	0.885	0.750	2.626	Orange	I-50	ILD-50	0.609	0.484
CSWD-3/0-516-1	3/0 AWG	2/0 FLEX	3/0-2 AWG	5/16	0.343	1.000	1.937	0.885	0.750	3.126	Orange	I-50	ILD-50	0.609	0.484
CSWD-3/0-38-1	3/0 AWG	2/0 FLEX	3/0-2 AWG	3/8	0.406	1.000	1.937	0.885	0.750	3.126	Orange	I-50	ILD-50	0.609	0.484
CSWD-3/0-12-134	3/0 AWG	2/0 FLEX	3/0-2 AWG	1/2	0.562	1.750	3.000	0.885	0.750	4.189	Orange	I-50	ILD-50	0.609	0.484
CSWD-4/0-14-58	4/0 AWG	3/0 FLEX	4/0-1 AWG	1/4	0.281	0.625	1.437	0.999	0.875	2.803	Purple	I-54	ILD-54	0.687	0.546
CSWD-4/0-14-34	4/0 AWG	3/0 FLEX	4/0-1 AWG	1/4	0.281	0.750	1.437	0.999	0.875	2.803	Purple	I-54	ILD-54	0.687	0.546
CSWD-4/0-14-1	4/0 AWG	3/0 FLEX	4/0-1 AWG	1/4	0.281	1.000	1.687	0.999	0.875	3.053	Purple	I-54	ILD-54	0.687	0.546
CSWD-4/0-516-34	4/0 AWG	3/0 FLEX	4/0-1 AWG	5/16	0.343	0.750	1.687	0.999	0.875	3.053	Purple	I-54	ILD-54	0.687	0.546
CSWD-4/0-516-1	4/0 AWG	3/0 FLEX	4/0-1 AWG	5/16	0.343	1.000	1.937	0.999	0.875	3.303	Purple	I-54	ILD-54	0.687	0.546
CSWD-4/0-516-134	4/0 AWG	3/0 FLEX	4/0-1 AWG	5/16	0.343	1.750	2.500	0.999	0.875	3.866	Purple	I-54	ILD-54	0.687	0.546
CSWD-4/0-38-1	4/0 AWG	3/0 FLEX	4/0-1 AWG	3/8	0.406	1.000	1.937	0.999	0.875	3.303	Purple	I-54	ILD-54	0.687	0.546
CSWD-4/0-38-134	4/0 AWG	3/0 FLEX	4/0-1 AWG	3/8	0.406	1.750	2.625	0.999	0.875	3.991	Purple	I-54	ILD-54	0.687	0.546
CSWD-4/0-12-1	4/0 AWG	3/0 FLEX	4/0-1 AWG	1/2	0.562	1.000	2.125	0.999	0.875	3.491	Purple	I-54	ILD-54	0.687	0.546
CSWD-4/0-12-114	4/0 AWG	3/0 FLEX	4/0-1 AWG	1/2	0.562	1.250	2.500	0.999	0.875	3.866	Purple	I-54	ILD-54	0.687	0.546
CSWD-4/0-12-134	4/0 AWG	3/0 FLEX	4/0-1 AWG	1/2	0.562	1.750	3.000	0.999	0.875	4.366	Purple	I-54	ILD-54	0.687	0.546

* When installed with specified dieless tools
See pages 34 to 39 for complete tooling information.

TYPE CSWD

Features

- Manufactured from high strength seamless copper tubing.
- Electro-Tin plated.
- Maximum conductivity and excellent crimping characteristics.
- Chamfered entry.
- Color coded.
- UL 486A 90°C Listed and CSA Certified for 600 Volts.
- If proper high voltage spacing and insulation techniques are used, may be used for high voltage applications up to 35KV.
- For Copper conductor only.
- IlSCO connectors are UL Listed and CSA Certified with ILSCO or other Manufacturers' tools.
- UL File E6207



Catalog Number	Wire Size	Alt Wire Size	Expanded* Wire Range	Bolt Size	Stud Hole Dia.	Stud Hole Spacing	Tang Length	Tang Width	Barrel Length	Overall Length	Die Color Code	Die Index	Die Catalog Number	O.D.	I.D.
CSWD-250-14-34	250kcmil	4/0 FLEX	250kcmil - 1/0 AWG	1/4	0.281	0.750	1.437	1.088	1.063	3.031	Yellow	I-62	ILD-62	0.750	0.593
CSWD-250-38-1	250kcmil	4/0 FLEX	250kcmil - 1/0 AWG	3/8	0.406	1.00	1.937	1.088	1.063	3.531	Yellow	I-62	ILD-62	0.750	0.593
CSWD-250-38-134	250kcmil	4/0 FLEX	250kcmil - 1/0 AWG	3/8	0.406	1.750	2.625	1.088	1.063	4.219	Yellow	I-62	ILD-62	0.750	0.593
CSWD-250-12-114	250kcmil	4/0 FLEX	250kcmil - 1/0 AWG	1/2	0.562	1.250	2.500	1.088	1.063	4.094	Yellow	I-62	ILD-62	0.750	0.593
CSWD-250-12-134	250kcmil	4/0 FLEX	250kcmil - 1/0 AWG	1/2	0.562	1.750	3.000	1.088	1.063	4.594	Yellow	I-62	ILD-62	0.750	0.593
CSWD-300-38-1	300kcmil	250 G,H FLEX	300kcmil - 2/0 AWG	3/8	0.406	1.000	1.937	1.189	1.063	3.587	White	I-66	ILD-66	0.812	0.660
CSWD-300-12-134	300kcmil	250 G,H FLEX	300kcmil - 2/0 AWG	1/2	0.562	1.750	3.000	1.189	1.063	4.650	White	I-66	ILD-66	0.812	0.660
CSWD-350-14-34	350kcmil	250 I,K,M FLEX 262.2 DLO	350kcmil - 3/0 AWG	1/4	0.281	0.750	1.437	1.291	1.063	3.123	Red	I-71	ILD-71	0.890	0.703
CSWD-350-516-134	350kcmil	250 I,K,M FLEX 262.2 DLO	350kcmil - 3/0 AWG	5/16	0.343	1.750	2.500	1.291	1.063	4.186	Red	I-71	ILD-71	0.890	0.703
CSWD-350-38-1	350kcmil	250 I,K,M FLEX 262.2 DLO	350kcmil - 3/0 AWG	3/8	0.406	1.000	1.937	1.291	1.063	3.623	Red	I-71	ILD-71	0.890	0.703
CSWD-350-12-114	350kcmil	250 I,K,M FLEX 262.2 DLO	350kcmil - 3/0 AWG	1/2	0.562	1.250	2.500	1.291	1.063	4.186	Red	I-71	ILD-71	0.890	0.703
CSWD-350-12-134	350kcmil	250 I,K,M FLEX 262.2 DLO	350kcmil - 3/0 AWG	1/2	0.562	1.750	3.000	1.291	1.063	4.686	Red	I-71	ILD-71	0.890	0.703
CSWD-400-38-1	400kcmil	300 G,H,I,K,M FLEX 313.1 DLO	400kcmil - 4/0 AWG	3/8	0.406	1.000	1.937	1.365	1.188	3.792	Blue	I-76	ILD-76	0.937	0.750
CSWD-400-38-116	400kcmil	300 G,H,I,K,M FLEX 313.1 DLO	400kcmil - 4/0 AWG	3/8	0.406	1.062	1.937	1.365	1.188	3.792	Blue	I-76	ILD-76	0.937	0.750
CSWD-400-12-134	400kcmil	300 G,H,I,K,M FLEX 313.1 DLO	400kcmil - 4/0 AWG	1/2	0.562	1.750	3.000	1.365	1.188	4.855	Blue	I-76	ILD-76	0.937	0.750
CSWD-500-14-34	500kcmil	350 G,H,I,K,M FLEX 373.7 DLO	500kcmil - 250kcmil	1/4	0.281	0.750	1.437	1.535	1.300	3.469	Brown	I-87	ILD-87	1.062	0.828
CSWD-500-38-1	500kcmil	350 G,H,I,K,M FLEX 373.7 DLO	500kcmil - 250kcmil	3/8	0.406	1.000	1.937	1.535	1.300	3.969	Brown	I-87	ILD-87	1.062	0.828
CSWD-500-12-114	500kcmil	350 G,H,I,K,M FLEX 373.7 DLO	500kcmil - 250kcmil	1/2	0.562	1.250	2.500	1.535	1.300	4.532	Brown	I-87	ILD-87	1.062	0.828
CSWD-500-12-134	500kcmil	350 G,H,I,K,M FLEX 373.7 DLO	500kcmil - 250kcmil	1/2	0.562	1.750	3.000	1.535	1.300	5.032	Brown	I-87	ILD-87	1.062	0.828

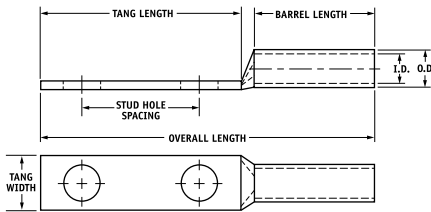
* When installed with specified dieless tools

See pages 34 to 39 for complete tooling information.

TYPE CSWD

Features

- Manufactured from high strength seamless copper tubing.
- Electro-Tin plated.
- Maximum conductivity and excellent crimping characteristics.
- Chamfered entry.
- Color coded.
- UL 486A 90°C Listed and CSA Certified for 600 Volts.
- If proper high voltage spacing and insulation techniques are used, may be used for high voltage applications up to 35KV.
- For Copper conductor only.
- IlSCO connectors are UL Listed and CSA Certified with ILSCO or other Manufacturers' tools.
- UL File E6207



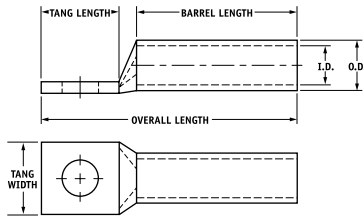
Catalog Number	Wire Size	Alt Wire Size	Expanded* Wire Range	Bolt Size	Stud Hole Dia.	Stud Hole Spacing	Tang Length	Tang Width	Barrel Length	Overall Length	Die Color Code	Die Index	Die Catalog Number	O.D.	I.D.
CSWD-600-38-1	600kcmil	400 G,H,I,K,M FLEX 444.4 DLO	600kcmil - 250kcmil	3/8	0.406	1.000	1.937	1.712	1.375	4.121	Green	I-94	ILD-94	1.187	0.920
CSWD-600-12-134	600kcmil	400 G,H,I,K,M FLEX 444.4 DLO	600kcmil - 250kcmil	1/2	0.562	1.750	3.000	1.712	1.375	5.184	Green	I-94	ILD-94	1.187	0.920
CSWD-700-38-1	700kcmil	500 G,H,I,K,M FLEX 535.3 DLO	700kcmil - 350kcmil	3/8	0.406	1.000	1.937	1.816	1.375	4.181	Pink	I-99	ILD-99	1.250	0.991
CSWD-700-12-114	700kcmil	500 G,H,I,K,M FLEX 535.3 DLO	700kcmil - 350kcmil	1/2	0.562	1.250	2.500	1.816	1.375	4.744	Pink	I-99	ILD-99	1.250	0.991
CSWD-700-12-134	700kcmil	500 G,H,I,K,M FLEX 535.3 DLO	700kcmil - 350kcmil	1/2	0.562	1.750	3.000	1.816	1.375	5.244	Pink	I-99	ILD-99	1.250	0.991
CSWD-700-12-178	700kcmil	500 G,H,I,K,M FLEX 535.3 DLO	700kcmil - 350kcmil	1/2	0.562	1.875	3.000	1.816	1.375	5.244	Pink	I-99	ILD-99	1.250	0.991
CSWD-750-38-1	750kcmil	600 G,H,I,M FLEX 646.4 DLO	750kcmil - 500kcmil	3/8	0.406	1.000	1.937	1.901	1.500	4.339	Black	I-106	ILD-106	1.313	1.031
CSWD-750-38-118	750kcmil	600 G,H,I,M FLEX 646.4 DLO	750kcmil - 500kcmil	3/8	0.406	1.125	2.125	1.901	1.500	4.527	Black	I-106	ILD-106	1.313	1.031
CSWD-750-12-112	750kcmil	600 G,H,I,M FLEX 646.4 DLO	750kcmil - 500kcmil	1/2	0.562	1.500	2.625	1.901	1.500	5.027	Black	I-106	ILD-106	1.313	1.031
CSWD-750-12-134	750kcmil	600 G,H,I,M FLEX 646.4 DLO	750kcmil - 500kcmil	1/2	0.562	1.750	3.000	1.901	1.500	5.402	Black	I-106	ILD-106	1.313	1.031
CSWD-750-58-112	750kcmil	600 G,H,I,M FLEX 646.4 DLO	750kcmil - 500kcmil	5/8	0.562	1.500	3.000	1.901	1.500	5.402	Black	I-106	ILD-106	1.313	1.031
CSWD-1000-38-1	1000kcmil	750 G,H,I FLEX 777.7 DLO	1000kcmil - 750kcmil	3/8	0.406	1.000	1.937	2.169	1.625	4.587	White	I-125	ILD-125	1.500	1.172
CSWD-1000-12-114	1000kcmil	750 G,H,I FLEX 777.7 DLO	1000kcmil - 750kcmil	1/2	0.562	1.250	2.500	2.169	1.625	5.150	White	I-125	ILD-125	1.500	1.172
CSWD-1000-12-134	1000kcmil	750 G,H,I FLEX 777.7 DLO	1000kcmil - 750kcmil	1/2	0.562	1.750	3.000	2.169	1.625	5.650	White	I-125	ILD-125	1.500	1.172
CSWD-1000-58-112	1000kcmil	750 G,H,I FLEX 777.7 DLO	1000kcmil - 750kcmil	5/8	0.562	1.500	3.000	2.169	1.625	5.650	White	I-125	ILD-125	1.500	1.172

* When installed with specified dieless tools
See pages 34 to 39 for complete tooling information.

TYPE CLWS

Features

- Manufactured from high strength seamless copper tubing.
- Electro-Tin plated.
- Maximum conductivity and excellent crimping characteristics.
- Long barrel length with chamfered entry.
- Color coded.
- UL 486A 90°C Listed and CSA Certified for 600 Volts.
- If proper high voltage spacing and insulation techniques are used, may be used for high voltage applications up to 35KV.
- For Copper conductor only.
- IlSCO connectors are UL Listed and CSA Certified with ILSCO or other Manufacturers' tools.
- UL File E6207



Catalog Number	Wire Size	Alt Wire Size	Expanded* Wire Range	Bolt Size	Stud Hole Dia.	Tang Length	Tang Width	Barrel Length	Overall Length	Die Color Code	Die Index	Die Catalog Number	O.D.	I.D.
CLWS-8-10	#8 AWG	#8 FLEX	-	10	0.219	0.562	0.374	0.812	1.569	Red	I-21	ILD-21	0.272	0.179
+CLWS-8-14	#8 AWG	#8 FLEX	-	1/4	0.281	0.680	0.486	0.812	1.687	Red	I-21	ILD-21	0.272	0.179
+CLWS-8-516	#8 AWG	#8 FLEX	-	5/16	0.343	0.875	0.532	0.812	1.882	Red	I-21	ILD-21	0.272	0.179
+CLWS-8-38	#8 AWG	#8 FLEX	-	3/8	0.406	0.875	0.593	0.812	1.882	Red	I-21	ILD-21	0.272	0.179
CLWS-6-10	#6 AWG	-	-	10	0.219	0.562	0.411	1.125	1.882	Blue	I-24	ILD-24	0.295	0.203
CLWS-6-14	#6 AWG	-	-	1/4	0.281	0.680	0.411	1.125	2.000	Blue	I-24	ILD-24	0.295	0.203
+CLWS-6-516	#6 AWG	-	-	5/16	0.343	0.875	0.532	1.125	2.195	Blue	I-24	ILD-24	0.295	0.203
+CLWS-6-38	#6 AWG	-	-	3/8	0.406	0.875	0.593	1.125	2.195	Blue	I-24	ILD-24	0.295	0.203
+CLWS-6-12	#6 AWG	-	-	1/2	0.562	1.250	0.750	1.125	2.570	Blue	I-24	ILD-24	0.295	0.203
+CLWS-6-34	#6 AWG	-	-	3/4	0.781	1.687	0.411	1.125	3.007	Blue	I-24	ILD-24	0.295	0.203
CLWS-4-10	#4 AWG	#6 FLEX	4-6 AWG	10	0.219	0.562	0.486	1.125	1.921	Gray	I-29	ILD-29	0.343	0.250
CLWS-4-14	#4 AWG	#6 FLEX	4-6 AWG	1/4	0.281	0.680	0.486	1.125	2.039	Gray	I-29	ILD-29	0.343	0.250
CLWS-4-516	#4 AWG	#6 FLEX	4-6 AWG	5/16	0.343	0.875	0.486	1.125	2.234	Gray	I-29	ILD-29	0.343	0.250
+CLWS-4-38	#4 AWG	#6 FLEX	4-6 AWG	3/8	0.406	0.875	0.593	1.125	2.234	Gray	I-29	ILD-29	0.343	0.250
+CLWS-4-12	#4 AWG	#6 FLEX	4-6 AWG	1/2	0.562	1.250	0.750	1.125	2.609	Gray	I-29	ILD-29	0.343	0.250
CLWS-3-10	#3 AWG	#4 FLEX	3-6 AWG	10	0.219	0.562	0.532	1.125	1.942	White	I-29	ILD-29	0.375	0.275
CLWS-3-14	#3 AWG	#4 FLEX	3-6 AWG	1/4	0.281	0.680	0.532	1.125	2.060	White	I-29	ILD-29	0.375	0.275
CLWS-3-516	#3 AWG	#4 FLEX	3-6 AWG	5/16	0.343	0.875	0.532	1.125	2.255	White	I-29	ILD-29	0.375	0.275
+CLWS-3-38	#3 AWG	#4 FLEX	3-6 AWG	3/8	0.406	0.875	0.593	1.125	2.255	White	I-29	ILD-29	0.375	0.275
+CLWS-3-12	#3 AWG	#4 FLEX	3-6 AWG	1/2	0.562	1.250	0.750	1.125	2.630	White	I-29	ILD-29	0.375	0.275
CLWS-2-10	#2 AWG	-	2-6 AWG	10	0.219	0.562	0.599	1.125	1.973	Brown	I-33	ILD-33	0.421	0.312
CLWS-2-14	#2 AWG	-	2-6 AWG	1/4	0.281	0.680	0.599	1.125	2.091	Brown	I-33	ILD-33	0.421	0.312
CLWS-2-516	#2 AWG	-	2-6 AWG	5/16	0.343	0.875	0.599	1.125	2.286	Brown	I-33	ILD-33	0.421	0.312
CLWS-2-38	#2 AWG	-	2-6 AWG	3/8	0.406	0.875	0.599	1.125	2.286	Brown	I-33	ILD-33	0.421	0.312
+CLWS-2-12	#2 AWG	-	2-6 AWG	1/2	0.562	1.250	0.750	1.125	2.661	Brown	I-33	ILD-33	0.421	0.312

+ Available 3rd quarter 2008

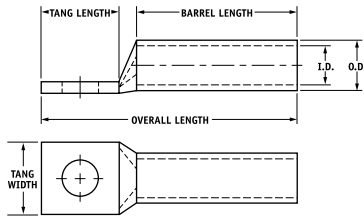
* When installed with specified dieless tools

See pages 34 to 39 for complete tooling information.

TYPE CLWS

Features

- Manufactured from high strength seamless copper tubing.
- Electro-Tin plated.
- Maximum conductivity and excellent crimping characteristics.
- Long barrel length with chamfered entry.
- Color coded.
- UL 486A 90°C Listed and CSA Certified for 600 Volts.
- If proper high voltage spacing and insulation techniques are used, may be used for high voltage applications up to 35KV.
- For Copper conductor only.
- IlSCO connectors are UL Listed and CSA Certified with ILSCO or other Manufacturers' tools.
- UL File E6207



Catalog Number	Wire Size	Alt Wire Size	Expanded* Wire Range	Bolt Size	Stud Hole Dia.	Tang Length	Tang Width	Barrel Length	Overall Length	Die Color Code	Die Index	Die Catalog Number	O.D.	I.D.
CLWS-1-10	#1 AWG	#2 FLEX	1-6 AWG	10	0.219	0.562	0.673	1.375	2.267	Green	I-37	ILD-37	0.468	0.359
CLWS-1-14	#1 AWG	#2 FLEX	1-6 AWG	1/4	0.281	0.875	0.673	1.375	2.580	Green	I-37	ILD-37	0.468	0.359
CLWS-1-516	#1 AWG	#2 FLEX	1-6 AWG	5/16	0.343	0.875	0.673	1.375	2.580	Green	I-37	ILD-37	0.468	0.359
CLWS-1-38	#1 AWG	#2 FLEX	1-6 AWG	3/8	0.406	0.875	0.673	1.375	2.580	Green	I-37	ILD-37	0.468	0.359
+CLWS-1-12	#1 AWG	#2 FLEX	1-6 AWG	1/2	0.562	1.250	0.750	1.375	2.955	Green	I-37	ILD-37	0.468	0.359
CLWS-1/0-10	1/0 AWG	#1 FLEX	1/0-6 AWG	10	0.219	0.562	0.738	1.500	2.418	Pink	I-42	ILD-42	0.515	0.390
CLWS-1/0-14	1/0 AWG	#1 FLEX	1/0-6 AWG	1/4	0.281	0.875	0.738	1.500	2.731	Pink	I-42	ILD-42	0.515	0.390
CLWS-1/0-516	1/0 AWG	#1 FLEX	1/0-6 AWG	5/16	0.343	0.875	0.738	1.500	2.731	Pink	I-42	ILD-42	0.515	0.390
CLWS-1/0-38	1/0 AWG	#1 FLEX	1/0-6 AWG	3/8	0.406	0.875	0.738	1.500	2.731	Pink	I-42	ILD-42	0.515	0.390
CLWS-1/0-12	1/0 AWG	#1 FLEX	1/0-6 AWG	1/2	0.562	1.250	0.738	1.500	3.106	Pink	I-42	ILD-42	0.515	0.390
CLWS-2/0-10	2/0 AWG	1/0 FLEX	2/0-4 AWG	10	0.219	0.562	0.811	1.500	2.458	Black	I-45	ILD-45	0.562	0.437
CLWS-2/0-14	2/0 AWG	1/0 FLEX	2/0-4 AWG	1/4	0.281	0.875	0.811	1.500	2.771	Black	I-45	ILD-45	0.562	0.437
CLWS-2/0-516	2/0 AWG	1/0 FLEX	2/0-4 AWG	5/16	0.343	0.875	0.811	1.500	2.771	Black	I-45	ILD-45	0.562	0.437
CLWS-2/0-38	2/0 AWG	1/0 FLEX	2/0-4 AWG	3/8	0.406	0.875	0.811	1.500	2.771	Black	I-45	ILD-45	0.562	0.437
CLWS-2/0-12	2/0 AWG	1/0 FLEX	2/0-4 AWG	1/2	0.562	1.250	0.811	1.500	3.146	Black	I-45	ILD-45	0.562	0.437
CLWS-3/0-10	3/0 AWG	2/0 FLEX	3/0-2 AWG	10	0.219	0.562	0.885	1.500	2.501	Orange	I-50	ILD-50	0.609	0.484
CLWS-3/0-14	3/0 AWG	2/0 FLEX	3/0-2 AWG	1/4	0.281	0.875	0.885	1.500	2.814	Orange	I-50	ILD-50	0.609	0.484
CLWS-3/0-516	3/0 AWG	2/0 FLEX	3/0-2 AWG	5/16	0.343	0.875	0.885	1.500	2.814	Orange	I-50	ILD-50	0.609	0.484
CLWS-3/0-38	3/0 AWG	2/0 FLEX	3/0-2 AWG	3/8	0.406	0.875	0.885	1.500	2.814	Orange	I-50	ILD-50	0.609	0.484
CLWS-3/0-12	3/0 AWG	2/0 FLEX	3/0-2 AWG	1/2	0.562	1.250	0.885	1.500	3.189	Orange	I-50	ILD-50	0.609	0.484
CLWS-4/0-14	4/0 AWG	3/0 FLEX	4/0-1 AWG	1/4	0.281	0.875	0.999	1.500	2.866	Purple	I-54	ILD-54	0.687	0.546
CLWS-4/0-516	4/0 AWG	3/0 FLEX	4/0-1 AWG	5/16	0.343	0.875	0.999	1.500	2.866	Purple	I-54	ILD-54	0.687	0.546
CLWS-4/0-38	4/0 AWG	3/0 FLEX	4/0-1 AWG	3/8	0.406	0.875	0.999	1.500	2.866	Purple	I-54	ILD-54	0.687	0.546
CLWS-4/0-12	4/0 AWG	3/0 FLEX	4/0-1 AWG	1/2	0.562	1.250	0.999	1.500	3.241	Purple	I-54	ILD-54	0.687	0.546
CLWS-250-516	250kcmil	4/0 FLEX	250kcmil - 1/0 AWG	5/16	0.343	0.875	1.088	1.688	3.094	Yellow	I-62	ILD-62	0.750	0.593
CLWS-250-38	250kcmil	4/0 FLEX	250kcmil - 1/0 AWG	3/8	0.406	0.875	1.088	1.688	3.094	Yellow	I-62	ILD-62	0.750	0.593
CLWS-250-12	250kcmil	4/0 FLEX	250kcmil - 1/0 AWG	1/2	0.562	1.250	1.088	1.688	3.469	Yellow	I-62	ILD-62	0.750	0.593
CLWS-300-516	300kcmil	250 G,H FLEX	300kcmil - 2/0 AWG	5/16	0.343	0.875	1.189	2.000	3.462	White	I-66	ILD-66	0.812	0.660
CLWS-300-38	300kcmil	250 G,H FLEX	300kcmil - 2/0 AWG	3/8	0.406	0.875	1.189	2.000	3.462	White	I-66	ILD-66	0.812	0.660
CLWS-300-12	300kcmil	250 G,H FLEX	300kcmil - 2/0 AWG	1/2	0.562	1.250	1.189	2.000	3.837	White	I-66	ILD-66	0.812	0.660

+ Available 3rd quarter 2008

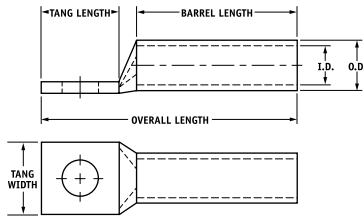
* When installed with specified dieless tools

See pages 34 to 39 for complete tooling information.

TYPE CLWS

Features

- Manufactured from high strength seamless copper tubing.
- Electro-Tin plated.
- Maximum conductivity and excellent crimping characteristics.
- Long barrel length with chamfered entry.
- Color coded.
- UL 486A 90°C Listed and CSA Certified for 600 Volts.
- If proper high voltage spacing and insulation techniques are used, may be used for high voltage applications up to 35KV.
- For Copper conductor only.
- IlSCO connectors are UL Listed and CSA Certified with ILSCO or other Manufacturers' tools.
- UL File E6207



Catalog Number	Wire Size	Alt Wire Size	Expanded* Wire Range	Bolt Size	Stud Hole Dia.	Tang Length	Tang Width	Barrel Length	Overall Length	Die Color Code	Die Index	Die Catalog Number	O.D.	I.D.
CLWS-350-38	350kcmil	250 I,K,M FLEX 262.2 DLO	350kcmil - 3/0 AWG	3/8	0.406	0.875	1.291	2.000	3.498	Red	I-71	ILD-71	0.890	0.703
CLWS-350-12	350kcmil	250 I,K,M FLEX 262.2 DLO	350kcmil - 3/0 AWG	1/2	0.562	1.250	1.291	2.000	3.873	Red	I-71	ILD-71	0.890	0.703
CLWS-350-58	350kcmil	250 I,K,M FLEX 262.2 DLO	350kcmil - 3/0 AWG	5/8	0.656	1.437	1.291	2.000	4.060	Red	I-71	ILD-71	0.890	0.703
CLWS-400-38	400kcmil	300 G,H,I,K,M FLEX 313.1 DLO	400kcmil - 4/0 AWG	3/8	0.406	0.875	1.365	2.125	3.667	Blue	I-76	ILD-76	0.937	0.750
CLWS-400-12	400kcmil	300 G,H,I,K,M FLEX 313.1 DLO	400kcmil - 4/0 AWG	1/2	0.562	1.250	1.365	2.125	4.042	Blue	I-76	ILD-76	0.937	0.750
CLWS-400-58	400kcmil	300 G,H,I,K,M FLEX 313.1 DLO	400kcmil - 4/0 AWG	5/8	0.656	1.437	1.365	2.125	4.229	Blue	I-76	ILD-76	0.937	0.750
CLWS-500-38	500kcmil	350 G,H,I,K,M FLEX 373.7 DLO	500kcmil - 250kcmil	3/8	0.406	0.875	1.535	2.250	3.857	Brown	I-87	ILD-87	1.062	0.828
CLWS-500-12	500kcmil	350 G,H,I,K,M FLEX 373.7 DLO	500kcmil - 250kcmil	1/2	0.562	1.250	1.535	2.250	4.232	Brown	I-87	ILD-87	1.062	0.828
CLWS-500-58	500kcmil	350 G,H,I,K,M FLEX 373.7 DLO	500kcmil - 250kcmil	5/8	0.656	1.437	1.535	2.250	4.419	Brown	I-87	ILD-87	1.062	0.828
CLWS-600-38	600kcmil	400 G,H,I,K,M FLEX 444.4 DLO	600kcmil - 250kcmil	3/8	0.406	0.875	1.712	2.687	4.371	Green	I-94	ILD-94	1.187	0.920
CLWS-600-12	600kcmil	400 G,H,I,K,M FLEX 444.4 DLO	600kcmil - 250kcmil	1/2	0.562	1.250	1.712	2.687	4.746	Green	I-94	ILD-94	1.187	0.920
CLWS-600-58	600kcmil	400 G,H,I,K,M FLEX 444.4 DLO	600kcmil - 250kcmil	5/8	0.656	1.437	1.712	2.687	4.933	Green	I-94	ILD-94	1.187	0.920
CLWS-700-38	700kcmil	500 G,H,I,K,M FLEX 535.3 DLO	700kcmil - 350kcmil	3/8	0.406	0.875	1.816	2.687	4.431	Pink	I-99	ILD-99	1.250	0.991
CLWS-700-12	700kcmil	500 G,H,I,K,M FLEX 535.3 DLO	700kcmil - 350kcmil	1/2	0.562	1.250	1.816	2.687	4.806	Pink	I-99	ILD-99	1.250	0.991
CLWS-700-58	700kcmil	500 G,H,I,K,M FLEX 535.3 DLO	700kcmil - 350kcmil	5/8	0.656	1.437	1.816	2.687	4.993	Pink	I-99	ILD-99	1.250	0.991
CLWS-750-38	750kcmil	600 G,H,I,K,M FLEX 646.4 DLO	750kcmil - 500kcmil	3/8	0.406	0.875	1.901	2.875	4.652	Black	I-106	ILD-106	1.313	1.031
CLWS-750-12	750kcmil	600 G,H,I,K,M FLEX 646.4 DLO	750kcmil - 500kcmil	1/2	0.562	1.250	1.901	2.875	5.027	Black	I-106	ILD-106	1.313	1.031
CLWS-750-58	750kcmil	600 G,H,I,K,M FLEX 646.4 DLO	750kcmil - 500kcmil	5/8	0.656	1.437	1.901	2.875	5.214	Black	I-106	ILD-106	1.313	1.031
CLWS-1000-38	1000kcmil	750 G,H,I FLEX 777.7 DLO	1000kcmil - 750kcmil	3/8	0.406	0.875	2.169	3.000	4.900	White	I-125	ILD-125	1.500	1.172
CLWS-1000-12	1000kcmil	750 G,H,I FLEX 777.7 DLO	1000kcmil - 750kcmil	1/2	0.562	1.250	2.169	3.000	5.275	White	I-125	ILD-125	1.500	1.172
CLWS-1000-58	1000kcmil	750 G,H,I FLEX 777.7 DLO	1000kcmil - 750kcmil	5/8	0.656	1.437	2.169	3.000	5.462	White	I-125	ILD-125	1.500	1.172

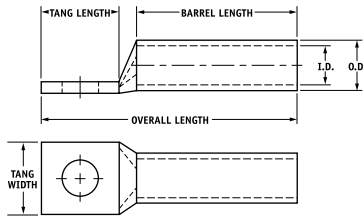
* When installed with specified dieless tools

See pages 34 to 39 for complete tooling information.

TYPE CLNS

Features

- Manufactured from high strength seamless copper tubing.
- Electro-Tin plated.
- Maximum conductivity and excellent crimping characteristics.
- Long barrel length with chamfered entry.
- Color coded.
- UL 486A 90°C Listed and CSA Certified for 600 Volts.
- If proper high voltage spacing and insulation techniques are used, may be used for high voltage applications up to 35KV.
- For Copper conductor only.
- IlSCO connectors are UL Listed and CSA Certified with ILSCO or other Manufacturers' tools.
- UL File E6207



Catalog Number	Wire Size	Alt Wire Size	Expanded* Wire Range	Bolt Size	Stud Hole Dia.	Tang Length	Tang Width	Barrel Length	Overall Length	Die Color Code	Die Index	Die Catalog Number	O.D.	I.D.
CLNS-8-10	#8 AWG	#8 FLEX	-	10	0.219	0.562	0.374	0.812	1.569	Red	I-21	ILD-21	0.272	0.179
+CLNS-8-14	#8 AWG	#8 FLEX	-	1/4	0.281	0.680	0.486	0.812	1.687	Red	I-21	ILD-21	0.272	0.179
+CLNS-8-516	#8 AWG	#8 FLEX	-	5/16	0.343	0.875	0.532	0.812	1.882	Red	I-21	ILD-21	0.272	0.179
+CLNS-8-38	#8 AWG	#8 FLEX	-	3/8	0.406	0.875	0.593	0.812	1.882	Red	I-21	ILD-21	0.272	0.179
CLNS-6-10	#6 AWG	-	-	10	0.219	0.562	0.411	1.125	1.882	Blue	I-24	ILD-24	0.295	0.203
CLNS-6-14	#6 AWG	-	-	1/4	0.281	0.680	0.411	1.125	2.000	Blue	I-24	ILD-24	0.295	0.203
+CLNS-6-516	#6 AWG	-	-	5/16	0.343	0.875	0.532	1.125	2.195	Blue	I-24	ILD-24	0.295	0.203
+CLNS-6-38	#6 AWG	-	-	3/8	0.406	0.875	0.593	1.125	2.195	Blue	I-24	ILD-24	0.295	0.203
+CLNS-6-12	#6 AWG	-	-	1/2	0.562	1.250	0.750	1.125	2.570	Blue	I-24	ILD-24	0.295	0.203
CLNS-4-10	#4 AWG	#6 FLEX	4-6 AWG	10	0.219	0.562	0.486	1.125	1.921	Gray	I-29	ILD-29	0.343	0.250
CLNS-4-14	#4 AWG	#6 FLEX	4-6 AWG	1/4	0.281	0.680	0.486	1.125	2.039	Gray	I-29	ILD-29	0.343	0.250
CLNS-4-516	#4 AWG	#6 FLEX	4-6 AWG	5/16	0.343	0.875	0.486	1.125	2.234	Gray	I-29	ILD-29	0.343	0.250
+CLNS-4-38	#4 AWG	#6 FLEX	4-6 AWG	3/8	0.406	0.875	0.593	1.125	2.234	Gray	I-29	ILD-29	0.343	0.250
+CLNS-4-12	#4 AWG	#6 FLEX	4-6 AWG	1/2	0.562	1.250	0.750	1.125	2.609	Gray	I-29	ILD-29	0.343	0.250
CLNS-3-10	#3 AWG	#4 FLEX	3-6 AWG	10	0.219	0.562	0.532	1.125	1.942	White	I-29	ILD-29	0.375	0.275
CLNS-3-14	#3 AWG	#4 FLEX	3-6 AWG	1/4	0.281	0.680	0.532	1.125	2.060	White	I-29	ILD-29	0.375	0.275
CLNS-3-516	#3 AWG	#4 FLEX	3-6 AWG	5/16	0.343	0.875	0.532	1.125	2.255	White	I-29	ILD-29	0.375	0.275
+CLNS-3-38	#3 AWG	#4 FLEX	3-6 AWG	3/8	0.406	0.875	0.593	1.125	2.255	White	I-29	ILD-29	0.375	0.275
+CLNS-3-12	#3 AWG	#4 FLEX	3-6 AWG	1/2	0.562	1.250	0.750	1.125	2.630	White	I-29	ILD-29	0.375	0.275
CLNS-2-10	#2 AWG	-	2-6 AWG	10	0.219	0.562	0.599	1.125	1.973	Brown	I-33	ILD-33	0.421	0.312
CLNS-2-14	#2 AWG	-	2-6 AWG	1/4	0.281	0.680	0.599	1.125	2.091	Brown	I-33	ILD-33	0.421	0.312
CLNS-2-516	#2 AWG	-	2-6 AWG	5/16	0.343	0.875	0.599	1.125	2.286	Brown	I-33	ILD-33	0.421	0.312
CLNS-2-38	#2 AWG	-	2-6 AWG	3/8	0.406	0.875	0.599	1.125	2.286	Brown	I-33	ILD-33	0.421	0.312
+CLNS-2-12	#2 AWG	-	2-6 AWG	1/2	0.562	1.250	0.750	1.125	2.661	Brown	I-33	ILD-33	0.421	0.312

+ Available 3rd quarter 2008

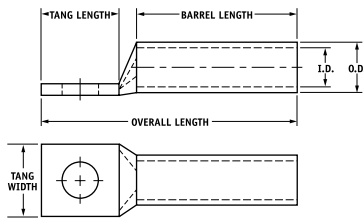
* When installed with specified dieless tools

See pages 34 to 39 for complete tooling information.

TYPE CLNS

Features

- Manufactured from high strength seamless copper tubing.
- Electro-Tin plated.
- Maximum conductivity and excellent crimping characteristics.
- Long barrel length with chamfered entry.
- Color coded.
- UL 486A 90°C Listed and CSA Certified for 600 Volts.
- If proper high voltage spacing and insulation techniques are used, may be used for high voltage applications up to 35KV.
- For Copper conductor only.
- IlSCO connectors are UL Listed and CSA Certified with ILSCO or other Manufacturers' tools.
- UL File E6207



Catalog Number	Wire Size	Alt Wire Size	Expanded* Wire Range	Bolt Size	Stud Hole Dia.	Tang Length	Tang Width	Barrel Length	Overall Length	Die Color Code	Die Index	Die Catalog Number	O.D.	I.D.
CLNS-1-10	#1 AWG	#2 FLEX	1-6 AWG	10	0.219	0.562	0.673	1.375	2.267	Green	1-37	ILD-37	0.468	0.359
CLNS-1-14	#1 AWG	#2 FLEX	1-6 AWG	1/4	0.281	0.875	0.673	1.375	2.580	Green	1-37	ILD-37	0.468	0.359
CLNS-1-516	#1 AWG	#2 FLEX	1-6 AWG	5/16	0.343	0.875	0.673	1.375	2.580	Green	1-37	ILD-37	0.468	0.359
CLNS-1-38	#1 AWG	#2 FLEX	1-6 AWG	3/8	0.406	0.875	0.673	1.375	2.580	Green	1-37	ILD-37	0.468	0.359
+CLNS-1-12	#1 AWG	#2 FLEX	1-6 AWG	1/2	0.562	1.250	0.750	1.375	2.955	Green	1-37	ILD-37	0.468	0.359
CLNS-1/0-10	1/0 AWG	#1 FLEX	1/0-6 AWG	10	0.219	0.562	0.738	1.500	2.418	Pink	1-42	ILD-42	0.515	0.390
CLNS-1/0-14	1/0 AWG	#1 FLEX	1/0-6 AWG	1/4	0.281	0.875	0.738	1.500	2.731	Pink	1-42	ILD-42	0.515	0.390
CLNS-1/0-516	1/0 AWG	#1 FLEX	1/0-6 AWG	5/16	0.343	0.875	0.738	1.500	2.731	Pink	1-42	ILD-42	0.515	0.390
CLNS-1/0-38	1/0 AWG	#1 FLEX	1/0-6 AWG	3/8	0.406	0.875	0.738	1.500	2.731	Pink	1-42	ILD-42	0.515	0.390
CLNS-1/0-12	1/0 AWG	#1 FLEX	1/0-6 AWG	1/2	0.562	1.250	0.738	1.500	3.106	Pink	1-42	ILD-42	0.515	0.390
CLNS-2/0-10	2/0 AWG	1/0 FLEX	2/0-4 AWG	10	0.219	0.562	0.811	1.500	2.458	Black	1-45	ILD-45	0.562	0.437
CLNS-2/0-14	2/0 AWG	1/0 FLEX	2/0-4 AWG	1/4	0.281	0.875	0.811	1.500	2.771	Black	1-45	ILD-45	0.562	0.437
CLNS-2/0-516	2/0 AWG	1/0 FLEX	2/0-4 AWG	5/16	0.343	0.875	0.811	1.500	2.771	Black	1-45	ILD-45	0.562	0.437
CLNS-2/0-38	2/0 AWG	1/0 FLEX	2/0-4 AWG	3/8	0.406	0.875	0.811	1.500	2.771	Black	1-45	ILD-45	0.562	0.437
CLNS-2/0-12	2/0 AWG	1/0 FLEX	2/0-4 AWG	1/2	0.562	1.250	0.811	1.500	3.146	Black	1-45	ILD-45	0.562	0.437
CLNS-3/0-10	3/0 AWG	2/0 FLEX	3/0-2 AWG	10	0.219	0.562	0.885	1.500	2.501	Orange	1-50	ILD-50	0.609	0.484
CLNS-3/0-14	3/0 AWG	2/0 FLEX	3/0-2 AWG	1/4	0.281	0.875	0.885	1.500	2.814	Orange	1-50	ILD-50	0.609	0.484
CLNS-3/0-516	3/0 AWG	2/0 FLEX	3/0-2 AWG	5/16	0.343	0.875	0.885	1.500	2.814	Orange	1-50	ILD-50	0.609	0.484
CLNS-3/0-38	3/0 AWG	2/0 FLEX	3/0-2 AWG	3/8	0.406	0.875	0.885	1.500	2.814	Orange	1-50	ILD-50	0.609	0.484
CLNS-3/0-12	3/0 AWG	2/0 FLEX	3/0-2 AWG	1/2	0.562	1.250	0.885	1.500	3.189	Orange	1-50	ILD-50	0.609	0.484
CLNS-4/0-14	4/0 AWG	3/0 FLEX	4/0-1 AWG	1/4	0.281	0.875	0.999	1.500	2.866	Purple	1-54	ILD-54	0.687	0.546
CLNS-4/0-516	4/0 AWG	3/0 FLEX	4/0-1 AWG	5/16	0.343	0.875	0.999	1.500	2.866	Purple	1-54	ILD-54	0.687	0.546
CLNS-4/0-38	4/0 AWG	3/0 FLEX	4/0-1 AWG	3/8	0.406	0.875	0.999	1.500	2.866	Purple	1-54	ILD-54	0.687	0.546
CLNS-4/0-12	4/0 AWG	3/0 FLEX	4/0-1 AWG	1/2	0.562	1.250	0.999	1.500	3.241	Purple	1-54	ILD-54	0.687	0.546
CLNS-250-516	250kcmil	4/0 FLEX	250kcmil - 1/0 AWG	5/16	0.343	0.875	1.088	1.688	3.094	Yellow	1-62	ILD-62	0.750	0.593
CLNS-250-38	250kcmil	4/0 FLEX	250kcmil - 1/0 AWG	3/8	0.406	0.875	1.088	1.688	3.094	Yellow	1-62	ILD-62	0.750	0.593
CLNS-250-12	250kcmil	4/0 FLEX	250kcmil - 1/0 AWG	1/2	0.562	1.250	1.088	1.688	3.469	Yellow	1-62	ILD-62	0.750	0.593
CLNS-300-516	300kcmil	250 G,H FLEX	300kcmil - 2/0 AWG	5/16	0.343	0.875	1.189	2.000	3.462	White	1-66	ILD-66	0.812	0.660
CLNS-300-38	300kcmil	250 G,H FLEX	300kcmil - 2/0 AWG	3/8	0.406	0.875	1.189	2.000	3.462	White	1-66	ILD-66	0.812	0.660
CLNS-300-12	300kcmil	250 G,H FLEX	300kcmil - 2/0 AWG	1/2	0.562	1.250	1.189	2.000	3.837	White	1-66	ILD-66	0.812	0.660

+ Available 3rd quarter 2008

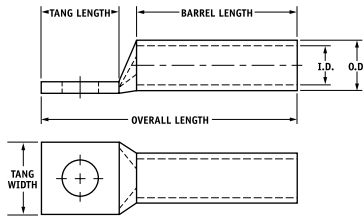
* When installed with specified dieless tools

See pages 34 to 39 for complete tooling information.

TYPE CLNS

Features

- Manufactured from high strength seamless copper tubing.
- Electro-Tin plated.
- Maximum conductivity and excellent crimping characteristics.
- Long barrel length with chamfered entry.
- Color coded.
- UL 486A 90°C Listed and CSA Certified for 600 Volts.
- If proper high voltage spacing and insulation techniques are used, may be used for high voltage applications up to 35KV.
- For Copper conductor only.
- IlSCO connectors are UL Listed and CSA Certified with ILSCO or other Manufacturers' tools.
- UL File E6207



Catalog Number	Wire Size	Alt Wire Size	Expanded* Wire Range	Bolt Size	Stud Hole Dia.	Tang Length	Tang Width	Barrel Length	Overall Length	Die Color Code	Die Index	Die Catalog Number	O.D.	I.D.
CLNS-350-38	350kcmil	250 I,K,M FLEX 262.2 DLO	350kcmil - 3/0 AWG	3/8	0.406	0.875	1.291	2.000	3.498	Red	I-71	ILD-71	0.890	0.703
CLNS-350-12	350kcmil	250 I,K,M FLEX 262.2 DLO	350kcmil - 3/0 AWG	1/2	0.562	1.250	1.291	2.000	3.873	Red	I-71	ILD-71	0.890	0.703
CLNS-350-58	350kcmil	250 I,K,M FLEX 262.2 DLO	350kcmil - 3/0 AWG	5/8	0.656	1.437	1.291	2.000	4.060	Red	I-71	ILD-71	0.890	0.703
CLNS-400-38	400kcmil	300 G,H,I,K,M FLEX 313.1 DLO	400kcmil - 4/0 AWG	3/8	0.406	0.875	1.365	2.125	3.667	Blue	I-76	ILD-76	0.937	0.750
CLNS-400-12	400kcmil	300 G,H,I,K,M FLEX 313.1 DLO	400kcmil - 4/0 AWG	1/2	0.562	1.250	1.365	2.125	4.042	Blue	I-76	ILD-76	0.937	0.750
CLNS-400-58	400kcmil	300 G,H,I,K,M FLEX 313.1 DLO	400kcmil - 4/0 AWG	5/8	0.656	1.437	1.365	2.125	4.229	Blue	I-76	ILD-76	0.937	0.750
CLNS-500-38	500kcmil	350 G,H,I,K,M FLEX 373.7 DLO	500kcmil - 250kcmil	3/8	0.406	0.875	1.535	2.250	3.857	Brown	I-87	ILD-87	1.062	0.828
CLNS-500-12	500kcmil	350 G,H,I,K,M FLEX 373.7 DLO	500kcmil - 250kcmil	1/2	0.562	1.250	1.535	2.250	4.232	Brown	I-87	ILD-87	1.062	0.828
CLNS-500-58	500kcmil	350 G,H,I,K,M FLEX 373.7 DLO	500kcmil - 250kcmil	5/8	0.656	1.437	1.535	2.250	4.419	Brown	I-87	ILD-87	1.062	0.828
CLNS-600-38	600kcmil	400 G,H,I,K,M FLEX 444.4 DLO	600kcmil - 250kcmil	3/8	0.406	0.875	1.712	2.687	4.371	Green	I-94	ILD-94	1.187	0.920
CLNS-600-12	600kcmil	400 G,H,I,K,M FLEX 444.4 DLO	600kcmil - 250kcmil	1/2	0.562	1.250	1.712	2.687	4.746	Green	I-94	ILD-94	1.187	0.920
CLNS-600-58	600kcmil	400 G,H,I,K,M FLEX 444.4 DLO	600kcmil - 250kcmil	5/8	0.656	1.437	1.712	2.687	4.933	Green	I-94	ILD-94	1.187	0.920
CLNS-700-38	700kcmil	500 G,H,I,K,M FLEX 535.3 DLO	700kcmil - 350kcmil	3/8	0.406	0.875	1.816	2.687	4.431	Pink	I-99	ILD-99	1.250	0.991
CLNS-700-12	700kcmil	500 G,H,I,K,M FLEX 535.3 DLO	700kcmil - 350kcmil	1/2	0.562	1.250	1.816	2.687	4.806	Pink	I-99	ILD-99	1.250	0.991
CLNS-700-58	700kcmil	500 G,H,I,K,M FLEX 535.3 DLO	700kcmil - 350kcmil	5/8	0.656	1.437	1.816	2.687	4.993	Pink	I-99	ILD-99	1.250	0.991
CLNS-750-38	750kcmil	600 G,H,I,K,M FLEX 646.4 DLO	750kcmil - 500kcmil	3/8	0.406	0.875	1.901	2.875	4.652	Black	I-106	ILD-106	1.313	1.031
CLNS-750-12	750kcmil	600 G,H,I,K,M FLEX 646.4 DLO	750kcmil - 500kcmil	1/2	0.562	1.250	1.901	2.875	5.027	Black	I-106	ILD-106	1.313	1.031
CLNS-750-58	750kcmil	600 G,H,I,K,M FLEX 646.4 DLO	750kcmil - 500kcmil	5/8	0.656	1.437	1.901	2.875	5.214	Black	I-106	ILD-106	1.313	1.031
CLNS-1000-38	1000kcmil	750 G,H,I FLEX 777.7 DLO	1000kcmil - 750kcmil	3/8	0.406	0.875	2.169	3.000	4.900	White	I-125	ILD-125	1.500	1.172
CLNS-1000-12	1000kcmil	750 G,H,I FLEX 777.7 DLO	1000kcmil - 750kcmil	1/2	0.562	1.250	2.169	3.000	5.275	White	I-125	ILD-125	1.500	1.172
CLNS-1000-58	1000kcmil	750 G,H,I FLEX 777.7 DLO	1000kcmil - 750kcmil	5/8	0.656	1.437	2.169	3.000	5.462	White	I-125	ILD-125	1.500	1.172

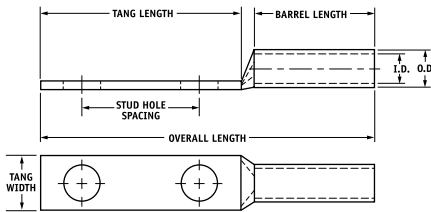
* When installed with specified dieless tools

See pages 34 to 39 for complete tooling information.

TYPE CLWD

Features

- Manufactured from high strength seamless copper tubing.
- Electro-Tin plated.
- Maximum conductivity and excellent crimping characteristics.
- Long barrel length with chamfered entry.
- Color coded.
- UL 486A 90°C Listed and CSA Certified for 600 Volts.
- If proper high voltage spacing and insulation techniques are used, may be used for high voltage applications up to 35KV.
- For Copper conductor only.
- IlSCO connectors are UL Listed and CSA Certified with ILSCO or other Manufacturers' tools.
- UL File E6207



Catalog Number	Wire Size	Alt Wire Size	Expanded* Wire Range	Bolt Size	Stud Hole Dia.	Stud Hole Spacing	Tang Length	Tang Width	Barrel Length	Overall Length	Die Color Code	Die Index	Die Catalog Number	O.D.	I.D.
CLWD-8-10-58	#8 AWG	#8 FLEX	-	10	0.219	0.625	1.250	0.374	0.812	2.257	Red	I-21	ILD-21	0.272	0.179
CLWD-8-10-34	#8 AWG	#8 FLEX	-	10	0.219	0.750	1.437	0.374	0.812	2.444	Red	I-21	ILD-21	0.272	0.179
+CLWD-8-14-58	#8 AWG	#8 FLEX	-	1/4	0.281	0.625	1.437	0.486	0.812	2.444	Red	I-21	ILD-21	0.272	0.179
+CLWD-8-14-34	#8 AWG	#8 FLEX	-	1/4	0.281	0.750	1.437	0.486	0.812	2.444	Red	I-21	ILD-21	0.272	0.179
+CLWD-8-14-1	#8 AWG	#8 FLEX	-	1/4	0.281	1.000	1.687	0.486	0.812	2.694	Red	I-21	ILD-21	0.272	0.179
+CLWD-8-38-1	#8 AWG	#8 FLEX	-	3/8	0.406	1.000	1.937	0.593	0.812	2.944	Red	I-21	ILD-21	0.272	0.179
CLWD-6-10-12	#6 AWG	-	-	10	0.219	0.500	1.250	0.411	1.125	2.570	Blue	I-24	ILD-24	0.295	0.203
CLWD-6-10-58	#6 AWG	-	-	10	0.219	0.625	1.250	0.411	1.125	2.570	Blue	I-24	ILD-24	0.295	0.203
CLWD-6-10-1116	#6 AWG	-	-	10	0.219	0.687	1.250	0.411	1.125	2.570	Blue	I-24	ILD-24	0.295	0.203
CLWD-6-10-34	#6 AWG	-	-	10	0.219	0.750	1.437	0.411	1.125	2.757	Blue	I-24	ILD-24	0.295	0.203
CLWD-6-14-12	#6 AWG	-	-	1/4	0.281	0.500	1.250	0.411	1.125	2.570	Blue	I-24	ILD-24	0.295	0.203
CLWD-6-14-58	#6 AWG	-	-	1/4	0.281	0.625	1.437	0.411	1.125	2.757	Blue	I-24	ILD-24	0.295	0.203
CLWD-6-14-34	#6 AWG	-	-	1/4	0.281	0.750	1.437	0.411	1.125	2.757	Blue	I-24	ILD-24	0.295	0.203
CLWD-6-14-1	#6 AWG	-	-	1/4	0.281	1.000	1.687	0.411	1.125	3.007	Blue	I-24	ILD-24	0.295	0.203
+CLWD-6-516-34	#6 AWG	-	-	5/16	0.343	0.750	1.687	0.532	1.125	3.007	Blue	I-24	ILD-24	0.295	0.203
+CLWD-6-516-1	#6 AWG	-	-	5/16	0.343	1.000	1.937	0.532	1.125	3.257	Blue	I-24	ILD-24	0.295	0.203
CLWD-6-38-34	#6 AWG	-	-	3/8	0.406	0.750	1.687	0.593	1.125	3.007	Blue	I-24	ILD-24	0.295	0.203
CLWD-6-38-78	#6 AWG	-	-	3/8	0.406	0.875	1.937	0.593	1.125	3.257	Blue	I-24	ILD-24	0.295	0.203
CLWD-6-38-1	#6 AWG	-	-	3/8	0.406	1.000	1.937	0.593	1.125	3.257	Blue	I-24	ILD-24	0.295	0.203
+CLWD-6-12-134	#6 AWG	-	-	1/2	0.562	1.750	3.000	0.750	1.125	4.320	Blue	I-24	ILD-24	0.295	0.203

+ Available 3rd quarter 2008

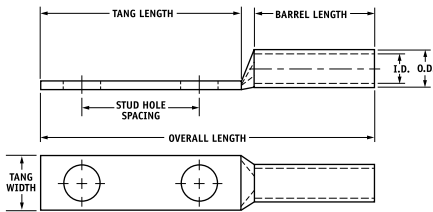
* When installed with specified dieless tools

See pages 34 to 39 for complete tooling information.

TYPE CLWD

Features

- Manufactured from high strength seamless copper tubing.
- Electro-Tin plated.
- Maximum conductivity and excellent crimping characteristics.
- Long barrel length with chamfered entry.
- Color coded.
- UL 486A 90°C Listed and CSA Certified for 600 Volts.
- If proper high voltage spacing and insulation techniques are used, may be used for high voltage applications up to 35KV.
- For Copper conductor only.
- IlSCO connectors are UL Listed and CSA Certified with ILSCO or other Manufacturers' tools.
- UL File E6207



Catalog Number	Wire Size	Alt Wire Size	Expanded* Wire Range	Bolt Size	Stud Hole Dia.	Stud Hole Spacing	Tang Length	Tang Width	Barrel Length	Overall Length	Die Color Code	Die Index	Die Catalog Number	O.D.	I.D.
CLWD-4-10-58	#4 AWG	#6 FLEX	4-6 AWG	10	0.219	0.625	1.250	0.486	1.125	2.609	Gray	I-29	ILD-29	0.343	0.250
CLWD-4-10-34	#4 AWG	#6 FLEX	4-6 AWG	10	0.219	0.750	1.437	0.486	1.125	2.796	Gray	I-29	ILD-29	0.343	0.250
CLWD-4-10-1	#4 AWG	#6 FLEX	4-6 AWG	10	0.219	1.000	1.687	0.486	1.125	3.046	Gray	I-29	ILD-29	0.343	0.250
CLWD-4-14-58	#4 AWG	#6 FLEX	4-6 AWG	1/4	0.281	0.625	1.437	0.486	1.125	2.796	Gray	I-29	ILD-29	0.343	0.250
CLWD-4-14-34	#4 AWG	#6 FLEX	4-6 AWG	1/4	0.281	0.750	1.437	0.486	1.125	2.796	Gray	I-29	ILD-29	0.343	0.250
CLWD-4-14-1	#4 AWG	#6 FLEX	4-6 AWG	1/4	0.281	1.000	1.687	0.486	1.125	3.046	Gray	I-29	ILD-29	0.343	0.250
CLWD-4-516-58	#4 AWG	#6 FLEX	4-6 AWG	5/16	0.343	0.625	1.437	0.486	1.125	2.796	Gray	I-29	ILD-29	0.343	0.250
CLWD-4-516-34	#4 AWG	#6 FLEX	4-6 AWG	5/16	0.343	0.750	1.687	0.486	1.125	3.046	Gray	I-29	ILD-29	0.343	0.250
CLWD-4-516-1	#4 AWG	#6 FLEX	4-6 AWG	5/16	0.343	1.000	1.937	0.486	1.125	3.296	Gray	I-29	ILD-29	0.343	0.250
CLWD-4-38-34	#4 AWG	#6 FLEX	4-6 AWG	3/8	0.406	0.750	1.687	0.593	1.125	3.046	Gray	I-29	ILD-29	0.343	0.250
CLWD-4-38-1	#4 AWG	#6 FLEX	4-6 AWG	3/8	0.406	1.000	1.937	0.593	1.125	3.296	Gray	I-29	ILD-29	0.343	0.250
CLWD-4-12-134	#4 AWG	#6 FLEX	4-6 AWG	1/2	0.562	1.750	3.000	0.750	1.125	4.359	Gray	I-29	ILD-29	0.343	0.250
CLWD-3-14-58	#3 AWG	#4 FLEX	3-6 AWG	1/4	0.281	0.625	1.437	0.532	1.125	2.817	White	I-29	ILD-29	0.375	0.275
CLWD-3-14-34	#3 AWG	#4 FLEX	3-6 AWG	1/4	0.281	0.750	1.437	0.532	1.125	2.817	White	I-29	ILD-29	0.375	0.275
CLWD-3-516-58	#3 AWG	#4 FLEX	3-6 AWG	5/16	0.343	0.625	1.437	0.532	1.125	2.817	White	I-29	ILD-29	0.375	0.275
CLWD-3-516-1	#3 AWG	#4 FLEX	3-6 AWG	5/16	0.343	1.000	1.937	0.532	1.125	3.317	White	I-29	ILD-29	0.375	0.275
+CLWD-3-38-34	#3 AWG	#4 FLEX	3-6 AWG	3/8	0.406	0.750	1.687	0.593	1.125	3.067	White	I-29	ILD-29	0.375	0.275
CLWD-3-38-1	#3 AWG	#4 FLEX	3-6 AWG	3/8	0.406	1.000	1.937	0.593	1.125	3.317	White	I-29	ILD-29	0.375	0.275
+CLWD-3-12-134	#3 AWG	#4 FLEX	3-6 AWG	1/2	0.562	1.750	3.000	0.750	1.125	4.380	White	I-29	ILD-29	0.375	0.275

+ Available 3rd quarter 2008

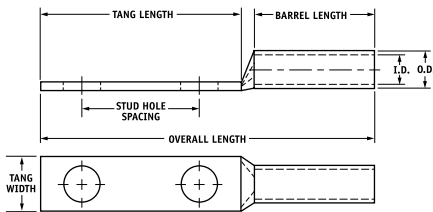
* When installed with specified dieless tools

See pages 34 to 39 for complete tooling information.

TYPE CLWD

Features

- Manufactured from high strength seamless copper tubing.
- Electro-Tin plated.
- Maximum conductivity and excellent crimping characteristics.
- Long barrel length with chamfered entry.
- Color coded.
- UL 486A 90°C Listed and CSA Certified for 600 Volts.
- If proper high voltage spacing and insulation techniques are used, may be used for high voltage applications up to 35KV.
- For Copper conductor only.
- IlSCO connectors are UL Listed and CSA Certified with ILSCO or other Manufacturers' tools.
- UL File E6207



Catalog Number	Wire Size	Alt Wire Size	Expanded* Wire Range	Bolt Size	Stud Hole Dia.	Stud Hole Spacing	Tang Length	Tang Width	Barrel Length	Overall Length	Die Color Code	Die Index	Die Catalog Number	O.D.	I.D.
CLWD-2-10-34	#2 AWG	-	2-6 AWG	10	0.219	0.750	1.437	0.599	1.125	2.848	Brown	I-33	ILD-33	0.421	0.312
CLWD-2-14-58	#2 AWG	-	2-6 AWG	1/4	0.281	0.625	1.437	0.599	1.125	2.848	Brown	I-33	ILD-33	0.421	0.312
CLWD-2-14-34	#2 AWG	-	2-6 AWG	1/4	0.281	0.750	1.437	0.599	1.125	2.848	Brown	I-33	ILD-33	0.421	0.312
CLWD-2-14-1	#2 AWG	-	2-6 AWG	1/4	0.281	1.000	1.687	0.599	1.125	3.098	Brown	I-33	ILD-33	0.421	0.312
CLWD-2-516-58	#2 AWG	-	2-6 AWG	5/16	0.343	0.625	1.687	0.599	1.125	3.098	Brown	I-33	ILD-33	0.421	0.312
CLWD-2-516-34	#2 AWG	-	2-6 AWG	5/16	0.343	0.750	1.687	0.599	1.125	3.098	Brown	I-33	ILD-33	0.421	0.312
CLWD-2-516-1	#2 AWG	-	2-6 AWG	5/16	0.343	1.000	1.937	0.599	1.125	3.348	Brown	I-33	ILD-33	0.421	0.312
CLWD-2-38-58	#2 AWG	-	2-6 AWG	3/8	0.406	0.625	1.687	0.599	1.125	3.098	Brown	I-33	ILD-33	0.421	0.312
CLWD-2-38-34	#2 AWG	-	2-6 AWG	3/8	0.406	0.750	1.687	0.599	1.125	3.098	Brown	I-33	ILD-33	0.421	0.312
CLWD-2-38-78	#2 AWG	-	2-6 AWG	3/8	0.406	0.875	1.937	0.599	1.125	3.348	Brown	I-33	ILD-33	0.421	0.312
CLWD-2-38-1	#2 AWG	-	2-6 AWG	3/8	0.406	1.000	1.937	0.599	1.125	3.348	Brown	I-33	ILD-33	0.421	0.312
CLWD-2-38-134	#2 AWG	-	2-6 AWG	3/8	0.406	1.750	2.625	0.599	1.125	4.036	Brown	I-33	ILD-33	0.421	0.312
CLWD-2-12-134	#2 AWG	-	2-6 AWG	1/2	0.562	1.750	3.000	0.750	1.125	4.411	Brown	I-33	ILD-33	0.421	0.312
CLWD-1-14-58	#1 AWG	#2 FLEX	1-6 AWG	1/4	0.281	0.625	1.437	0.673	1.375	3.142	Green	I-37	ILD-37	0.468	0.359
CLWD-1-14-34	#1 AWG	#2 FLEX	1-6 AWG	1/4	0.281	0.750	1.437	0.673	1.375	3.142	Green	I-37	ILD-37	0.468	0.359
CLWD-1-14-1	#1 AWG	#2 FLEX	1-6 AWG	1/4	0.281	1.000	1.687	0.673	1.375	3.392	Green	I-37	ILD-37	0.468	0.359
CLWD-1-516-78	#1 AWG	#2 FLEX	1-6 AWG	5/16	0.343	0.875	1.687	0.673	1.375	3.392	Green	I-37	ILD-37	0.468	0.359
CLWD-1-516-1	#1 AWG	#2 FLEX	1-6 AWG	5/16	0.343	1.000	1.937	0.673	1.375	3.642	Green	I-37	ILD-37	0.468	0.359
CLWD-1-38-1	#1 AWG	#2 FLEX	1-6 AWG	3/8	0.406	1.000	1.937	0.673	1.375	3.642	Green	I-37	ILD-37	0.468	0.359
CLWD-1-12-134	#1 AWG	#2 FLEX	1-6 AWG	1/2	0.562	1.750	3.000	0.750	1.375	4.705	Green	I-37	ILD-37	0.468	0.359
CLWD-1/0-14-58	1/0 AWG	#1 FLEX	1/0-6 AWG	1/4	0.281	0.625	1.437	0.738	1.500	3.293	Pink	I-42	ILD-42	0.515	0.390
CLWD-1/0-14-34	1/0 AWG	#1 FLEX	1/0-6 AWG	1/4	0.281	0.750	1.437	0.738	1.500	3.293	Pink	I-42	ILD-42	0.515	0.390
CLWD-1/0-14-1	1/0 AWG	#1 FLEX	1/0-6 AWG	1/4	0.281	1.000	1.687	0.738	1.500	3.543	Pink	I-42	ILD-42	0.515	0.390
CLWD-1/0-516-34	1/0 AWG	#1 FLEX	1/0-6 AWG	5/16	0.343	0.750	1.687	0.738	1.500	3.543	Pink	I-42	ILD-42	0.515	0.390
CLWD-1/0-516-78	1/0 AWG	#1 FLEX	1/0-6 AWG	5/16	0.343	0.875	1.687	0.738	1.500	3.543	Pink	I-42	ILD-42	0.515	0.390
CLWD-1/0-516-1	1/0 AWG	#1 FLEX	1/0-6 AWG	5/16	0.343	1.000	1.937	0.738	1.500	3.793	Pink	I-42	ILD-42	0.515	0.390
CLWD-1/0-38-1	1/0 AWG	#1 FLEX	1/0-6 AWG	3/8	0.406	1.000	1.937	0.738	1.500	3.793	Pink	I-42	ILD-42	0.515	0.390
CLWD-1/0-38-134	1/0 AWG	#1 FLEX	1/0-6 AWG	3/8	0.406	1.750	2.625	0.738	1.500	4.481	Pink	I-42	ILD-42	0.515	0.390
CLWD-1/0-12-1	1/0 AWG	#1 FLEX	1/0-6 AWG	1/2	0.562	1.000	2.125	0.738	1.500	3.981	Pink	I-42	ILD-42	0.515	0.390
CLWD-1/0-12-134	1/0 AWG	#1 FLEX	1/0-6 AWG	1/2	0.562	1.750	3.000	0.738	1.500	4.856	Pink	I-42	ILD-42	0.515	0.390

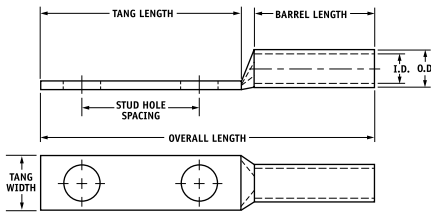
* When installed with specified dieless tools

See pages 34 to 39 for complete tooling information.

TYPE CLWD

Features

- Manufactured from high strength seamless copper tubing.
- Electro-Tin plated.
- Maximum conductivity and excellent crimping characteristics.
- Long barrel length with chamfered entry.
- Color coded.
- UL 486A 90°C Listed and CSA Certified for 600 Volts.
- If proper high voltage spacing and insulation techniques are used, may be used for high voltage applications up to 35KV.
- For Copper conductor only.
- IlSCO connectors are UL Listed and CSA Certified with ILSCO or other Manufacturers' tools.
- UL File E6207



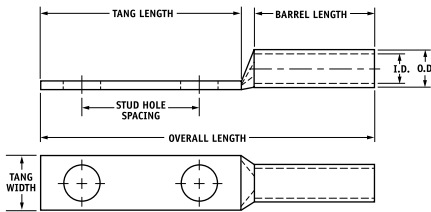
Catalog Number	Wire Size	Alt Wire Size	Expanded* Wire Range	Bolt Size	Stud Hole Dia.	Stud Hole Spacing	Tang Length	Tang Width	Barrel Length	Overall Length	Die Color Code	Die Index	Die Catalog Number	O.D.	I.D.
CLWD-2/0-14-58	2/0 AWG	1/0 FLEX	2/0-4 AWG	1/4	0.281	0.625	1.437	0.811	1.500	3.333	Black	I-45	ILD-45	0.562	0.437
CLWD-2/0-14-34	2/0 AWG	1/0 FLEX	2/0-4 AWG	1/4	0.281	0.750	1.437	0.811	1.500	3.333	Black	I-45	ILD-45	0.562	0.437
CLWD-2/0-14-1	2/0 AWG	1/0 FLEX	2/0-4 AWG	1/4	0.281	1.000	1.687	0.811	1.500	3.583	Black	I-45	ILD-45	0.562	0.437
CLWD-2/0-516-1	2/0 AWG	1/0 FLEX	2/0-4 AWG	5/16	0.343	1.000	1.937	0.811	1.500	3.833	Black	I-45	ILD-45	0.562	0.437
CLWD-2/0-38-1	2/0 AWG	1/0 FLEX	2/0-4 AWG	3/8	0.406	1.000	1.937	0.811	1.500	3.833	Black	I-45	ILD-45	0.562	0.437
CLWD-2/0-38-134	2/0 AWG	1/0 FLEX	2/0-4 AWG	3/8	0.406	1.750	2.625	0.811	1.500	4.521	Black	I-45	ILD-45	0.562	0.437
CLWD-2/0-12-1	2/0 AWG	1/0 FLEX	2/0-4 AWG	1/2	0.562	1.000	2.125	0.811	1.500	4.021	Black	I-45	ILD-45	0.562	0.437
CLWD-2/0-12-134	2/0 AWG	1/0 FLEX	2/0-4 AWG	1/2	0.562	1.750	3.000	0.811	1.500	4.896	Black	I-45	ILD-45	0.562	0.437
CLWD-3/0-14-58	3/0 AWG	2/0 FLEX	3/0-2 AWG	1/4	0.281	0.625	1.437	0.885	1.500	3.376	Orange	I-50	ILD-50	0.609	0.484
CLWD-3/0-14-34	3/0 AWG	2/0 FLEX	3/0-2 AWG	1/4	0.281	0.750	1.437	0.885	1.500	3.376	Orange	I-50	ILD-50	0.609	0.484
CLWD-3/0-516-1	3/0 AWG	2/0 FLEX	3/0-2 AWG	5/16	0.343	1.000	1.937	0.885	1.500	3.876	Orange	I-50	ILD-50	0.609	0.484
CLWD-3/0-38-1	3/0 AWG	2/0 FLEX	3/0-2 AWG	3/8	0.406	1.000	1.937	0.885	1.500	3.876	Orange	I-50	ILD-50	0.609	0.484
CLWD-3/0-12-134	3/0 AWG	2/0 FLEX	3/0-2 AWG	1/2	0.562	1.750	3.000	0.885	1.500	4.939	Orange	I-50	ILD-50	0.609	0.484
CLWD-4/0-14-58	4/0 AWG	3/0 FLEX	4/0-1 AWG	1/4	0.281	0.625	1.437	0.999	1.500	3.428	Purple	I-54	ILD-54	0.687	0.546
CLWD-4/0-14-34	4/0 AWG	3/0 FLEX	4/0-1 AWG	1/4	0.281	0.750	1.437	0.999	1.500	3.428	Purple	I-54	ILD-54	0.687	0.546
CLWD-4/0-14-1	4/0 AWG	3/0 FLEX	4/0-1 AWG	1/4	0.281	1.000	1.687	0.999	1.500	3.678	Purple	I-54	ILD-54	0.687	0.546
CLWD-4/0-516-34	4/0 AWG	3/0 FLEX	4/0-1 AWG	5/16	0.343	0.750	1.687	0.999	1.500	3.678	Purple	I-54	ILD-54	0.687	0.546
CLWD-4/0-516-1	4/0 AWG	3/0 FLEX	4/0-1 AWG	5/16	0.343	1.000	1.937	0.999	1.500	3.928	Purple	I-54	ILD-54	0.687	0.546
CLWD-4/0-516-134	4/0 AWG	3/0 FLEX	4/0-1 AWG	5/16	0.343	1.750	2.500	0.999	1.500	4.491	Purple	I-54	ILD-54	0.687	0.546
CLWD-4/0-38-1	4/0 AWG	3/0 FLEX	4/0-1 AWG	3/8	0.406	1.000	1.937	0.999	1.500	3.928	Purple	I-54	ILD-54	0.687	0.546
CLWD-4/0-38-134	4/0 AWG	3/0 FLEX	4/0-1 AWG	3/8	0.406	1.750	2.625	0.999	1.500	4.616	Purple	I-54	ILD-54	0.687	0.546
CLWD-4/0-12-1	4/0 AWG	3/0 FLEX	4/0-1 AWG	1/2	0.562	1.000	2.125	0.999	1.500	4.116	Purple	I-54	ILD-54	0.687	0.546
CLWD-4/0-12-114	4/0 AWG	3/0 FLEX	4/0-1 AWG	1/2	0.562	1.250	2.500	0.999	1.500	4.491	Purple	I-54	ILD-54	0.687	0.546
CLWD-4/0-12-134	4/0 AWG	3/0 FLEX	4/0-1 AWG	1/2	0.562	1.750	3.000	0.999	1.500	4.991	Purple	I-54	ILD-54	0.687	0.546

* When installed with specified dieless tools
See pages 34 to 39 for complete tooling information.

TYPE CLWD

Features

- Manufactured from high strength seamless copper tubing.
- Electro-Tin plated.
- Maximum conductivity and excellent crimping characteristics.
- Long barrel length with chamfered entry.
- Color coded.
- UL 486A 90°C Listed and CSA Certified for 600 Volts.
- If proper high voltage spacing and insulation techniques are used, may be used for high voltage applications up to 35KV.
- For Copper conductor only.
- IlSCO connectors are UL Listed and CSA Certified with ILSCO or other Manufacturers' tools.
- UL File E6207



Catalog Number	Wire Size	Alt Wire Size	Expanded* Wire Range	Bolt Size	Stud Hole Dia.	Stud Hole Spacing	Tang Length	Tang Width	Barrel Length	Overall Length	Die Color Code	Die Index	Die Catalog Number	O.D.	I.D.
CLWD-250-14-34	250kcmil	4/0 FLEX	250kcmil - 1/0 AWG	1/4	0.281	0.750	1.437	1.088	1.688	3.656	Yellow	I-62	ILD-62	0.750	0.593
CLWD-250-38-1	250kcmil	4/0 FLEX	250kcmil - 1/0 AWG	3/8	0.406	1.000	1.937	1.088	1.688	4.156	Yellow	I-62	ILD-62	0.750	0.593
CLWD-250-38-134	250kcmil	4/0 FLEX	250kcmil - 1/0 AWG	3/8	0.406	1.750	2.625	1.088	1.688	4.844	Yellow	I-62	ILD-62	0.750	0.593
CLWD-250-12-114	250kcmil	4/0 FLEX	250kcmil - 1/0 AWG	1/2	0.562	1.250	2.500	1.088	1.688	4.719	Yellow	I-62	ILD-62	0.750	0.593
CLWD-250-12-134	250kcmil	4/0 FLEX	250kcmil - 1/0 AWG	1/2	0.562	1.750	3.000	1.088	1.688	5.219	Yellow	I-62	ILD-62	0.750	0.593
CLWD-300-38-1	300kcmil	250 G,H FLEX	300kcmil - 2/0 AWG	3/8	0.406	1.000	1.937	1.189	2.000	4.524	White	I-66	ILD-66	0.812	0.660
CLWD-300-12-134	300kcmil	250 G,H FLEX	300kcmil - 2/0 AWG	1/2	0.562	1.750	3.000	1.189	2.000	5.587	White	I-66	ILD-66	0.812	0.660
CLWD-350-14-34	350kcmil	250 I,K,M FLEX 262.2 DLO	350kcmil - 3/0 AWG	1/4	0.281	0.750	1.437	1.291	2.000	4.060	Red	I-71	ILD-71	0.890	0.703
CLWD-350-516-134	350kcmil	250 I,K,M FLEX 262.2 DLO	350kcmil - 3/0 AWG	5/16	0.343	1.750	2.500	1.291	2.000	5.123	Red	I-71	ILD-71	0.890	0.703
CLWD-350-38-1	350kcmil	250 I,K,M FLEX 262.2 DLO	350kcmil - 3/0 AWG	3/8	0.406	1.000	1.937	1.291	2.000	4.560	Red	I-71	ILD-71	0.890	0.703
CLWD-350-12-114	350kcmil	250 I,K,M FLEX 262.2 DLO	350kcmil - 3/0 AWG	1/2	0.562	1.250	2.500	1.291	2.000	5.123	Red	I-71	ILD-71	0.890	0.703
CLWD-350-12-134	350kcmil	250 I,K,M FLEX 262.2 DLO	350kcmil - 3/0 AWG	1/2	0.562	1.750	3.000	1.291	2.000	5.623	Red	I-71	ILD-71	0.890	0.703
CLWD-400-38-1	400kcmil	300 G,H,I,K,M FLEX 313.1 DLO	400kcmil - 4/0 AWG	3/8	0.406	1.000	1.937	1.365	2.125	4.729	Blue	I-76	ILD-76	0.937	0.750
CLWD-400-38-116	400kcmil	300 G,H,I,K,M FLEX 313.1 DLO	400kcmil - 4/0 AWG	3/8	0.406	1.062	1.937	1.365	2.125	4.729	Blue	I-76	ILD-76	0.937	0.750
CLWD-400-12-134	400kcmil	300 G,H,I,K,M FLEX 313.1 DLO	400kcmil - 4/0 AWG	1/2	0.562	1.750	3.000	1.365	2.125	5.792	Blue	I-76	ILD-76	0.937	0.750
CLWD-500-14-34	500kcmil	350 G,H,I,K,M FLEX 373.7 DLO	500kcmil - 250kcmil	1/4	0.281	0.750	1.437	1.535	2.250	4.419	Brown	I-87	ILD-87	1.062	0.828
CLWD-500-38-1	500kcmil	350 G,H,I,K,M FLEX 373.7 DLO	500kcmil - 250kcmil	3/8	0.406	1.000	1.937	1.535	2.250	4.919	Brown	I-87	ILD-87	1.062	0.828
CLWD-500-12-114	500kcmil	350 G,H,I,K,M FLEX 373.7 DLO	500kcmil - 250kcmil	1/2	0.562	1.250	2.500	1.535	2.250	5.482	Brown	I-87	ILD-87	1.062	0.828
CLWD-500-12-134	500kcmil	350 G,H,I,K,M FLEX 373.7 DLO	500kcmil - 250kcmil	1/2	0.562	1.750	3.000	1.535	2.250	5.982	Brown	I-87	ILD-87	1.062	0.828

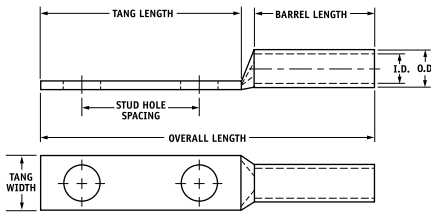
* When installed with specified dieless tools

See pages 34 to 39 for complete tooling information.

TYPE CLWD

Features

- Manufactured from high strength seamless copper tubing.
- Electro-Tin plated.
- Maximum conductivity and excellent crimping characteristics.
- Long barrel length with chamfered entry.
- Color coded.
- UL 486A 90°C Listed and CSA Certified for 600 Volts.
- If proper high voltage spacing and insulation techniques are used, may be used for high voltage applications up to 35KV.
- For Copper conductor only.
- IlSCO connectors are UL Listed and CSA Certified with ILSCO or other Manufacturers' tools.
- UL File E6207



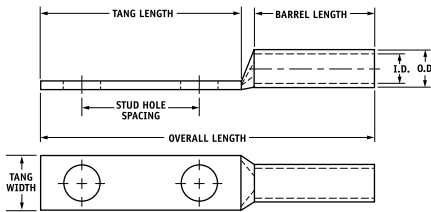
Catalog Number	Wire Size	Alt Wire Size	Expanded* Wire Range	Bolt Size	Stud Hole Dia.	Stud Hole Spacing	Tang Length	Tang Width	Barrel Length	Overall Length	Die Color Code	Die Index	Die Catalog Number	O.D.	I.D.
CLWD-600-38-1	600kcmil	400 G,H,I,K,M FLEX 444.4 DLO	600kcmil - 250kcmil	3/8	0.406	1.000	1.937	1.712	2.687	5.433	Green	I-94	ILD-94	1.187	0.920
CLWD-600-12-134	600kcmil	400 G,H,I,K,M FLEX 444.4 DLO	600kcmil - 250kcmil	1/2	0.562	1.750	3.000	1.712	2.687	6.496	Green	I-94	ILD-94	1.187	0.920
CLWD-700-38-1	700kcmil	500 G,H,I,K,M FLEX 535.3 DLO	700kcmil - 350kcmil	3/8	0.406	1.000	1.937	1.816	2.687	5.493	Pink	I-99	ILD-99	1.250	0.991
CLWD-700-38-118	700kcmil	500 G,H,I,K,M FLEX 535.3 DLO	700kcmil - 350kcmil	3/8	0.406	1.125	2.125	1.816	2.687	5.681	Pink	I-99	ILD-99	1.250	0.991
CLWD-700-12-112	700kcmil	500 G,H,I,K,M FLEX 535.3 DLO	700kcmil - 350kcmil	1/2	0.562	1.500	2.625	1.816	2.687	6.181	Pink	I-99	ILD-99	1.250	0.991
CLWD-700-12-134	700kcmil	500 G,H,I,K,M FLEX 535.3 DLO	700kcmil - 350kcmil	1/2	0.562	1.750	3.000	1.816	2.687	6.556	Pink	I-99	ILD-99	1.250	0.991
CLWD-700-12-178	700kcmil	500 G,H,I,K,M FLEX 535.3 DLO	700kcmil - 350kcmil	1/2	0.562	1.875	3.000	1.816	2.687	6.556	Pink	I-99	ILD-99	1.250	0.991
CLWD-750-38-1	750kcmil	600 G,H,I,M FLEX 646.4 DLO	750kcmil - 500kcmil	3/8	0.406	1.000	1.937	1.901	2.875	5.714	Black	I-106	ILD-106	1.313	1.031
CLWD-750-38-118	750kcmil	600 G,H,I,M FLEX 646.4 DLO	750kcmil - 500kcmil	3/8	0.406	1.125	2.125	1.901	2.875	5.902	Black	I-106	ILD-106	1.313	1.031
CLWD-750-12-112	750kcmil	600 G,H,I,M FLEX 646.4 DLO	750kcmil - 500kcmil	1/2	0.562	1.500	2.625	1.901	2.875	6.402	Black	I-106	ILD-106	1.313	1.031
CLWD-750-12-134	750kcmil	600 G,H,I,M FLEX 646.4 DLO	750kcmil - 500kcmil	1/2	0.562	1.750	3.000	1.901	2.875	6.777	Black	I-106	ILD-106	1.313	1.031
CLWD-750-58-112	750kcmil	600 G,H,I,M FLEX 646.4 DLO	750kcmil - 500kcmil	5/8	0.562	1.500	3.000	1.901	2.875	6.777	Black	I-106	ILD-106	1.313	1.031
CLWD-1000-38-1	1000kcmil	750 G,H,I FLEX 777.7 DLO	1000kcmil - 750kcmil	3/8	0.406	1.000	1.937	2.169	3.000	5.962	White	I-125	ILD-125	1.500	1.172
CLWD-1000-12-114	1000kcmil	750 G,H,I FLEX 777.7 DLO	1000kcmil - 750kcmil	1/2	0.562	1.250	2.500	2.169	3.000	6.525	White	I-125	ILD-125	1.500	1.172
CLWD-1000-12-134	1000kcmil	750 G,H,I FLEX 777.7 DLO	1000kcmil - 750kcmil	1/2	0.562	1.750	3.000	2.169	3.000	7.025	White	I-125	ILD-125	1.500	1.172
CLWD-1000-58-112	1000kcmil	750 G,H,I FLEX 777.7 DLO	1000kcmil - 750kcmil	5/8	0.562	1.500	3.000	2.169	3.000	7.025	White	I-125	ILD-125	1.500	1.172

* When installed with specified dieless tools
See pages 34 to 39 for complete tooling information.

TYPE CLND

Features

- Manufactured from high strength seamless copper tubing.
- Electro-Tin plated.
- Maximum conductivity and excellent crimping characteristics.
- Long barrel length with chamfered entry.
- Color coded.
- UL 486A 90°C Listed and CSA Certified for 600 Volts.
- If proper high voltage spacing and insulation techniques are used, may be used for high voltage applications up to 35KV.
- For Copper conductor only.
- IlSCO connectors are UL Listed and CSA Certified with ILSCO or other Manufacturers' tools.
- UL File E6207



Catalog Number	Wire Size	Alt Wire Size	Expanded* Wire Range	Bolt Size	Stud Hole Dia.	Stud Hole Spacing	Tang Length	Tang Width	Barrel Length	Overall Length	Die Color Code	Die Index	Die Catalog Number	O.D.	I.D.
CLND-8-10-58	#8 AWG	#8 FLEX	-	10	0.219	0.625	1.250	0.374	0.812	2.257	Red	I-21	ILD-21	0.272	0.179
CLND-8-10-34	#8 AWG	#8 FLEX	-	10	0.219	0.750	1.437	0.374	0.812	2.444	Red	I-21	ILD-21	0.272	0.179
+CLND-8-14-58	#8 AWG	#8 FLEX	-	1/4	0.281	0.625	1.437	0.486	0.812	2.444	Red	I-21	ILD-21	0.272	0.179
+CLND-8-14-34	#8 AWG	#8 FLEX	-	1/4	0.281	0.750	1.437	0.486	0.812	2.444	Red	I-21	ILD-21	0.272	0.179
+CLND-8-14-1	#8 AWG	#8 FLEX	-	1/4	0.281	1.000	1.687	0.486	0.812	2.694	Red	I-21	ILD-21	0.272	0.179
+CLND-8-38-1	#8 AWG	#8 FLEX	-	3/8	0.406	1.000	1.937	0.593	0.812	2.944	Red	I-21	ILD-21	0.272	0.179
CLND-6-10-12	#6 AWG	-	-	10	0.219	0.500	1.250	0.411	1.125	2.570	Blue	I-24	ILD-24	0.295	0.203
CLND-6-10-58	#6 AWG	-	-	10	0.219	0.625	1.250	0.411	1.125	2.570	Blue	I-24	ILD-24	0.295	0.203
CLND-6-10-1116	#6 AWG	-	-	10	0.219	0.687	1.250	0.411	1.125	2.570	Blue	I-24	ILD-24	0.295	0.203
CLND-6-10-34	#6 AWG	-	-	10	0.219	0.750	1.437	0.411	1.125	2.757	Blue	I-24	ILD-24	0.295	0.203
CLND-6-14-12	#6 AWG	-	-	1/4	0.281	0.500	1.250	0.411	1.125	2.570	Blue	I-24	ILD-24	0.295	0.203
CLND-6-14-58	#6 AWG	-	-	1/4	0.281	0.625	1.437	0.411	1.125	2.757	Blue	I-24	ILD-24	0.295	0.203
CLND-6-14-34	#6 AWG	-	-	1/4	0.281	0.750	1.437	0.411	1.125	2.757	Blue	I-24	ILD-24	0.295	0.203
CLND-6-14-1	#6 AWG	-	-	1/4	0.281	1.000	1.687	0.411	1.125	3.007	Blue	I-24	ILD-24	0.295	0.203
+CLND-6-516-34	#6 AWG	-	-	5/16	0.343	0.750	1.687	0.532	1.125	3.007	Blue	I-24	ILD-24	0.295	0.203
+CLND-6-516-1	#6 AWG	-	-	5/16	0.343	1.000	1.937	0.532	1.125	3.257	Blue	I-24	ILD-24	0.295	0.203
+CLND-6-38-34	#6 AWG	-	-	3/8	0.406	0.750	1.687	0.593	1.125	3.007	Blue	I-24	ILD-24	0.295	0.203
+CLND-6-38-78	#6 AWG	-	-	3/8	0.406	0.875	1.937	0.593	1.125	3.257	Blue	I-24	ILD-24	0.295	0.203
+CLND-6-38-1	#6 AWG	-	-	3/8	0.406	1.000	1.937	0.593	1.125	3.257	Blue	I-24	ILD-24	0.295	0.203
+CLND-6-12-134	#6 AWG	-	-	1/2	0.562	1.750	3.000	0.750	1.125	4.320	Blue	I-24	ILD-24	0.295	0.203

+ Available 3rd quarter 2008

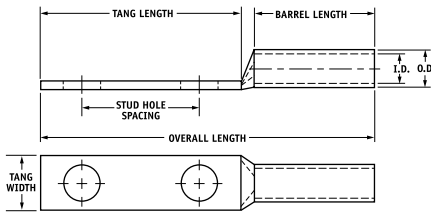
* When installed with specified dieless tools

See pages 34 to 39 for complete tooling information.

TYPE CLND

Features

- Manufactured from high strength seamless copper tubing.
- Electro-Tin plated.
- Maximum conductivity and excellent crimping characteristics.
- Long barrel length with chamfered entry.
- Color coded.
- UL 486A 90°C Listed and CSA Certified for 600 Volts.
- If proper high voltage spacing and insulation techniques are used, may be used for high voltage applications up to 35KV.
- For Copper conductor only.
- IlSCO connectors are UL Listed and CSA Certified with ILSCO or other Manufacturers' tools.
- UL File E6207



Catalog Number	Wire Size	Alt Wire Size	Expanded* Wire Range	Bolt Size	Stud Hole Dia.	Stud Hole Spacing	Tang Length	Tang Width	Barrel Length	Overall Length	Die Color Code	Die Index	Die Catalog Number	O.D.	I.D.
CLND-4-10-58	#4 AWG	#6 FLEX	4-6 AWG	10	0.219	0.625	1.250	0.486	1.125	2.609	Gray	I-29	ILD-29	0.343	0.250
CLND-4-10-34	#4 AWG	#6 FLEX	4-6 AWG	10	0.219	0.750	1.437	0.486	1.125	2.796	Gray	I-29	ILD-29	0.343	0.250
CLND-4-10-1	#4 AWG	#6 FLEX	4-6 AWG	10	0.219	1.000	1.687	0.486	1.125	3.046	Gray	I-29	ILD-29	0.343	0.250
CLND-4-14-58	#4 AWG	#6 FLEX	4-6 AWG	1/4	0.281	0.625	1.437	0.486	1.125	2.796	Gray	I-29	ILD-29	0.343	0.250
CLND-4-14-34	#4 AWG	#6 FLEX	4-6 AWG	1/4	0.281	0.750	1.437	0.486	1.125	2.796	Gray	I-29	ILD-29	0.343	0.250
CLND-4-516-34	#4 AWG	#6 FLEX	4-6 AWG	5/16	0.343	0.750	1.687	0.486	1.125	3.046	Gray	I-29	ILD-29	0.343	0.250
CLND-4-516-1	#4 AWG	#6 FLEX	4-6 AWG	5/16	0.343	1.000	1.937	0.486	1.125	3.296	Gray	I-29	ILD-29	0.343	0.250
+CLND-4-38-34	#4 AWG	#6 FLEX	4-6 AWG	3/8	0.406	0.750	1.687	0.593	1.125	3.046	Gray	I-29	ILD-29	0.343	0.250
+CLND-4-38-1	#4 AWG	#6 FLEX	4-6 AWG	3/8	0.406	1.000	1.937	0.593	1.125	3.296	Gray	I-29	ILD-29	0.343	0.250
CLND-4-12-134	#4 AWG	#6 FLEX	4-6 AWG	1/2	0.562	1.750	3.000	0.750	1.125	4.359	Gray	I-29	ILD-29	0.343	0.250
CLND-3-14-58	#3 AWG	#4 FLEX	3-6 AWG	1/4	0.281	0.625	1.437	0.532	1.125	2.817	White	I-29	ILD-29	0.375	0.275
CLND-3-14-34	#3 AWG	#4 FLEX	3-6 AWG	1/4	0.281	0.750	1.437	0.532	1.125	2.817	White	I-29	ILD-29	0.375	0.275
CLND-3-516-58	#3 AWG	#4 FLEX	3-6 AWG	5/16	0.343	0.625	1.437	0.532	1.125	2.817	White	I-29	ILD-29	0.375	0.275
CLND-3-516-1	#3 AWG	#4 FLEX	3-6 AWG	5/16	0.343	1.000	1.937	0.532	1.125	3.317	White	I-29	ILD-29	0.375	0.275
+CLND-3-38-34	#3 AWG	#4 FLEX	3-6 AWG	3/8	0.406	0.750	1.687	0.593	1.125	3.067	White	I-29	ILD-29	0.375	0.275
CLND-3-38-1	#3 AWG	#4 FLEX	3-6 AWG	3/8	0.406	1.000	1.937	0.593	1.125	3.317	White	I-29	ILD-29	0.375	0.275
+CLND-3-12-134	#3 AWG	#4 FLEX	3-6 AWG	1/2	0.562	1.750	3.000	0.750	1.125	4.380	White	I-29	ILD-29	0.375	0.275

+ Available 3rd quarter 2008

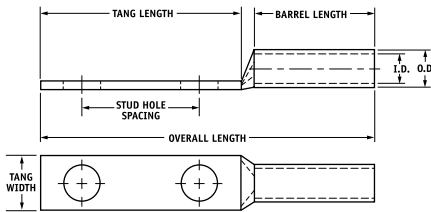
* When installed with specified dieless tools

See pages 34 to 39 for complete tooling information.

TYPE CLND

Features

- Manufactured from high strength seamless copper tubing.
- Electro-Tin plated.
- Maximum conductivity and excellent crimping characteristics.
- Long barrel length with chamfered entry.
- Color coded.
- UL 486A 90°C Listed and CSA Certified for 600 Volts.
- If proper high voltage spacing and insulation techniques are used, may be used for high voltage applications up to 35KV.
- For Copper conductor only.
- IlSCO connectors are UL Listed and CSA Certified with ILSCO or other Manufacturers' tools.
- UL File E6207



Catalog Number	Wire Size	Alt Wire Size	Expanded* Wire Range	Bolt Size	Stud Hole Dia.	Stud Hole Spacing	Tang Length	Tang Width	Barrel Length	Overall Length	Die Color Code	Die Index	Die Catalog Number	O.D.	I.D.
CLND-2-10-34	#2 AWG	-	2-6 AWG	10	0.219	0.750	1.437	0.599	1.125	2.848	Brown	I-33	ILD-33	0.421	0.312
CLND-2-14-58	#2 AWG	-	2-6 AWG	1/4	0.281	0.625	1.437	0.599	1.125	2.848	Brown	I-33	ILD-33	0.421	0.312
CLND-2-14-34	#2 AWG	-	2-6 AWG	1/4	0.281	0.750	1.437	0.599	1.125	2.848	Brown	I-33	ILD-33	0.421	0.312
CLND-2-14-1	#2 AWG	-	2-6 AWG	1/4	0.281	1.000	1.687	0.599	1.125	3.098	Brown	I-33	ILD-33	0.421	0.312
CLND-2-516-34	#2 AWG	-	2-6 AWG	5/16	0.343	0.750	1.687	0.599	1.125	3.098	Brown	I-33	ILD-33	0.421	0.312
CLND-2-516-1	#2 AWG	-	2-6 AWG	5/16	0.343	1.000	1.937	0.599	1.125	3.348	Brown	I-33	ILD-33	0.421	0.312
CLND-2-38-34	#2 AWG	-	2-6 AWG	3/8	0.406	0.750	1.687	0.599	1.125	3.098	Brown	I-33	ILD-33	0.421	0.312
CLND-2-38-78	#2 AWG	-	2-6 AWG	3/8	0.406	0.875	1.937	0.599	1.125	3.348	Brown	I-33	ILD-33	0.421	0.312
CLND-2-38-1	#2 AWG	-	2-6 AWG	3/8	0.406	1.000	1.937	0.599	1.125	3.348	Brown	I-33	ILD-33	0.421	0.312
CLND-2-38-134	#2 AWG	-	2-6 AWG	3/8	0.406	1.750	2.625	0.599	1.125	4.036	Brown	I-33	ILD-33	0.421	0.312
CLND-2-12-134	#2 AWG	-	2-6 AWG	1/2	0.562	1.750	3.000	0.750	1.125	4.411	Brown	I-33	ILD-33	0.421	0.312
CLND-1-14-58	#1 AWG	#2 FLEX	1-6 AWG	1/4	0.281	0.625	1.437	0.673	1.375	3.142	Green	I-37	ILD-37	0.468	0.359
CLND-1-14-34	#1 AWG	#2 FLEX	1-6 AWG	1/4	0.281	0.750	1.437	0.673	1.375	3.142	Green	I-37	ILD-37	0.468	0.359
CLND-1-14-1	#1 AWG	#2 FLEX	1-6 AWG	1/4	0.281	1.000	1.687	0.673	1.375	3.392	Green	I-37	ILD-37	0.468	0.359
CLND-1-516-78	#1 AWG	#2 FLEX	1-6 AWG	5/16	0.343	0.875	1.687	0.673	1.375	3.392	Green	I-37	ILD-37	0.468	0.359
CLND-1-516-1	#1 AWG	#2 FLEX	1-6 AWG	5/16	0.343	1.000	1.937	0.673	1.375	3.642	Green	I-37	ILD-37	0.468	0.359
CLND-1-38-1	#1 AWG	#2 FLEX	1-6 AWG	3/8	0.406	1.000	1.937	0.673	1.375	3.642	Green	I-37	ILD-37	0.468	0.359
CLND-1-12-134	#1 AWG	#2 FLEX	1-6 AWG	1/2	0.562	1.750	3.000	0.750	1.375	4.705	Green	I-37	ILD-37	0.468	0.359
CLND-1/0-14-58	1/0 AWG	#1 FLEX	1/0-6 AWG	1/4	0.281	0.625	1.437	0.738	1.500	3.293	Pink	I-42	ILD-42	0.515	0.390
CLND-1/0-14-34	1/0 AWG	#1 FLEX	1/0-6 AWG	1/4	0.281	0.750	1.437	0.738	1.500	3.293	Pink	I-42	ILD-42	0.515	0.390
CLND-1/0-14-1	1/0 AWG	#1 FLEX	1/0-6 AWG	1/4	0.281	1.000	1.687	0.738	1.500	3.543	Pink	I-42	ILD-42	0.515	0.390
CLND-1/0-516-34	1/0 AWG	#1 FLEX	1/0-6 AWG	5/16	0.343	0.750	1.687	0.738	1.500	3.543	Pink	I-42	ILD-42	0.515	0.390
CLND-1/0-516-78	1/0 AWG	#1 FLEX	1/0-6 AWG	5/16	0.343	0.875	1.687	0.738	1.500	3.543	Pink	I-42	ILD-42	0.515	0.390
CLND-1/0-516-1	1/0 AWG	#1 FLEX	1/0-6 AWG	5/16	0.343	1.000	1.937	0.738	1.500	3.793	Pink	I-42	ILD-42	0.515	0.390
CLND-1/0-38-1	1/0 AWG	#1 FLEX	1/0-6 AWG	3/8	0.406	1.000	1.937	0.738	1.500	3.793	Pink	I-42	ILD-42	0.515	0.390
CLND-1/0-38-134	1/0 AWG	#1 FLEX	1/0-6 AWG	3/8	0.406	1.750	2.625	0.738	1.500	4.481	Pink	I-42	ILD-42	0.515	0.390
CLND-1/0-12-1	1/0 AWG	#1 FLEX	1/0-6 AWG	1/2	0.562	1.000	2.125	0.738	1.500	3.981	Pink	I-42	ILD-42	0.515	0.390
CLND-1/0-12-134	1/0 AWG	#1 FLEX	1/0-6 AWG	1/2	0.562	1.750	3.000	0.738	1.500	4.856	Pink	I-42	ILD-42	0.515	0.390

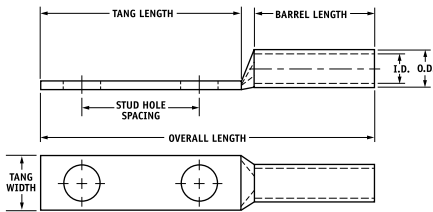
* When installed with specified dieless tools

See pages 34 to 39 for complete tooling information.

TYPE CLND

Features

- Manufactured from high strength seamless copper tubing.
- Electro-Tin plated.
- Maximum conductivity and excellent crimping characteristics.
- Long barrel length with chamfered entry.
- Color coded.
- UL 486A 90°C Listed and CSA Certified for 600 Volts.
- If proper high voltage spacing and insulation techniques are used, may be used for high voltage applications up to 35KV.
- For Copper conductor only.
- IlSCO connectors are UL Listed and CSA Certified with ILSCO or other Manufacturers' tools.
- UL File E6207



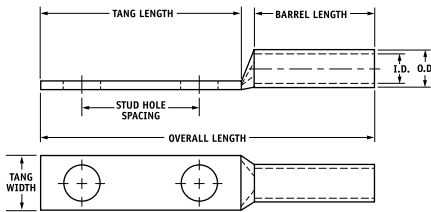
Catalog Number	Wire Size	Alt Wire Size	Expanded* Wire Range	Bolt Size	Stud Hole Dia.	Stud Hole Spacing	Tang Length	Tang Width	Barrel Length	Overall Length	Die Color Code	Die Index	Die Catalog Number	O.D.	I.D.
CLND-2/0-14-58	2/0 AWG	1/0 FLEX	2/0-4 AWG	1/4	0.281	0.625	1.437	0.811	1.500	3.333	Black	I-45	ILD-45	0.562	0.437
CLND-2/0-14-34	2/0 AWG	1/0 FLEX	2/0-4 AWG	1/4	0.281	0.750	1.437	0.811	1.500	3.333	Black	I-45	ILD-45	0.562	0.437
CLND-2/0-14-1	2/0 AWG	1/0 FLEX	2/0-4 AWG	1/4	0.281	1.000	1.687	0.811	1.500	3.583	Black	I-45	ILD-45	0.562	0.437
CLND-2/0-516-1	2/0 AWG	1/0 FLEX	2/0-4 AWG	5/16	0.343	1.000	1.937	0.811	1.500	3.833	Black	I-45	ILD-45	0.562	0.437
CLND-2/0-38-1	2/0 AWG	1/0 FLEX	2/0-4 AWG	3/8	0.406	1.000	1.937	0.811	1.500	3.833	Black	I-45	ILD-45	0.562	0.437
CLND-2/0-38-134	2/0 AWG	1/0 FLEX	2/0-4 AWG	3/8	0.406	1.750	2.625	0.811	1.500	4.521	Black	I-45	ILD-45	0.562	0.437
CLND-2/0-12-1	2/0 AWG	1/0 FLEX	2/0-4 AWG	1/2	0.562	1.000	2.125	0.811	1.500	4.021	Black	I-45	ILD-45	0.562	0.437
CLND-2/0-12-134	2/0 AWG	1/0 FLEX	2/0-4 AWG	1/2	0.562	1.750	3.000	0.811	1.500	4.896	Black	I-45	ILD-45	0.562	0.437
CLND-3/0-14-58	3/0 AWG	2/0 FLEX	3/0-2 AWG	1/4	0.281	0.625	1.437	0.885	1.500	3.376	Orange	I-50	ILD-50	0.609	0.484
CLND-3/0-14-34	3/0 AWG	2/0 FLEX	3/0-2 AWG	1/4	0.281	0.750	1.437	0.885	1.500	3.376	Orange	I-50	ILD-50	0.609	0.484
CLND-3/0-516-1	3/0 AWG	2/0 FLEX	3/0-2 AWG	5/16	0.343	1.000	1.937	0.885	1.500	3.876	Orange	I-50	ILD-50	0.609	0.484
CLND-3/0-38-1	3/0 AWG	2/0 FLEX	3/0-2 AWG	3/8	0.406	1.000	1.937	0.885	1.500	3.876	Orange	I-50	ILD-50	0.609	0.484
CLND-3/0-12-134	3/0 AWG	2/0 FLEX	3/0-2 AWG	1/2	0.562	1.750	3.000	0.885	1.500	4.939	Orange	I-50	ILD-50	0.609	0.484
CLND-4/0-14-58	4/0 AWG	3/0 FLEX	4/0-1 AWG	1/4	0.281	0.625	1.437	0.999	1.500	3.428	Purple	I-54	ILD-54	0.687	0.546
CLND-4/0-14-34	4/0 AWG	3/0 FLEX	4/0-1 AWG	1/4	0.281	0.750	1.437	0.999	1.500	3.428	Purple	I-54	ILD-54	0.687	0.546
CLND-4/0-14-1	4/0 AWG	3/0 FLEX	4/0-1 AWG	1/4	0.281	1.000	1.687	0.999	1.500	3.678	Purple	I-54	ILD-54	0.687	0.546
CLND-4/0-516-34	4/0 AWG	3/0 FLEX	4/0-1 AWG	5/16	0.343	0.750	1.687	0.999	1.500	3.678	Purple	I-54	ILD-54	0.687	0.546
CLND-4/0-516-1	4/0 AWG	3/0 FLEX	4/0-1 AWG	5/16	0.343	1.000	1.937	0.999	1.500	3.928	Purple	I-54	ILD-54	0.687	0.546
CLND-4/0-516-134	4/0 AWG	3/0 FLEX	4/0-1 AWG	5/16	0.343	1.750	2.500	0.999	1.500	4.491	Purple	I-54	ILD-54	0.687	0.546
CLND-4/0-38-1	4/0 AWG	3/0 FLEX	4/0-1 AWG	3/8	0.406	1.000	1.937	0.999	1.500	3.928	Purple	I-54	ILD-54	0.687	0.546
CLND-4/0-38-134	4/0 AWG	3/0 FLEX	4/0-1 AWG	3/8	0.406	1.750	2.625	0.999	1.500	4.616	Purple	I-54	ILD-54	0.687	0.546
CLND-4/0-12-1	4/0 AWG	3/0 FLEX	4/0-1 AWG	1/2	0.562	1.000	2.125	0.999	1.500	4.116	Purple	I-54	ILD-54	0.687	0.546
CLND-4/0-12-114	4/0 AWG	3/0 FLEX	4/0-1 AWG	1/2	0.562	1.250	2.500	0.999	1.500	4.491	Purple	I-54	ILD-54	0.687	0.546
CLND-4/0-12-134	4/0 AWG	3/0 FLEX	4/0-1 AWG	1/2	0.562	1.750	3.000	0.999	1.500	4.991	Purple	I-54	ILD-54	0.687	0.546

* When installed with specified dieless tools
See pages 34 to 39 for complete tooling information.

TYPE CLND

Features

- Manufactured from high strength seamless copper tubing.
- Electro-Tin plated.
- Maximum conductivity and excellent crimping characteristics.
- Long barrel length with chamfered entry.
- Color coded.
- UL 486A 90°C Listed and CSA Certified for 600 Volts.
- If proper high voltage spacing and insulation techniques are used, may be used for high voltage applications up to 35KV.
- For Copper conductor only.
- IlSCO connectors are UL Listed and CSA Certified with ILSCO or other Manufacturers' tools.
- UL File E6207



Catalog Number	Wire Size	Alt Wire Size	Expanded* Wire Range	Bolt Size	Stud Hole Dia.	Stud Hole Spacing	Tang Length	Tang Width	Barrel Length	Overall Length	Die Color Code	Die Index	Die Catalog Number	O.D.	I.D.
CLND-250-14-34	250kcmil	4/0 FLEX	250kcmil - 1/0 AWG	1/4	0.281	0.750	1.437	1.088	1.688	3.656	Yellow	I-62	ILD-62	0.750	0.593
CLND-250-38-1	250kcmil	4/0 FLEX	250kcmil - 1/0 AWG	3/8	0.406	1.000	1.937	1.088	1.688	4.156	Yellow	I-62	ILD-62	0.750	0.593
CLND-250-38-134	250kcmil	4/0 FLEX	250kcmil - 1/0 AWG	3/8	0.406	1.750	2.625	1.088	1.688	4.844	Yellow	I-62	ILD-62	0.750	0.593
CLND-250-12-114	250kcmil	4/0 FLEX	250kcmil - 1/0 AWG	1/2	0.562	1.250	2.500	1.088	1.688	4.719	Yellow	I-62	ILD-62	0.750	0.593
CLND-250-12-134	250kcmil	4/0 FLEX	250kcmil - 1/0 AWG	1/2	0.562	1.750	3.000	1.088	1.688	5.219	Yellow	I-62	ILD-62	0.750	0.593
CLND-300-38-1	300kcmil	250 G,H FLEX	300kcmil - 2/0 AWG	3/8	0.406	1.000	1.937	1.189	2.000	4.524	White	I-66	ILD-66	0.812	0.660
CLND-300-12-134	300kcmil	250 G,H FLEX	300kcmil - 2/0 AWG	1/2	0.562	1.750	3.000	1.189	2.000	5.587	White	I-66	ILD-66	0.812	0.660
CLND-350-14-34	350kcmil	250 I,K,M FLEX 262.2 DLO	350kcmil - 3/0 AWG	1/4	0.281	0.750	1.437	1.291	2.000	4.060	Red	I-71	ILD-71	0.890	0.703
CLND-350-516-134	350kcmil	250 I,K,M FLEX 262.2 DLO	350kcmil - 3/0 AWG	5/16	0.343	1.750	2.500	1.291	2.000	5.123	Red	I-71	ILD-71	0.890	0.703
CLND-350-38-1	350kcmil	250 I,K,M FLEX 262.2 DLO	350kcmil - 3/0 AWG	3/8	0.406	1.000	1.937	1.291	2.000	4.560	Red	I-71	ILD-71	0.890	0.703
CLND-350-12-114	350kcmil	250 I,K,M FLEX 262.2 DLO	350kcmil - 3/0 AWG	1/2	0.562	1.250	2.500	1.291	2.000	5.123	Red	I-71	ILD-71	0.890	0.703
CLND-350-12-134	350kcmil	250 I,K,M FLEX 262.2 DLO	350kcmil - 3/0 AWG	1/2	0.562	1.750	3.000	1.291	2.000	5.623	Red	I-71	ILD-71	0.890	0.703
CLND-400-38-1	400kcmil	300 G,H,I,K,M FLEX 313.1 DLO	400kcmil - 4/0 AWG	3/8	0.406	1.000	1.937	1.365	2.125	4.729	Blue	I-76	ILD-76	0.937	0.750
CLND-400-38-116	400kcmil	300 G,H,I,K,M FLEX 313.1 DLO	400kcmil - 4/0 AWG	3/8	0.406	1.062	1.937	1.365	2.125	4.729	Blue	I-76	ILD-76	0.937	0.750
CLND-400-12-134	400kcmil	300 G,H,I,K,M FLEX 313.1 DLO	400kcmil - 4/0 AWG	1/2	0.562	1.750	3.000	1.365	2.125	5.792	Blue	I-76	ILD-76	0.937	0.750
CLND-500-14-34	500kcmil	350 G,H,I,K,M FLEX 373.7 DLO	500kcmil - 250kcmil	1/4	0.281	0.750	1.437	1.535	2.250	4.419	Brown	I-87	ILD-87	1.062	0.828
CLND-500-38-1	500kcmil	350 G,H,I,K,M FLEX 373.7 DLO	500kcmil - 250kcmil	3/8	0.406	1.000	1.937	1.535	2.250	4.919	Brown	I-87	ILD-87	1.062	0.828
CLND-500-12-114	500kcmil	350 G,H,I,K,M FLEX 373.7 DLO	500kcmil - 250kcmil	1/2	0.562	1.250	2.500	1.535	2.250	5.482	Brown	I-87	ILD-87	1.062	0.828
CLND-500-12-134	500kcmil	350 G,H,I,K,M FLEX 373.7 DLO	500kcmil - 250kcmil	1/2	0.562	1.750	3.000	1.535	2.250	5.982	Brown	I-87	ILD-87	1.062	0.828

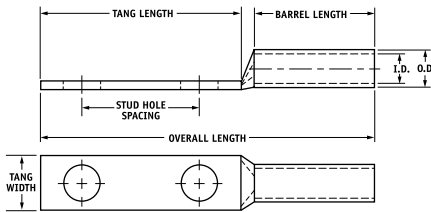
* When installed with specified dieless tools

See pages 34 to 39 for complete tooling information.

TYPE CLND

Features

- Manufactured from high strength seamless copper tubing.
- Electro-Tin plated.
- Maximum conductivity and excellent crimping characteristics.
- Long barrel length with chamfered entry.
- Color coded.
- UL 486A 90°C Listed and CSA Certified for 600 Volts.
- If proper high voltage spacing and insulation techniques are used, may be used for high voltage applications up to 35KV.
- For Copper conductor only.
- IlSCO connectors are UL Listed and CSA Certified with ILSCO or other Manufacturers' tools.
- UL File E6207



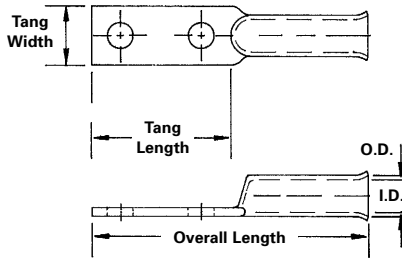
Catalog Number	Wire Size	Alt Wire Size	Expanded* Wire Range	Bolt Size	Stud Hole Dia.	Stud Hole Spacing	Tang Length	Tang Width	Barrel Length	Overall Length	Die Color Code	Die Index	Die Catalog Number	O.D.	I.D.
CLND-600-38-1	600kcmil	400 G,H,I,K,M FLEX 444.4 DLO	600kcmil - 250kcmil	3/8	0.406	1.000	1.937	1.712	2.687	5.433	Green	I-94	ILD-94	1.187	0.920
CLND-600-12-134	600kcmil	400 G,H,I,K,M FLEX 444.4 DLO	600kcmil - 250kcmil	1/2	0.562	1.750	3.000	1.712	2.687	6.496	Green	I-94	ILD-94	1.187	0.920
CLND-700-38-1	700kcmil	500 G,H,I,K,M FLEX 535.3 DLO	700kcmil - 350kcmil	3/8	0.406	1.000	1.937	1.816	2.687	5.493	Pink	I-99	ILD-99	1.250	0.991
CLND-700-38-118	700kcmil	500 G,H,I,K,M FLEX 535.3 DLO	700kcmil - 350kcmil	3/8	0.406	1.125	2.125	1.816	2.687	5.681	Pink	I-99	ILD-99	1.250	0.991
CLND-700-12-112	700kcmil	500 G,H,I,K,M FLEX 535.3 DLO	700kcmil - 350kcmil	1/2	0.562	1.500	2.625	1.816	2.687	6.181	Pink	I-99	ILD-99	1.250	0.991
CLND-700-12-134	700kcmil	500 G,H,I,K,M FLEX 535.3 DLO	700kcmil - 350kcmil	1/2	0.562	1.750	3.000	1.816	2.687	6.556	Pink	I-99	ILD-99	1.250	0.991
CLND-700-12-178	700kcmil	500 G,H,I,K,M FLEX 535.3 DLO	700kcmil - 350kcmil	1/2	0.562	1.875	3.000	1.816	2.687	6.556	Pink	I-99	ILD-99	1.250	0.991
CLND-750-38-1	750kcmil	600 G,H,I,M FLEX 646.4 DLO	750kcmil - 500kcmil	3/8	0.406	1.000	1.937	1.901	2.875	5.714	Black	I-106	ILD-106	1.313	1.031
CLND-750-38-118	750kcmil	600 G,H,I,M FLEX 646.4 DLO	750kcmil - 500kcmil	3/8	0.406	1.125	2.125	1.901	2.875	5.902	Black	I-106	ILD-106	1.313	1.031
CLND-750-12-112	750kcmil	600 G,H,I,M FLEX 646.4 DLO	750kcmil - 500kcmil	1/2	0.562	1.500	2.625	1.901	2.875	6.402	Black	I-106	ILD-106	1.313	1.031
CLND-750-12-134	750kcmil	600 G,H,I,M FLEX 646.4 DLO	750kcmil - 500kcmil	1/2	0.562	1.750	3.000	1.901	2.875	6.777	Black	I-106	ILD-106	1.313	1.031
CLND-750-58-112	750kcmil	600 G,H,I,M FLEX 646.4 DLO	750kcmil - 500kcmil	5/8	0.562	1.500	3.000	1.901	2.875	6.777	Black	I-106	ILD-106	1.313	1.031
CLND-1000-38-1	1000kcmil	750 G,H,I FLEX 777.7 DLO	1000kcmil - 750kcmil	3/8	0.406	1.000	1.937	2.169	3.000	5.962	White	I-125	ILD-125	1.500	1.172
CLND-1000-12-114	1000kcmil	750 G,H,I FLEX 777.7 DLO	1000kcmil - 750kcmil	1/2	0.562	1.250	2.500	2.169	3.000	6.525	White	I-125	ILD-125	1.500	1.172
CLND-1000-12-134	1000kcmil	750 G,H,I FLEX 777.7 DLO	1000kcmil - 750kcmil	1/2	0.562	1.750	3.000	2.169	3.000	7.025	White	I-125	ILD-125	1.500	1.172
CLND-1000-58-112	1000kcmil	750 G,H,I FLEX 777.7 DLO	1000kcmil - 750kcmil	5/8	0.562	1.500	3.000	2.169	3.000	7.025	White	I-125	ILD-125	1.500	1.172

* When installed with specified dieless tools
See pages 34 to 39 for complete tooling information.

TYPE CLNF

Features

- Manufactured from high strength seamless copper tubing.
- Electro-Tin plated.
- Maximum conductivity and excellent crimping characteristics.
- Long barrel length with chamfered entry.
- Color coded.
- UL 486A 90°C Listed and CSA Certified for 600 Volts.
- If proper high voltage spacing and insulation techniques are used, may be used for high voltage applications up to 35KV.
- For Copper conductor only.
- IlSCO connectors are UL Listed and CSA Certified with ILSCO or other Manufacturers' tools.
- UL File E6207



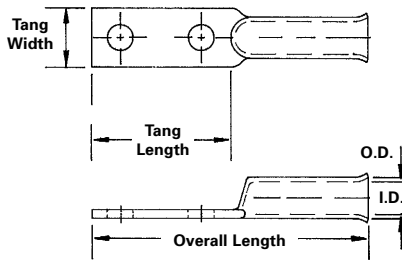
Catalog Number	Wire Size	Alt Wire Size	Expanded* Wire Range	Bolt Size	Stud Hole Dia.	Stud Hole Spacing	Tang Length	Tang Width	Barrel Length	Overall Length	Die Color Code	Die Index	Die Catalog Number	O.D.	I.D.
CLNF-2/0-12-134	2/0 AWG	1/0 FLEX	2/0-4 AWG	1/2	0.531	1.750	3.000	0.813	1.938	5.219	Black	I-45	ILD-45	0.562	0.437
CLNF-2/0-38	2/0 AWG	1/0 FLEX	2/0-4 AWG	3/8	0.406	-	0.875	0.813	1.938	3.094	Black	I-45	ILD-45	0.562	0.437
CLNF-3/0-12-134	3/0 AWG	2/0 FLEX	3/0-2 AWG	1/2	0.531	1.750	3.000	0.906	1.938	5.250	Orange	I-50	ILD-50	0.609	0.484
CLNF-3/0-12	3/0 AWG	2/0 FLEX	3/0-2 AWG	1/2	0.531	-	1.000	0.906	1.938	3.250	Orange	I-50	ILD-50	0.609	0.484
CLNF-4/0-12-134	4/0 AWG	3/0 FLEX	4/0-1 AWG	1/2	0.531	1.750	3.000	1.000	2.125	5.469	Purple	I-54	ILD-54	0.687	0.546
CLNF-4/0-12	4/0 AWG	3/0 FLEX	4/0-1 AWG	1/2	0.531	-	1.000	1.000	2.125	3.469	Purple	I-54	ILD-54	0.687	0.546
CLNF-250-12-134	250kcmil	4/0 FLEX	250kcmil-1/0 AWG	1/2	0.531	1.750	3.000	1.090	2.125	5.563	Yellow	I-62	ILD-62	0.750	0.593
CLNF-250-12	250kcmil	4/0 FLEX	250kcmil-1/0 AWG	1/2	0.531	-	1.125	1.090	2.125	3.688	Yellow	I-62	ILD-62	0.750	0.593
CLNF-300-12-134	300kcmil	250 G, H FLEX	300kcmil-2/0 AWG	1/2	0.531	1.750	3.000	1.188	2.250	5.937	White	I-66	ILD-66	0.812	0.660
CLNF-300-58	300kcmil	250 G, H FLEX	300kcmil-2/0 AWG	5/8	0.688	-	1.125	1.188	2.250	3.875	White	I-66	ILD-66	0.812	0.660
CLNF-350-12-134	350kcmil	250 I,K,M FLEX 262.2 DLO	350kcmil-3/0 AWG	1/2	0.531	1.750	3.000	1.280	2.563	6.000	Red	I-71	ILD-71	0.890	0.703
CLNF-350-58	350kcmil	250 I,K,M FLEX 262.2 DLO	350kcmil-3/0 AWG	5/8	0.688	-	1.125	1.280	2.563	4.125	Red	I-71	ILD-71	0.890	0.703
CLNF-400-12-134	400kcmil	300 G,H,I,K,M FLEX 313.1 DLO	400kcmil-4/0 AWG	1/2	0.531	1.750	3.000	1.375	2.688	6.313	Blue	I-76	ILD-76	0.937	0.750
CLNF-400-58	400kcmil	300 G,H,I,K,M FLEX 313.1 DLO	400kcmil-4/0 AWG	5/8	0.688	-	1.500	1.375	2.688	4.813	Blue	I-76	ILD-76	0.937	0.750
CLNF-500-12-134	500kcmil	350 G,H,I,K,M FLEX 373.7 DLO	500kcmil-250kcmil	1/2	0.531	1.750	3.000	1.531	2.813	6.313	Brown	I-87	ILD-87	1.062	0.828
CLNF-500-58	500kcmil	350 G,H,I,K,M FLEX 373.7 DLO	500kcmil-250kcmil	5/8	0.688	-	1.500	1.531	2.813	4.813	Brown	I-87	ILD-87	1.062	0.828

* When installed with specified dieless tools
See pages 34 to 39 for complete tooling information.

TYPE CLNF

Features

- Manufactured from high strength seamless copper tubing.
- Electro-Tin plated.
- Maximum conductivity and excellent crimping characteristics.
- Long barrel length with chamfered entry.
- Color coded.
- UL 486A 90°C Listed and CSA Certified for 600 Volts.
- If proper high voltage spacing and insulation techniques are used, may be used for high voltage applications up to 35KV.
- For Copper conductor only.
- IlSCO connectors are UL Listed and CSA Certified with ILSCO or other Manufacturers' tools.
- UL File E6207



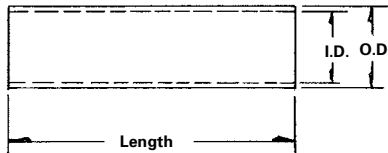
Catalog Number	Wire Size	Alt Wire Size	Expanded* Wire Range	Bolt Size	Stud Hole Dia.	Stud Hole Spacing	Tang Length	Tang Width	Barrel Length	Overall Length	Die Color Code	Die Index	Die Catalog Number	O.D.	I.D.
CLNF-600-12-134	600kcmil	400 G,H,I,K,M FLEX 444.4 DLO	600kcmil-250kcmil	1/2	0.531	1.750	3.000	1.680	2.875	6.813	Green	I-94	ILD-94	1.187	0.920
CLNF-600-58	600kcmil	400 G,H,I,K,M FLEX 444.4 DLO	600kcmil-250kcmil	5/8	0.688	-	1.500	1.680	2.875	5.375	Green	I-94	ILD-94	1.187	0.920
CLNF-700-12-134	700kcmil	500 G,H,I,K,M FLEX 535.3 DLO	700kcmil-350kcmil	1/2	0.531	1.750	3.000	1.844	2.813	6.625	Pink	I-99	ILD-99	1.250	0.991
CLNF-700-58	700kcmil	500 G,H,I,K,M FLEX 535.3 DLO	700kcmil-350kcmil	5/8	0.688	-	1.750	1.844	2.563	5.375	Pink	I-99	ILD-99	1.250	0.991
CLNF-750-12-134	750kcmil	600 G,H,I,M FLEX 646.4 DLO	750kcmil-500kcmil	1/2	0.531	1.750	3.000	1.906	2.813	6.625	Black	I-106	ILD-106	1.313	1.031
CLNF-750-58	750kcmil	600 G,H,I,M FLEX 646.4 DLO	750kcmil-500kcmil	5/8	0.688	-	1.938	1.906	2.813	5.563	Black	I-106	ILD-106	1.313	1.031
CLNF-1000-12-134	1000kcmil	750 G,H,I FLEX 777.7 DLO	1000kcmil-750kcmil	1/2	0.531	1.750	3.000	2.188	3.563	7.438	White	I-125	ILD-125	1.500	1.172
CLNF-1000-58	1000kcmil	750 G,H,I FLEX 777.7 DLO	1000kcmil-750kcmil	5/8	0.688	-	2.125	2.188	3.563	6.563	White	I-125	ILD-125	1.500	1.172
CLNF-1111-12-134	1111kcmil	-	-	1/2	0.562	1.750	3.000	2.600	3.313	7.438	White	IDT-12	IDT-12	1.750	1.458
CLNF-1111-58	1111kcmil	-	-	5/8	0.656	-	2.250	2.600	3.563	6.688	White	IDT-12	IDT-12	1.750	1.458

* When installed with specified dieless tools
See pages 34 to 39 for complete tooling information.

TYPE CT

Features

- Manufactured from high strength seamless copper tubing.
- Electro-Tin plated.
- Maximum conductivity and excellent crimping characteristics.
- Chamfered entry.
- Color coded.
- UL 486A 90°C Listed and CSA Certified for 600 Volts.
- If proper high voltage spacing and insulation techniques are used, may be used for high voltage applications up to 35KV.
- For Copper conductor only.
- IlSCO connectors are UL Listed and CSA Certified with ILSCO or other Manufacturers' tools.
- UL File E6207



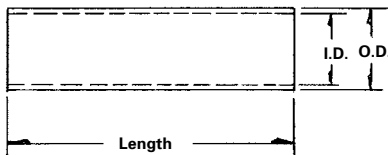
Catalog Number	Wire Size	Alt Wire Size	Expanded* Wire Range	Barrel Length	Die Color Code	Die Index	Die Catalog Number	O.D.	I.D.
CT-8	8 AWG	#8 Flex	-	1.125	Red	I-21	ILD-21	0.272	0.179
CT-6	6 AWG	-	-	1.750	Blue	I-24	ILD-24	0.295	0.203
CT-4	4 AWG	#6 Flex	4-6 AWG	1.875	Gray	I-29	ILD-29	0.343	0.250
CT-3	3 AWG	#4 Flex	3-6 AWG	1.750	White	I-29	ILD-29	0.375	0.275
CT-2	2 AWG	-	2-6 AWG	1.875	Brown	I-33	ILD-33	0.421	0.312
CT-1	1 AWG	#2 Flex	1-6 AWG	1.875	Green	I-37	ILD-37	0.468	0.359
CT-1/0	1/0 AWG	#1 Flex	1/0-6 AWG	1.875	Pink	I-42	ILD-42	0.515	0.390
CT-2/0	2/0 AWG	1/0 Flex	2/0-4 AWG	2.000	Black	I-45	ILD-45	0.562	0.437
CT-3/0	3/0 AWG	2/0 Flex	3/0-2 AWG	2.125	Orange	I-50	ILD-50	0.609	0.484
CT-4/0	4/0 AWG	3/0 Flex	4/0-1 AWG	2.125	Purple	I-54	ILD-54	0.687	0.546
CT-250	250kcmil	4/0 Flex	250kcmil-1/0 AWG	2.250	Yellow	I-62	ILD-62	0.750	0.593
CT-300	300kcmil	250 G,H Flex	300kcmil-2/0 AWG	2.250	White	I-66	ILD-66	0.812	0.660
CT-350	350kcmil	250 I,K,M Flex 262.2 DLO	350kcmil-3/0 AWG	2.375	Red	I-71	ILD-71	0.890	0.703
CT-400	400kcmil	300 G,H,I,K,M Flex 313.1 DLO	400kcmil-4/0 AWG	2.500	Blue	I-76	ILD-76	0.937	0.750
CT-500	500kcmil	350 G,H,I,K,M Flex 373.7 DLO	500kcmil-250kcmil	2.875	Brown	I-87	ILD-87	1.062	0.828
CT-600	600kcmil	400 G,H,I,K,M Flex 444.4 DLO	600kcmil-250kcmil	2.875	Green	I-94	ILD-94	1.187	0.920
CT-750	750kcmil	600 G,H,I,M Flex 646.4 DLO	750kcmil-500kcmil	3.375	Black	I-106	ILD-106	1.313	1.031
CT-1000	1000kcmil	750 G,H,I Flex 777.7 DLO	1000kcmil-750kcmil	3.875	White	I-125	ILD-125	1.500	1.172

* When installed with specified dieless tools
See pages 34 to 39 for complete tooling information.

TYPE CTL

Features

- Manufactured from high strength seamless copper tubing.
- Electro-Tin plated.
- Maximum conductivity and excellent crimping characteristics.
- Chamfered entry.
- Color coded.
- UL 486A 90°C Listed and CSA Certified for 600 Volts.
- If proper high voltage spacing and insulation techniques are used, may be used for high voltage applications up to 35KV.
- For Copper conductor only.
- IlSCO connectors are UL Listed and CSA Certified with ILSCO or other Manufacturers' tools.
- UL File E6207



Catalog Number	Wire Size	Alt Wire Size	Expanded* Wire Range	Barrel Length	Die Color Code	Die Index	Die Catalog Number	O.D.	I.D.
CTL-6	6 AWG	-	-	2.375	Blue	I-24	ILD-24	0.295	0.203
CTL-4	4 AWG	#6 Flex	4-6 AWG	2.375	Gray	I-29	ILD-29	0.343	0.250
CTL-3	3 AWG	#4 Flex	3-6 AWG	2.375	White	I-29	ILD-29	0.375	0.275
CTL-2	2 AWG	-	2-6 AWG	2.625	Brown	I-33	ILD-33	0.421	0.312
CTL-1	1 AWG	#2 Flex	1-6 AWG	2.875	Green	I-37	ILD-37	0.468	0.359
CTL-1/0	1/0 AWG	#1 Flex	1/0-6 AWG	2.875	Pink	I-42	ILD-42	0.515	0.390
CTL-2/0	2/0 AWG	1/0 Flex	2/0-4 AWG	3.125	Black	I-45	ILD-45	0.562	0.437
CTL-3/0	3/0 AWG	2/0 Flex	3/0-2 AWG	3.125	Orange	I-50	ILD-50	0.609	0.484
CTL-4/0	4/0 AWG	3/0 Flex	4/0-1 AWG	3.375	Purple	I-54	ILD-54	0.687	0.546
CTL-250	250kcmil	4/0 Flex	250kcmil-1/0 AWG	3.375	Yellow	I-62	ILD-62	0.750	0.593
CTL-300	300kcmil	250 G,H Flex	300kcmil-2/0 AWG	4.125	White	I-66	ILD-66	0.812	0.660
CTL-350	350kcmil	250 I,K,M Flex 262.2 DLO	350kcmil-3/0 AWG	4.125	Red	I-71	ILD-71	0.890	0.703
CTL-400	400kcmil	300 G,H,I,K,M Flex 313.1 DLO	400kcmil-4/0 AWG	4.375	Blue	I-76	ILD-76	0.937	0.750
CTL-500	500kcmil	350 G,H,I,K,M Flex 373.7 DLO	500kcmil-250kcmil	4.625	Brown	I-87	ILD-87	1.062	0.828
CTL-600	600kcmil	400 G,H,I,K,M Flex 444.4 DLO	600kcmil-250kcmil	4.625	Green	I-94	ILD-94	1.187	0.920
CTL-750	750kcmil	600 G,H,I,M Flex 646.4 DLO	750kcmil-500kcmil	5.875	Black	I-106	ILD-106	1.313	1.031
CTL-1000	1000kcmil	750 G,H,I Flex 777.7 DLO	1000kcmil-750kcmil	6.125	White	I-125	ILD-125	1.500	1.172

* When installed with specified dieless tools
See pages 34 to 39 for complete tooling information.

ILSCO Compression Dies

**ILC-12, ILC-12-N, ILC-12H, ILC-12H-N, ILCB-12, ILCB-12-N,
ILC-14, ILC-14H, ILC-15, ILC-15H, ILC-750**



Catalog Number	Class B/C Copper Wire Only	Fine Strand Copper Wire Only
	Series CS, CL, CT, CTL	Series CS, CL, CT, CTL
ILD-21	8 AWG	8 FLEX CLASS G,H,I,K,M,DLO
ILD-24	6 AWG	-
ILD-29	4-3 AWG	6-4 FLEX CLASS G,H,I,K,M,DLO
ILD-33	2 AWG	-
ILD-37	1 AWG	2 FLEX CLASS G,H,I,K,M,DLO
ILD-42	1/0 AWG	1 FLEX CLASS G,H,I,K,M,DLO
ILD-45	2/0 AWG	1/0 FLEX CLASS G,H,I,K,M,DLO
ILD-50	3/0 AWG	2/0 FLEX CLASS G,H,I,K,M,DLO
ILD-54	4/0 AWG	3/0 FLEX CLASS G,H,I,K,M,DLO
ILD-62	250kcmil	4/0 FLEX CLASS G,H,I,K,M,DLO
ILD-66	300kcmil	250 G,H
ILD-71	350kcmil	250 I,K,M 262 DLO
ILD-76	400kcmil	300 G,H,I,K,M 313 DLO
ILD-87	500kcmil	350 G,H,I,K,M 373 DLO
ILD-94	600kcmil	400 G,H,I,K,M 444 DLO
ILD-99	700kcmil	500 G,H,I,K,M 535 DLO
ILD-106	750kcmil	600 G,H,I,M 646 DLO
ILD-125	1000kcmil	750 G,H,I 777 DLO

ILSCO TOOLS - Tooling Information

WARNING! Do Not Use with Aluminum Wire

Hydraulic Tools

Lug Size	Class B/C Wire Size	Color Code	Die Index	Manual Hand Tools						Hydraulic Tools					
				94285			MT-25	ILC-10-N		IDT-6, IDT-6H 6.2 Ton Dieless, IDTB-6 6.2 Ton Dieless Battery	ILC-12-N, ILC-12H-N, ILC-12, ILC-12H, ILC-14, ILC-14H 12 Ton, ILCB-12-N, ILCB-12 12 Ton Battery	IDT-12-N 15 Ton Dieless	IDT-12, IDTB-12 11 Ton Dieless	ILC-15H 15 Ton, ILC-30H 30 Ton	ILC-750
				Left Die	Right Die	Crimps	Crimps	Index	Crimps						
8	8 AWG	Red	21	M	K	2	1	Red	1		1			1	1
6	6 AWG	Blue	24	K	K	2	1	Blue	2	1	1			1	1
4	4 AWG	Gray	29	K	K	2	1	Gray	2	1	1	1	1	1	1
3	3 AWG	White	29	K	K	2	1	Gray	2	1	1	1	1	1	1
2	2 AWG	Brown	33	H	H	2	2	Brown	2	1	1	1	1	1	1
1	1 AWG	Green	37	H	H	2	2	Green	2	1	1	1	1	1	1
1/0	1/0 AWG	Pink	42	E	A	2	2	Pink	4	1	1	1	1	1	1
2/0	2/0 AWG	Black	45	E	A	3	2			1	1	1	1	1	1
3/0	3/0 AWG	Orange	50	A	C	3	2			2	1	1	1	1	1
4/0	4/0 AWG	Purple	54	A	B	3	2			2	1	1	1	1	1
250	250kcmil	Yellow	62	A	A	3	2			2	1	1	1	1	1
300	300kcmil	White	66							2	2	1	1	2	2
350	350kcmil	Red	71							2	2	1	1	2	2
400	400kcmil	Blue	76							2	2	1	1	2	2
500	500kcmil	Brown	87							2	2	1	1	2	2
600	600kcmil	Green	94							2	2	1	1	2	2
700	700kcmil	Pink	99							3	2	1	1	2	2
750	750kcmil	Black	106							3	2	1	1	2	2
1000	1000kcmil	White	125								2	1	1	2	

RANGE TAKING

Lug Size	Standard Wire Size	Expanded Wire Size	No. Crimps for ILSCO IDT-12, IDT-12-N and Burndy Y644M, PAT644	No. Crimps for ILSCO IDTB-6, IDT-6 and IDT-6H
4	4 AWG	4 - 6 AWG		1
3	3 AWG	3 - 6 AWG	1	1
2	2 AWG	2 - 6 AWG	1	1
1	1 AWG	1 - 6 AWG	1	1
1/0	1/0 AWG	1/0 - 6 AWG	1	1
2/0	2/0 AWG	2/0 - 4 AWG	1	1
3/0	3/0 AWG	3/0 - 2 AWG	1	2
4/0	4/0 AWG	4/0 - 1 AWG	1	2
250	250kcmil	250kcmil - 1/0 AWG	1	2
300	300kcmil	300kcmil - 2/0 AWG	1	2
350	350kcmil	350kcmil - 3/0 AWG	1	2
400	400kcmil	400kcmil - 4/0 AWG	1	2
500	500kcmil	500kcmil - 250kcmil	1	2
600	600kcmil	600kcmil - 250kcmil	1	2
700	700kcmil	700kcmil - 350kcmil	1	3
750	750kcmil	750kcmil - 500kcmil	1	3
1000	1000kcmil	1000kcmil - 750kcmil	1	

UL Listed and CSA Certified when installed with tools and dies shown above

- a) Connectors are marked with color, die numbers and required number of crimps for ILSCO hydraulic tools. When using other listed tools, consult chart for crimps required. Crimps should be evenly spaced on connector.
- b) The ILSCO 94285, MT-25 and all dieless tools are not color coded or do not contain the die index.
- c) Strip Length = Barrel Length + 1/16 Inch
- d) For long barrel connectors double the amount of crimps indicated on chart except for 1000kcmil add only one additional crimp.

ILSCO TOOLS - Tooling Information

WARNING! Do Not Use with Aluminum Wire

Lug Size	Class B/C Wire Size	Color Code	Die Index	Manual Hand Tools						Hydraulic Tools				
				94285			MT-25	ILC-10-N		IDT-6, IDT-6H 6.2 Ton Dieless, IDTB-6 6.2 Ton Dieless Battery	ILC-12-N, ILC-12H-N, ILC-12, ILC-12H, ILC-14, ILC-14H 12 Ton, ILCB-12-N, ILCB-12 12 Ton Battery	IDT-12-N 15 Ton Dieless	IDT-12, IDT-12H, IDTB-12 11 Ton Dieless	ILC-15H 15 Ton, ILC-30H 30 Ton
				Left Die	Right Die	Crimps	Crimps	Index	Crimps					
8	8 AWG	Red	21	M	K	2	1	Red	1		1			1
6	6 AWG	Blue	24	K	K	2	1	Blue	2	1	1		1	1
4	4 AWG	Gray	29	K	K	2	1	Gray	2	1	1		1	1
3	3 AWG	White	29	K	K	2	1	Gray	2	1	1	1	1	1
2	2 AWG	Brown	33	H	H	2	2	Brown	2	1	1	1	1	1
1	1 AWG	Green	37	H	H	2	2	Green	2	1	1	1	1	1
1/0	1/0 AWG	Pink	42	E	A	2	2	Pink	4	1	1	1	1	1
2/0	2/0 AWG	Black	45	E	A	3	2			1	1	1	1	1
3/0	3/0 AWG	Orange	50	A	C	3	2			2	1	1	1	1
4/0	4/0 AWG	Purple	54	A	B	3	2			2	1	1	1	1
250	250kcmil	Yellow	62	A	A	3	2			2	1	1	1	1
300	300kcmil	White	66							2	2	1	1	2
350	350kcmil	Red	71							2	2	1	1	2
400	400kcmil	Blue	76							2	2	1	1	2
500	500kcmil	Brown	87							2	2	1	1	2
600	600kcmil	Green	94							2	2	1	1	2
700	700kcmil	Pink	99							3	2	1	1	2
750	750kcmil	Black	106							3	2	1	1	2
1000	1000kcmil	White	125								2	1	1	2

UL Listed and CSA Certified when installed with tools and dies shown above

- a) Number of crimps shown on chart must be on each end of the CT splicer connectors.
- b) The CT connectors are marked with color, the die numbers and required number of crimps for ILSCO hydraulic tools. When using other listed tools, consult chart for crimps required. Crimps should be evenly spaced on connector.
- c) The ILSCO 94285, MT-25 and all dieless tools are not color coded or do not contain the die index.
- d) For long barrel (CTL) connectors add one additional crimp to each side of barrel.

ILSCO TOOLS - Tooling Information

WARNING! Do Not Use with Aluminum Wire

Hydraulic Tools

Lug Size	Fine Strand Wire Size	Approved Wire Classes	Color Code	Die Index	Manual Hand Tools					Hydraulic Tools					
					94285			ILC-10-N		IDT-6, IDT-6H 6.2 Ton Dieless, IDTB-6 6.2 Ton Dieless Battery	ILC-12-N, ILC-12H-N, ILC-12, ILC-12H, ILC-14, ILC-14H 12 Ton, ILCB-12-N, ILCB-12 12 Ton Battery	IDT-12-N 15 Ton Dieless	IDT-12H, IDTB-12 11 Ton Dieless	ILC-15H 15 Ton, ILC-30H 30 Ton	ILC-750
					Left Die	Right Die	Crimps	Index	Crimps						
8	8	G,H,I,K,M,DLO	Red	21				Red	1		1			1	1
4	6	G,H,I,K,M,DLO	Gray	29				Blue	2		1			1	1
3	4	G,H,I,K,M,DLO	White	29	K	K	2	Gray	2	1	1	1	1	1	1
1	2	G,H,I,K,M,DLO	Green	37	H	H	2	Green	2	1	1	1	1	1	1
1/0	1	G,H,I,K,M,DLO	Pink	42	H	H	2	Pink	4	1	1	1	1	1	1
2/0	1/0	G,H,I,K,M,DLO	Black	45	E	A	3			1	1	1	1	1	1
3/0	2/0	G,H,I,K,M,DLO	Orange	50	E	A	3			1	1	1	1	1	1
4/0	3/0	G,H,I,K,M,DLO	Purple	54	A	B	3			1	1	1	1	1	1
250	4/0	G,H,I,K,M,DLO	Yellow	62	A	B	3			1	1	1	1	1	1
300	250	G,H	White	66						1	2	1	1	2	2
350	250	I,K,M	Red	71						1	2	1	1	2	2
350	262	DLO	Red	71						1	2	1	1	2	2
400	300	G,H,I,K,M	Blue	76						2	2	1	1	2	2
400	313	DLO	Blue	76						2	2	1	1	2	2
500	350	G,H,I,K,M	Brown	87						2	2	1	1	2	2
500	373	DLO	Brown	87						2	2	1	1	2	2
600	400	G,H,I,K,M	Green	94						2	2	1	1	2	2
600	444	DLO	Green	94						2	2	1	1	2	2
700	500	G,H,I,K,M	Pink	99						3	2	1	1	2	2
700	535	DLO	Pink	99						3	2	1	1	2	2
750	600	G,H,I,M	Black	106						3	2	1	1	2	2
750	646	DLO	Black	106						3	2	1	1	2	2
1000	750	G,H,I	White	125							3	1	1	3	
1000	777	DLO	White	125							3	1	1	3	

UL Listed and CSA Certified when installed with tools and dies shown above

- a) Connectors are marked with color, die numbers and required number of crimps for ILSCO hydraulic tools. When using other listed tools, consult chart for crimps required. Crimps should be evenly spaced on connector.
- b) The ILSCO 94285, MT-25 and all dieless tools are not color coded or do not contain the die index.
- c) Strip Length = Barrel Length + 1/16 Inch
- d) For long barrel connectors double the amount of crimps indicated on chart except for 1000kcmil add only one additional crimp.

ILSCO TOOLS - Tooling Information

WARNING! Do Not Use with Aluminum Wire

Hydraulic Tools

Lug Size	Fine Strand Wire Size	Approved Wire Classes	Color Code	Die Index	Manual Hand Tools					Hydraulic Tools				
					94285			ILC-10-N		IDT-6, IDT-6H 6.2 Ton Dieless, IDTB-6 6.2 Ton Dieless Battery	ILC-12-N, ILC-12H-N, ILC-12, ILC-12H, ILC-14, ILC-14H 12 Ton, ILCB-12-N, ILCB-12 12 Ton Battery	IDT-12-N 15 Ton Dieless	IDT-12, IDT-12H, IDTB-12 11 Ton Dieless	ILC-15H 15 Ton, ILC-30H 30 Ton
					Left Die	Right Die	Crimps	Index	Crimps					
8	8	G,H,I,K,M,DLO	Red	21	M	K	2	Red	1		1			1
4	6	G,H,I,K,M,DLO	Gray	29	K	K	2	Blue	2		1			1
3	4	G,H,I,K,M,DLO	White	29	K	K	2	Gray	2	1	1	1	1	1
1	2	G,H,I,K,M,DLO	Green	37	H	H	2	Green	2	1	1	1	1	1
1/0	1	G,H,I,K,M,DLO	Pink	42	H	H	2	Pink	4	1	1	1	1	1
2/0	1/0	G,H,I,K,M,DLO	Black	45	E	A	3			1	1	1	1	1
3/0	2/0	G,H,I,K,M,DLO	Orange	50	E	A	3			2	1	1	1	1
4/0	3/0	G,H,I,K,M,DLO	Purple	54	A	B	3			2	1	1	1	1
250	4/0	G,H,I,K,M,DLO	Yellow	62	A	B	3			2	1	1	1	1
300	250	G,H	White	66						2	2	1	1	2
350	250	I,K,M	Red	71						2	2	1	1	2
350	262	DLO	Red	71						2	2	1	1	2
400	300	G,H,I,K,M	Blue	76						2	2	1	1	2
400	313	DLO	Blue	76						2	2	1	1	2
500	350	G,H,I,K,M	Brown	87						2	2	1	1	2
500	373	DLO	Brown	87						2	2	1	1	2
600	400	G,H,I,K,M	Green	94						2	2	1	1	2
600	444	DLO	Green	94						2	2	1	1	2
700	500	G,H,I,K,M	Pink	99						3	3	1	1	3
700	535	DLO	Pink	99						3	3	1	1	3
750	600	G,H,I,M	Black	106						3	3	1	1	3
750	646	DLO	Black	106						3	3	1	1	3
1000	750	G,H,I	White	125							3	1	1	3
1000	777	DLO	White	125							3	1	1	3

UL Listed and CSA Certified when installed with tools and dies shown above

- a) Number of crimps shown on chart must be on each end of the CT splicer connectors.
- b) The CT connectors are marked with color, the die numbers and required number of crimps for ILSCO hydraulic tools. When using other listed tools, consult chart for crimps required. Crimps should be evenly spaced on connector.
- c) The ILSCO 94285, MT-25 and all dieless tools are not color coded or do not contain the die index.
- d) For long barrel (CTL) connectors add one additional crimp to each side of barrel.

COMPETITOR'S TOOLS - Tooling Information

WARNING! Do Not Use with Aluminum Wire

Lug Size	Class B/C Wire Size	Anderson		Burdly							T&B				Greenlee						
		VC6-FT, VC6-FTR, VC6-FT-BP, VC7-FT, VC7-FTR Dieless		Y1MR, Y1MRTC		PAT81KFT, Y81KFT, Y81KFTMBH Dieless		‡ Y644M, PAT644 Dieless	Y35, Y35BH, Y39, Y750, Y750BH, PAT750		Y46, Y46C Requires Die Adaptor		TBM25S		13100A, TBM14M, TBM14BSCR		K111		HK06FT, RK06FT, EK06FT Dieless		1990 Dieless
		Crimps	Index	Crimps	Crimps	Crimps	Die Part	Crimps	Die Part	Crimps	Index	Crimps	Die Part	Crimps	Index	Crimps	Crimps	Crimps			
8	8 AWG	1	Red	1	1		U8CRT	1	U8CRT	1	Red	1	15520	1	Red	1					
6	6 AWG	1	Blue	1	1		U5CRT	1	U5CRT	1	Blue	1	15522	1	Blue	2	1				
4	4 AWG	1	Gray	2	1	1	U4CRT	1	U4CRT	1	Gray	2	15527-CK	1	Gray	2	1	1			
3	3 AWG	1	White	2	1	1	U3CRT	1	U3CRT	1					Gray	2	1	1			
2	2 AWG	1	Brown	2	1	1	U2CRT	1	U2CRT	1	Brown	2	15528	1	Brown	2	1	1			
1	1 AWG	1			1	1	U1CRT-1	1	U1CRT-1	1			15513-CK	1	Green	2	1	1			
1/0	1/0 AWG	1			1	1	U25RT	1	U25RT	1			15508	1	Pink	4	1	1			
2/0	2/0 AWG	1			1	1	U26RT	1	U26RT	1			15526	1			1	1			
3/0	3/0 AWG	1			1	1	U27RT	1	U27RT	1			15530	1			2	1			
4/0	4/0 AWG	1			1	1	U28RT	1	U28RT	1			15511	1			2	1			
250	250kcmil	2			2	1	U29RT	1	U29RT	1			15510-CK	1			2	1			
300	300kcmil	2			2	1	U30RT	2	U30RT	2			15534	2			2	1			
350	350kcmil	3*			2	1	U31RT	2	U31RT	2			15514-CK	2			2	1			
400	400kcmil	3*			2	1	U32RT	2	U32RT	2			15512	2			2	1			
500	500kcmil	3*			2	1	U34RT	2	U34RT	2			15506	2			2	1			
600	600kcmil	4*			2	1	U36RT	2	U36RT	2			15536-CK	2			2	1			
700	700kcmil	4*			3	1	U38RT	2	U38RT	2			15505	2			3	1			
750	750kcmil	4*			3	1	U39RT	2	U39RT	2			15515-CK	2			3	1			
1000	1000kcmil				3	1			P44RT	3			15504	2				1			

Dieless* - Crimps will overlap

UL Listed and CSA Certified when installed with tools and dies shown above

- a) Connectors are marked with color, die numbers and required number of crimps for ILSCO hydraulic tools. When using other listed tools, consult chart for crimps required. Crimps should be evenly spaced on connector.
- b) The ILSCO 94285, MT-25 and all dieless tools are not color coded or do not contain the die index.
- c) Consult manufacturers data for catalog numbers of dies for each tool.
- d) Strip Length = Barrel Length + 1/16 Inch
- e) For long barrel connectors double the amount of crimps indicated on chart except for 1000kcmil add only one additional crimp.

‡ Allows expanded wire range to be used.

COMPETITOR'S TOOLS - Tooling Information

WARNING! Do Not Use with Aluminum Wire

Lug Size	Fine Strand Wire Size	Approved Wire Classes	Anderson		Burdny						T&B				Greenlee							
			VC6-FT, VC6-FTR, VC6-FT-BP, VC7-FT, VC7-FTR Dieless		Y1MR, Y1MRTC		PAT81KFT, Y81KFT, Y81KFTMBH Dieless		‡ Y644M, PAT644 Dieless	Y35, Y35BH, Y39, Y750, Y750BH, PAT750		Y46, Y46C Requires Die Adaptor		TBM25S		13100A, TBM14M, TBM14BSCR		K111		HK06FT, RK06FT, EK06FT Dieless		1990 Dieless
			Crimps	Index	Crimps	Crimps	Crimps	Die Part	Crimps	Die Part	Crimps	Index	Crimps	Die Part	Crimps	Index	Crimps	Crimps	Crimps	Crimps		
8	8	G,H,I,K,M,DLO	1	Red	1	1		U8CRT	1	U8CRT	1	Red	1	15520	1	Red	1					
4	6	G,H,I,K,M,DLO	1	Blue	2	1		U5CRT	1	U5CRT	1	Blue	2	15522	1	Blue	2					
3	4	G,H,I,K,M,DLO	1	Gray	2	1	1	U4CRT	1	U4CRT	1	Gray	2	15528	1	Gray	2	1	1			
1	2	G,H,I,K,M,DLO	1	Brown	2	1	1	U2CRT	1	U2CRT	1	Brown	3	15513-CK	1	Green	2	1	1			
1/0	1	G,H,I,K,M,DLO	1			1	1	U1CRT-1	1	U1CRT-1	1			15508	1	Pink	4	1	1			
2/0	1/0	G,H,I,K,M,DLO	1			1	1	U25RT	1	U25RT	1			15526	1			1	1			
3/0	2/0	G,H,I,K,M,DLO	2			2	1	U26RT	1	U26RT	1			15530	1			1	1			
4/0	3/0	G,H,I,K,M,DLO	2			2	1	U27RT	1	U27RT	1			15511	1			1	1			
250	4/0	G,H,I,K,M,DLO	2			2	1	U28RT	1	U28RT	1			15510-CK	2			1	1			
300	250	G,H	2			2	1	U29RT	2	U29RT	2			15534	2			1	1			
350	250	I,K,M	3*			2	1	U30RT	2	U30RT	2				2			1	1			
350	262	DLO	3*			2	1		2		2				2			1	1			
400	300	G,H,I,K,M	3*			2	1	U31RT	2	U31RT	2			15514-CK	2			2	1			
400	313	DLO	3*			2	1		2		2				2			2	1			
500	350	G,H,I,K,M	3*			2	1	U32RT	2	U32RT	2			15512	2			2	1			
500	373	DLO	3*			2	1		2		2			15517	2			2	1			
600	400	G,H,I,K,M	4*			2	1	U34RT	2	U34RT	2			15536-CK	2			2	1			
600	444	DLO	4*			2	1		2		2				2			2	1			
700	500	G,H,I,K,M	4*			3	1	U38XRT	2	U38XRT	2			15505	2			3	1			
700	535	DLO	4*			3	1		2		2				2			3	1			
750	600	G,H,I,M	4*			3	1	U39RT	2	U39RT	2			15515-CK	2			3	1			
750	646	DLO	4*			3	1		2		2				2			3	1			
1000	750	G,H,I				3	1			U44XRT	3			15504	3				1			
1000	777	DLO				3	1				3				3				1			

Dieless* - Crimps will overlap

UL Listed and CSA Certified when installed with tools and dies shown above

- a) Connectors are marked with color, die numbers and required number of crimps for ILSCO hydraulic tools. When using other listed tools, consult chart for crimps required. Crimps should be evenly spaced on connector.
- b) The ILSCO 94285, MT-25 and all dieless tools are not color coded or do not contain the die index.
- c) Strip Length = Barrel Length + 1/16 Inch
- d) For long barrel connectors double the amount of crimps indicated on chart except for 1000kcmil add only one additional crimp.

‡ Allows expanded wire range to be used.

